

Anti-H3F3A antibody



Catalog Number: 100517

Product name

Anti-H3F3A antibody

Specificity

Human H3F3A

Antibody description

Rabbit polyclonal to H3F3A

Preparation

Produced in rabbits immunized with a synthetic peptide corresponding to the N-terminus of the human H3F3A, and purified by antigen affinity chromatography.

Formulation

0.2 µm filtered solution in PBS

Storage

This antibody can be stored at 2°C-8°C for one month without detectable loss of activity. Antibody products are stable for twelve months from date of receipt when stored at -20°C to -80°C.

Preservative-Free.

Sodium azide is recommended to avoid contamination (final concentration 0.05%-0.1%). It is toxic to cells and should be disposed of properly. Avoid repeated freeze-thaw cycles.

Clonality

Polyclonal

Ig Type

Rabbit IgG

Applications

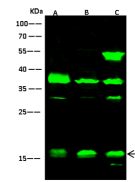
WB, IP

Dilutions

WB: 1-10 µg/ml

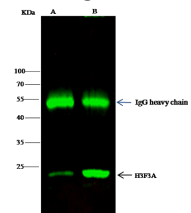
IP: 1-4 µg/mg of lysate

Validations



Lanes	A	B	C
Items			
Sample (whole cell lysate)	Hela	Jurkat	A431
Sample Volume (µg/lane)	30	30	30
Gel	13% SDS-PAGE reducing gel		
Recommended Concentration	1-10 µg/ml		
Secondary Antibody	Dylight 800-labeled Antibody To Rabbit IgG (H+L), at 1:5000 dilution.		
Developed using Odyssey imaging system.			
Explanation	Predicted band size: 15 kDa Observed band size: 15 kDa Additional bands at: 55 kDa, 37 kDa, 31 kDa and 14 kDa (We are unsure as to the identity of these extra bands. They are possible non-specific bindings).		

H3F3A Antibody, Rabbit PAb, Antigen Affinity



Items	A	B
Sample (whole cell lysate)	Jurkat	K562
Sample quantity	0.5 mg	
IP antibody quantity	2 µg	
Protein G agarose	15 µl of 50% Protein G Agarose	
Gel	13% SDS-PAGE reducing gel	
Primary antibody	KLE1-SMACC-SIN0A315 antibody at 10 µg/ml	
Secondary antibody	Dylight 800-labeled antibody to rabbit IgG (H+L), at 1:5000 dilution.	

Purified, Western blot

H3F3A Antibody, Rabbit PAb, Antigen Affinity Purified, Immunoprecipitation

Immunochemical staining of human GALE in human placenta with rabbit polyclonal antibody (0.5 µg/mL, formalin-fixed paraffin embedded sections).