

Anti-Carboxypeptidase B2/CPB2 antibody



Catalog Number: 100512

Product name

Anti-Carboxypeptidase B2/CPB2 antibody

Immunogen

[Human Carboxypeptidase B2/CPB2 \(His Tag\) recombinant protein](#)

Specificity

Human Carboxypeptidase B2 / CPB2

Antibody description

Rabbit polyclonal to Carboxypeptidase B2/CPB2

Preparation

Produced in rabbits immunized with purified, recombinant Human Carboxypeptidase B2 / CPB2 (rh Carboxypeptidase B2 / CPB2; NP_001863.2; Met1-Val423). Carboxypeptidase B2 / CPB2 specific IgG was purified by Human Carboxypeptidase B2 / CPB2 affinity chromatography.

Formulation

0.2 µm filtered solution in PBS with 5% trehalose

Storage

This antibody can be stored at 2°C-8°C for one month without detectable loss of activity. Antibody products are stable for twelve months from date of receipt when stored at -20°C to -80°C. Preservative-Free. Sodium azide is recommended to avoid contamination (final concentration 0.05%-0.1%). It

is toxic to cells and should be disposed of properly. Avoid repeated freeze-thaw cycles.

Clonality

Polyclonal

Ig Type

Rabbit IgG

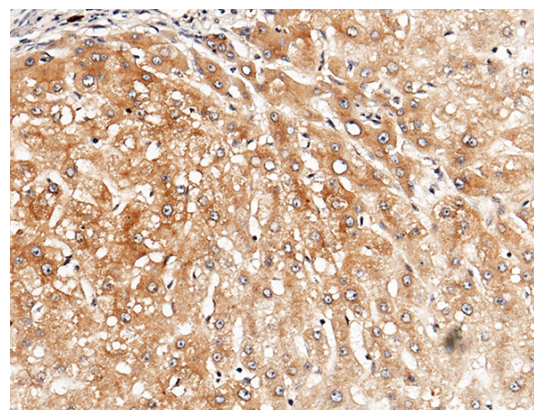
Applications

IHC-P

Dilutions

IHC-P: 0.1-2 µg/mL

Validations



Carboxypeptidase B2 / CPB2 Antibody, Rabbit PAb, Antigen Affinity Purified, Immunohistochemistry

Immunochemical staining of human CPB2 in human liver with rabbit polyclonal antibody (1 µg/mL, formalin-fixed paraffin embedded sections).