

Anti-sialate O-acetylerase antibody



Catalog Number: 100499

Product name

Anti-sialate O-acetylerase antibody

Immunogen

[Human sialate O-acetylerase \(His Tag\) recombinant protein](#)

Specificity

Human SIAE / AIS6

Antibody description

Rabbit polyclonal to sialate O-acetylerase

Preparation

Produced in rabbits immunized with purified, recombinant Human SIAE / AIS6 (rh SIAE / AIS6; Q9HAT2-1; Met1-Lys523). SIAE / AIS6 specific IgG was purified by Human SIAE / AIS6 affinity chromatography.

Formulation

0.2 µm filtered solution in PBS with 5% trehalose

Storage

This antibody can be stored at 2°C-8°C for one month without detectable loss of activity. Antibody products are stable for twelve months from date of receipt when stored at -20°C to -80°C.

Preservative-Free.

Sodium azide is recommended to avoid contamination (final concentration 0.05%-0.1%). It is toxic to cells and should be disposed of properly. Avoid repeated freeze-thaw cycles.

Clonality

Polyclonal

Ig Type

Rabbit IgG

Applications

ELISA, IHC-P

Dilutions

ELISA: 0.1-0.2 µg/mL

This antibody can be used at 0.1-0.2 µg/mL with the appropriate secondary reagents to detect Human SIAE / AIS6. The detection limit for Human SIAE / AIS6 is approximately 0.00975 ng/well.

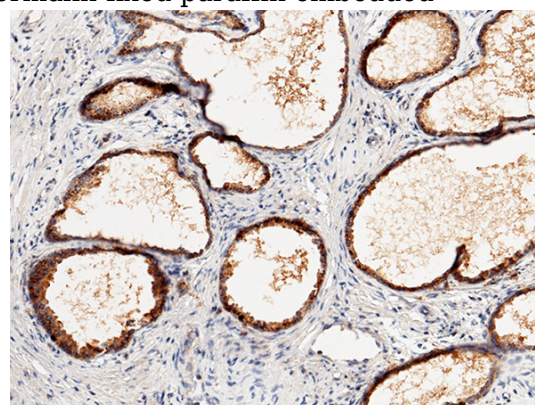
IHC-P: 0.1-2 µg/mL

Validations



sialate O-acetylerase / SIAE Antibody, Rabbit PAb, Antigen Affinity Purified, Immunohistochemistry

Immunochemical staining of human SIAE in human colon with rabbit polyclonal antibody (1 µg/mL, formalin-fixed paraffin embedded



sections).

Anti-sialate O-acetylerase antibody



Catalog Number: 100499

sialate O-acetylerase / SIAE Antibody, Rabbit
PAb, Antigen Affinity Purified,
Immunohistochemistry

Immunochemical staining of human SIAE in
human prostate with rabbit polyclonal antibody (1
 $\mu\text{g/mL}$, formalin-fixed paraffin embedded
sections).