

Anti-CD207/Langerin antibody



Catalog Number: 100494

Product name

Anti-CD207/Langerin antibody

Specificity

human cd207

Antibody description

Rabbit polyclonal to CD207/Langerin

Preparation

Produced in rabbits immunized with A synthetic peptide corresponding to the N-terminus of the human cd207, and purified by antigen affinity chromatography.

Formulation

0.2 µm filtered solution in PBS

Storage

This antibody can be stored at 2°C-8°C for one month without detectable loss of activity. Antibody products are stable for twelve months from date of receipt when stored at -20°C to -80°C.

Preservative-Free.

Sodium azide is recommended to avoid contamination (final concentration 0.05%-0.1%). It is toxic to cells and should be disposed of properly. Avoid repeated freeze-thaw cycles.

Clonality

Polyclonal

Ig Type

Rabbit IgG

Applications

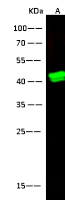
WB, IP

Dilutions

WB: 1-10 µg/ml

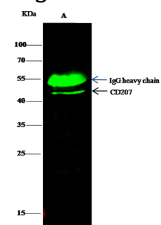
IP: 1-4 µg/mg of lysate

Validations



| Lanes | |
|---------------------------|---|
| Items | A |
| Sample (Membrane lysate) | 293T |
| Sample Volume (µg/lane) | 30 |
| Gel | 13% SDS-PAGE reducing gel |
| Recommended concentration | 1-10 µg/ml |
| Secondary Antibody | Dylight 800-labeled Antibody to Rabbit IgG (H+L), at 1:5000 dilution. |
| Developed | using Odyssey imaging system. |
| Explanation | Predicted band size : 36 kDa Observed band size : 42 kDa |

cd207 Antibody, Rabbit PAb, Antigen Affinity



| Lanes | |
|----------------------------|---|
| Items | A |
| Sample (whole cell lysate) | 293T |
| Sample quantity | 0.5 mg |
| IP antibody quantity | 2 µg |
| Protein G agarose | 15 µl of 50% Protein G Agarose |
| Gel | 13% SDS-PAGE reducing gel |
| Primary antibody | K121-SMCC-sinoA14 antibody at 5 µg/ml |
| Secondary antibody | Dylight 800-labeled antibody to rabbit IgG (H+L), at 1:5000 dilution. |

Purified, Western blot

cd207 Antibody, Rabbit PAb, Antigen Affinity

Purified, Immunoprecipitation