

Anti-EpCAM/TROP-1/TACSTD1 antibody



Catalog Number: 100480

Product name

Anti-EpCAM/TROP-1/TACSTD1 antibody

Immunogen

[Cynomolgus EpCAM/TROP-1/TACSTD1 recombinant protein](#)

Specificity

Cynomolgus EpCAM / TROP-1 / TACSTD1

Antibody description

Rabbit polyclonal to EpCAM/TROP-1/TACSTD1

Preparation

Produced in rabbits immunized with purified, recombinant Cynomolgus EpCAM / TROP-1 / TACSTD1 (rh EpCAM / TROP-1 / TACSTD1; EHH55554.1; Met1-Lys265). EpCAM / TROP-1 / TACSTD1 specific IgG was purified by Cynomolgus EpCAM / TROP-1 / TACSTD1 affinity chromatography.

Formulation

0.2 μ m filtered solution in PBS

Storage

This antibody can be stored at 2°C-8°C for one month without detectable loss of activity. Antibody products are stable for twelve months from date of receipt when stored at -20°C to -80°C.

Preservative-Free.

Sodium azide is recommended to avoid contamination (final concentration 0.05%-0.1%). It is toxic to cells and should be disposed of properly. Avoid repeated freeze-thaw cycles.

Clonality

Polyclonal

Ig Type

Rabbit IgG

Applications

ELISA, WB, IHC-P, IP

Dilutions

WB: 5-10 μ g/ml

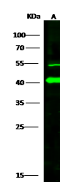
ELISA: 0.1-0.2 μ g/mL

This antibody can be used at 0.1-0.2 μ g/mL with the appropriate secondary reagents to detect Cynomolgus EpCAM / TROP-1 / TACSTD1. The detection limit for Cynomolgus EpCAM / TROP-1 / TACSTD1 is < 0.039 ng/well.

IHC-P: 0.1-1 μ g/ml

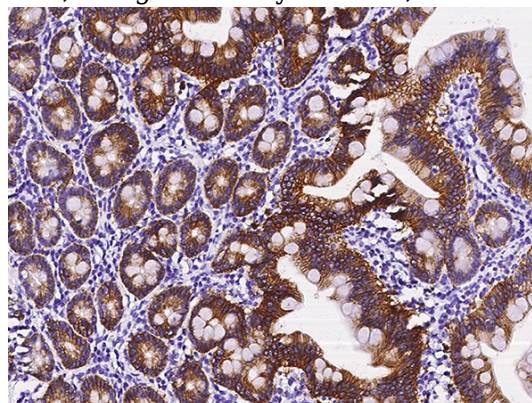
IP: 1-4 μ g/mg of lysate

Validations



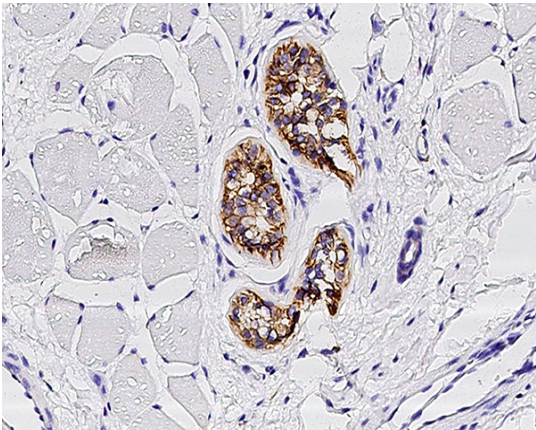
Lanes	A
Items	
Sample (whole cell lysate)	HepG2
Sample Volume (μg/lane)	30
Gel	13% SDS-PAGE, reducing gel
Recommended Concentration	5-10 μg/ml
Secondary Antibody	Dylight 800 labeled Antibody to Rabbit IgG (1:1,000 dilution)
Developed using Odyssey imaging system.	
Predicted band size: 35 kDa	
Observed band size: 40 kDa	
Additional bands at ~55 kDa (We are unsure as to the identity of these extra bands. They are possible non-specific bindings).	

EpCAM / TROP-1 / TACSTD1 Antibody, Rabbit PAb, Antigen Affinity Purified, Western blot



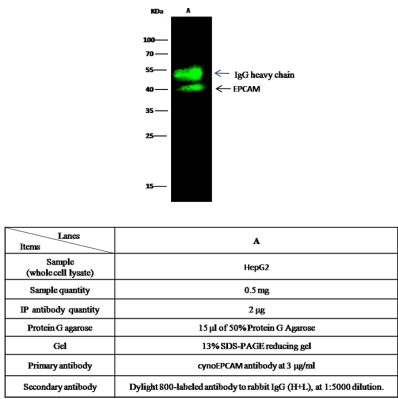
Catalog Number: 100480

EpCAM / TROP-1 / TACSTD1 Antibody, Rabbit
PAb, Antigen Affinity Purified,
Immunohistochemistry



EpCAM / TROP-1 / TACSTD1 Antibody, Rabbit

PAb, Antigen Affinity Purified,
Immunohistochemistry



EpCAM / TROP-1 / TACSTD1 Antibody, Rabbit
PAb, Antigen Affinity Purified,
Immunoprecipitation