

Anti-FABP6/ILBP/I-BABP antibody



Catalog Number: 100472

Product name

FCM, IF, ICC/IF

Anti-FABP6/ILBP/I-BABP antibody

Dilutions

Immunogen

FCM: 0.5-2 µg/Test

[Human FABP6/ILBP/I-BABP recombinant protein](#)

ICC/IF: 10-25 µg/mL

Specificity

Validations

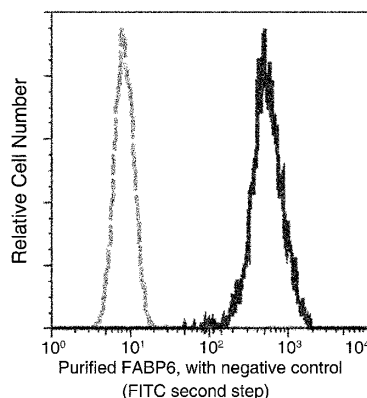
Human FABP6 / ILBP / I-BABP

Antibody description

Rabbit monoclonal to FABP6/ILBP/I-BABP

Preparation

This antibody was obtained from a rabbit immunized with purified, recombinant Human FABP6 / ILBP / I-BABP (rh FABP6 / ILBP / I-BABP; AAH22489.1; Met1-Ala128).



FABP6 / ILBP / I-BABP Antibody, Rabbit MAb

Formulation

0.2 µm filtered solution in PBS

Storage

This antibody can be stored at 2°C-8°C for one month without detectable loss of activity. Antibody products are stable for twelve months from date of receipt when stored at -20°C to -80°C.

Preservative-Free.

Sodium azide is recommended to avoid contamination (final concentration 0.05%-0.1%). It is toxic to cells and should be disposed of properly. Avoid repeated freeze-thaw cycles.

Clonality

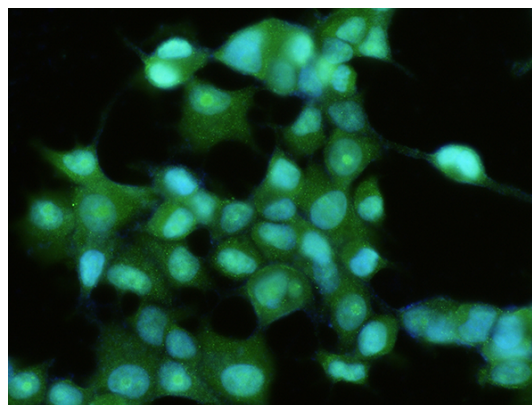
Monoclonal

Ig Type

Rabbit IgG

Applications

Flow cytometric analysis of Human FABP6 expression on MCF-7 cells. The cells were treated according to manufacturer's manual (BD Pharmingen™ Cat. No. 554714), stained with purified anti-Human FABP6, then a FITC-conjugated second step antibody. The fluorescence histograms were derived from gated events with the forward and side light-scatter characteristics of intact cells.



FABP6 / ILBP / I-BABP Antibody, Rabbit MAb, Immunofluorescence

Immunofluorescence staining of Human FABP6 in

Anti-FABP6/ILBP/I-BABP antibody



Catalog Number: 100472

MCF7 cells. Cells were fixed with 4% PFA, permeabilized with 0.3% Triton X-100 in PBS, blocked with 10% serum, and incubated with rabbit anti-Human FABP6 monoclonal antibody (15 µg/ml) at 37°C 1 hour. Then cells were stained

with the Alexa Fluor® 488-conjugated Goat Anti-rabbit IgG secondary antibody (green) and counterstained with DAPI (blue). Positive staining was localized to cytoplasm.