

Anti-MAP2 antibody



Catalog Number: 100449

Product name

Anti-MAP2 antibody

Immunogen

[Mouse MAP2 \(His Tag\) recombinant protein](#)

Specificity

Mouse MAP2

Antibody description

Rabbit monoclonal to MAP2

Preparation

This antibody was obtained from a rabbit immunized with purified, recombinant Mouse MAP2 (rM MAP2; O08663; Ala2-Tyr478).

Formulation

0.2 µm filtered solution in PBS

Storage

This antibody can be stored at 2°C-8°C for one month without detectable loss of activity. Antibody products are stable for twelve months from date of receipt when stored at -20°C to -80°C.

Preservative-Free.

Sodium azide is recommended to avoid contamination (final concentration 0.05%-0.1%). It is toxic to cells and should be disposed of properly. Avoid repeated freeze-thaw cycles.

Clonality

Monoclonal

Ig Type

Rabbit IgG

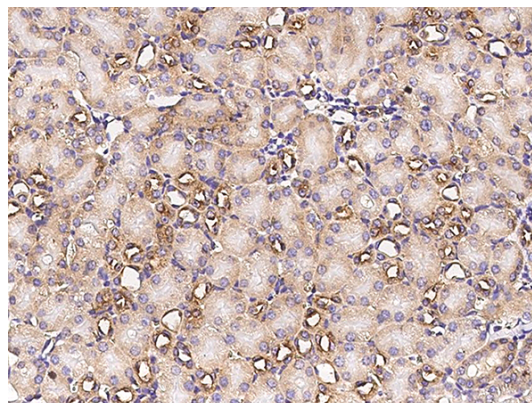
Applications

IHC-P

Dilutions

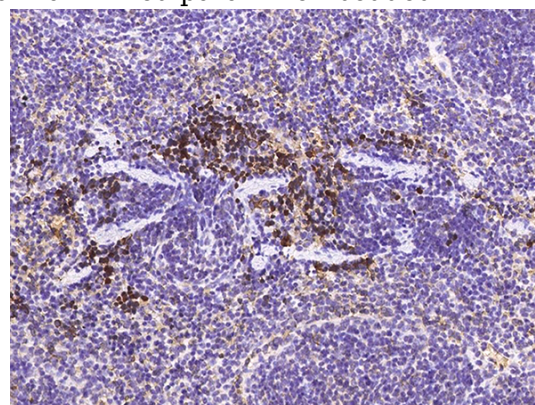
IHC-P: 1-10 µg/mL

Validations



MAP2 Antibody, Rabbit MAb,
Immunohistochemistry

Immunochemical staining of mouse METAP2 in mouse kidney with rabbit monoclonal antibody (1 µg/mL, formalin-fixed paraffin embedded



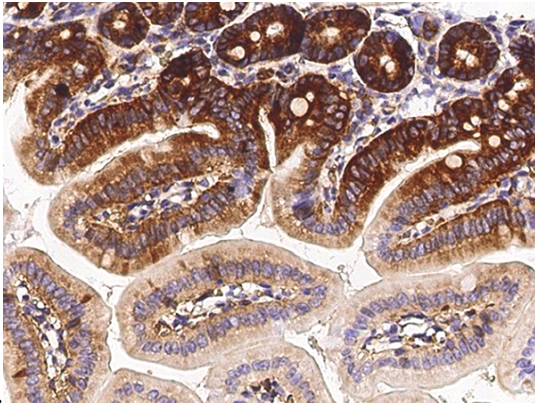
sections).

MAP2 Antibody, Rabbit MAb,
Immunohistochemistry

Immunochemical staining of mouse METAP2 in mouse spleen with rabbit monoclonal antibody (1 µg/mL, formalin-fixed paraffin embedded

Anti-MAP2 antibody

Catalog Number: 100449



MAP2 Antibody, Rabbit MAb,
Immunohistochemistry

Immunochemical staining of mouse METAP2 in mouse intestine with rabbit monoclonal antibody (1 $\mu\text{g}/\text{mL}$, formalin-fixed paraffin embedded sections).

sections).