

Anti-DCUN1D1 / SCCRO antibody



Catalog Number: 100440

Product name

Anti-DCUN1D1 / SCCRO antibody

Immunogen

[Human DCUN1D1 / SCCRO \(His Tag\) recombinant protein](#)

Specificity

Human DCUN1D1 / SCCRO

Antibody description

Rabbit polyclonal to DCUN1D1 / SCCRO

Preparation

Produced in rabbits immunized with purified, recombinant Human DCUN1D1 / SCCRO (rh DCUN1D1 / SCCRO; NP_065691.2; Met1-Val259). DCUN1D1 / SCCRO specific IgG was purified by Human DCUN1D1 / SCCRO affinity chromatography.

Formulation

0.2 µm filtered solution in PBS

Storage

This antibody can be stored at 2°C-8°C for one month without detectable loss of activity. Antibody products are stable for twelve months from date of receipt when stored at -20°C to -80°C.

Preservative-Free.

Sodium azide is recommended to avoid contamination (final concentration 0.05%-0.1%). It is toxic to cells and should be disposed of properly. Avoid repeated freeze-thaw cycles.

Clonality

Polyclonal

Ig Type

Rabbit IgG

Applications

ELISA, WB, IP

Dilutions

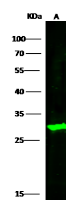
WB: 5-10 µg/ml

ELISA: 0.1-0.2 µg/mL

This antibody can be used at 0.1-0.2 µg/mL with the appropriate secondary reagents to detect Human DCUN1D1 / SCCRO. The detection limit for Human DCUN1D1 / SCCRO is < 0.039 ng/well.

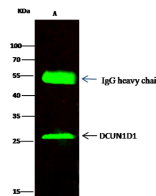
IP: 1-4 µg/mg of lysate

Validations



Lanes	A
Sample (whole cell lysate)	HepG2
Sample Volume (µg/lane)	30
Gel	13% SDS-PAGE reducing gel
Recommended Concentration	5-10 µg/ml
Secondary Antibody	Dylight 800 labeled Antibody to Rabbit IgG (H+L), at 1:5000 dilution. Developed using Odyssey imaging system.
Explanation	Predicted band size : 30 kDa Observed band size : 30 kDa

DCUN1D1 / SCCRO Antibody, Rabbit PAb, Antigen Affinity Purified, Western blot



Lanes	A
Sample (whole cell lysate)	HepG2
Sample quantity	0.5 mg
IP antibody quantity	2 µg
Protein G agarose	15 µl of 50% Protein G Agarose
Gel	13% SDS-PAGE reducing gel
Primary antibody	DCUN1D1 antibody at 5 µg/ml
Secondary antibody	Dylight 800-labeled antibody to rabbit IgG (H+L), at 1:5000 dilution.

DCUN1D1 / SCCRO Antibody, Rabbit PAb, Antigen Affinity Purified, Immunoprecipitation