

Anti-MAP2 antibody



Catalog Number: 100335

Product name

Anti-MAP2 antibody

Immunogen

[Mouse MAP2 \(His Tag\) recombinant protein](#)

Specificity

Mouse METAP2 / MAP2

Antibody description

Rabbit polyclonal to MAP2

Preparation

Produced in rabbits immunized with purified, recombinant Mouse METAP2 / MAP2 (rM METAP2 / MAP2; O08663; Ala2-Tyr478). METAP2 / MAP2 specific IgG was purified by Mouse METAP2 / MAP2 affinity chromatography.

Formulation

0.2 μ m filtered solution in PBS with 5% trehalose

Storage

This antibody can be stored at 2°C-8°C for one month without detectable loss of activity. Antibody products are stable for twelve months from date of receipt when stored at -20°C to -80°C.

Preservative-Free.

Sodium azide is recommended to avoid contamination (final concentration 0.05%-0.1%). It is toxic to cells and should be disposed of properly. Avoid repeated freeze-thaw cycles.

Clonality

Polyclonal

Ig Type

Rabbit IgG

Applications

ELISA, WB, IHC-P, IP

Dilutions

WB: 5-10 μ g/mL

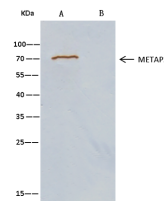
ELISA: 0.1-0.2 μ g/mL

This antibody can be used at 0.1-0.2 μ g/mL with the appropriate secondary reagents to detect Mouse METAP2 / MAP2. The detection limit for Mouse METAP2 / MAP2 is approximately 0.039 ng/well.

IHC-P: 0.1-2 μ g/mL

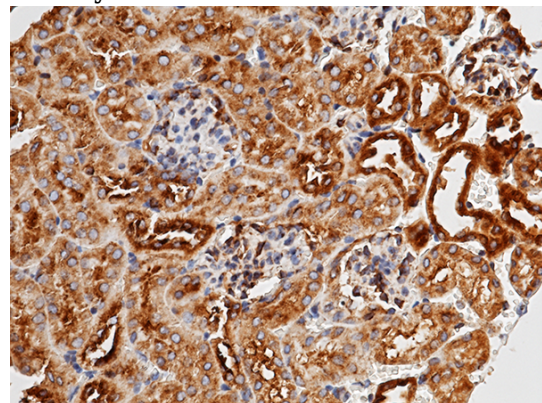
IP: 1-4 μ g/mg of lysate

Validations



Items	Lanes	A	B
Sample (whole cell lysate)	HepG2		
Sample quantity	0.5 mg		
IP antibody type	mMETAP2-His-RP02	Rabbit Blank IgG	
IP antibody quantity	2 μ g		
Protein G agarose	15 μ l of 50% Protein G Agarose		
Gel	13% SDS-PAGE reducing gel		
Primary antibody	mMETAP2-His antibody at 10 μ g/ml [Cat# 50528-RP02]		
Secondary antibody	Clem-Block IP Detection Reagent (HRP) at 1:1000 dilution		

METAP2 / MAP2 Antibody, Rabbit PAb, Antigen Affinity Purified



METAP2 / MAP2 Antibody, Rabbit PAb, Antigen Affinity Purified, Immunohistochemistry

Immunochemical staining of mouse METAP2 in

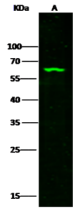
Anti-MAP2 antibody



Catalog Number: 100335

mouse kidney with rabbit polyclonal antibody (1 µg/mL, formalin-fixed paraffin embedded

METAP2 / MAP2 Antibody, Rabbit PAb, Antigen Affinity Purified, Western blot



Items	Lanes	A
Sample (whole cell lysate)		HepG2
Sample Volume (µg/lane)		30
Gel		13% SDS-PAGE reducing gel
Recommended Concentration		5-10 µg/ml
Secondary Antibody		Dylight 800-labeled Antibody To Rabbit IgG (H+L), at 1:5000 dilution.

sections).