

# Anti-Merlin / NF2 antibody



Catalog Number: 100327

## Product name

Anti-Merlin / NF2 antibody

## Specificity

Human NF2

## Antibody description

Rabbit polyclonal to Merlin / NF2

## Preparation

Produced in rabbits immunized with a synthetic peptide corresponding to the center region of the human NF2, and purified by antigen affinity chromatography.

## Formulation

0.2 µm filtered solution in PBS

## Storage

This antibody can be stored at 2°C-8°C for one month without detectable loss of activity. Antibody products are stable for twelve months from date of receipt when stored at -20°C to -80°C.

Preservative-Free.

Sodium azide is recommended to avoid contamination (final concentration 0.05%-0.1%). It is toxic to cells and should be disposed of properly. Avoid repeated freeze-thaw cycles.

## Clonality

Polyclonal

## Ig Type

Rabbit IgG

## Applications

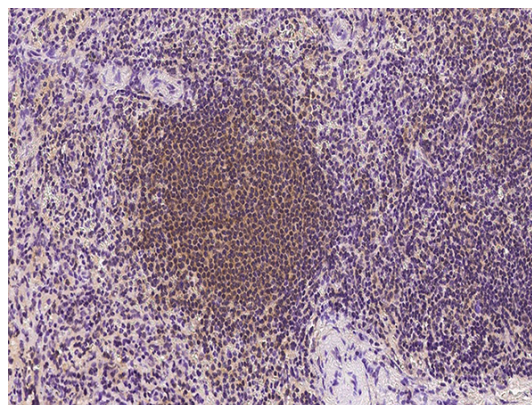
WB, IHC-P

## Dilutions

WB: 10-20 µg/ml

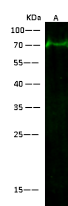
IHC-P: 0.5-5 µg/mL

## Validations



NF2 Antibody, Rabbit PAb, Antigen Affinity Purified

Immunochemical staining of human NF2 in human spleen with rabbit polyclonal antibody (2 µg/mL, formalin-fixed paraffin embedded sections).



Items	Lanes
Sample (whole cell lysate)	A
Sample Volume (µg/lane)	293T
Sample Volume (µg/lane)	30
Gel	13% SDS-PAGE reducing gel
Recommended Concentration	10-20 µg/ml
Secondary Antibody	Dylight 800 labeled Antibody To Rabbit IgG (H+L), at 1:5000 dilution.
Developed using Odyssey imaging system.	
Explanation	Predicted band size : 69 kDa Observed band size : 70 kDa

NF2 Antibody, Rabbit PAb, Antigen Affinity Purified, Western blot