

# Anti-Epcr/PROCR antibody



Catalog Number: 100319

## Product name

Anti-Epcr/PROCR antibody

## Immunogen

[Human Epcr/PROCR \(His Tag\) recombinant protein](#)

## Specificity

Human PROCR

## Antibody description

Rabbit polyclonal to Epcr/PROCR

## Preparation

Produced in rabbits immunized with purified, recombinant Human PROCR (rh PROCR; Q9UNN8; Met1-Thr209). PROCR specific IgG was purified by Human PROCR affinity chromatography.

## Formulation

0.2 µm filtered solution in PBS with 5% trehalose

## Storage

This antibody can be stored at 2°C-8°C for one month without detectable loss of activity. Antibody products are stable for twelve months from date of receipt when stored at -20°C to -80°C. Preservative-Free.

Sodium azide is recommended to avoid contamination (final concentration 0.05%-0.1%). It is toxic to cells and should be disposed of properly. Avoid repeated freeze-thaw cycles.

## Clonality

Polyclonal

## Ig Type

Rabbit IgG

## Applications

ELISA, IHC-P

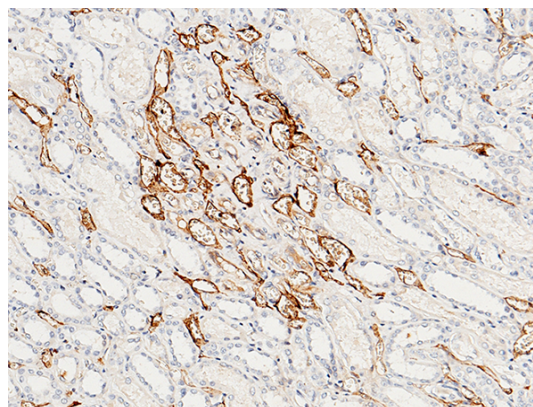
## Dilutions

ELISA: 0.1-0.2 µg/mL

This antibody can be used at 0.1-0.2 µg/mL with the appropriate secondary reagents to detect Human PROCR. The detection limit for Human PROCR is approximately 0.00975 ng/well.

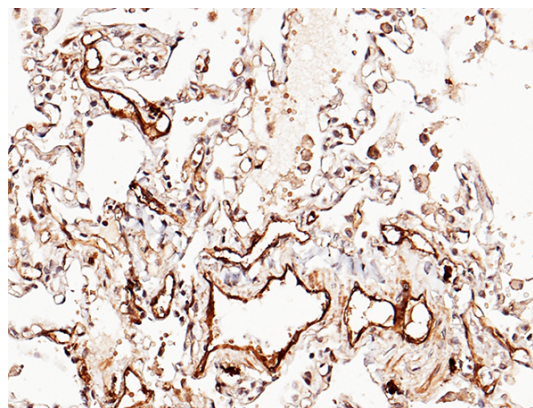
IHC-P: 0.1-2 µg/mL

## Validations



Epcr / PROCR Antibody, Rabbit PAb, Antigen Affinity Purified, Immunohistochemistry

Immunochemical staining of human PROCR in human kidney with rabbit polyclonal antibody (1 µg/mL, formalin-fixed paraffin embedded sections). Positive staining was localized to endothelial cells.



# Anti-Epcr/PROCR antibody



Catalog Number: 100319

---

Epcr / PROCR Antibody, Rabbit PAb, Antigen  
Affinity Purified, Immunohistochemistry

Immunochemical staining of human PROCR in

human lung with rabbit polyclonal antibody (1  
μg/mL, formalin-fixed paraffin embedded  
sections). Positive staining was localized to  
endothelial cells.