

# Anti-CCR6 antibody



Catalog Number: 100308

## Product name

Anti-CCR6 antibody

## Specificity

Human CCR6

## Antibody description

Rabbit polyclonal to CCR6

## Preparation

Produced in rabbits immunized with a synthetic peptide corresponding to the center region of the Human CCR6, and purified by antigen affinity chromatography.

## Formulation

0.2 µm filtered solution in PBS

## Storage

This antibody can be stored at 2°C-8°C for one month without detectable loss of activity. Antibody products are stable for twelve months from date of receipt when stored at -20°C to -80°C.

Preservative-Free.

Sodium azide is recommended to avoid contamination (final concentration 0.05%-0.1%). It is toxic to cells and should be disposed of

properly. Avoid repeated freeze-thaw cycles.

## Clonality

Polyclonal

## Ig Type

Rabbit IgG

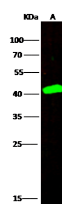
## Applications

WB

## Dilutions

WB: 1-5 µg/ml

## Validations



Lanes	A
Items	
Sample (whole cell lysate)	MCF7
Sample Volume (µg/lane)	30
Gel	13% SDS-PAGE reducing gel
Recommended Concentration	1.5 µg/ml
Secondary Antibody	Dylight 800 labeled Antibody to Rabbit IgG (1:1), at 1:5000 dilution. Developed using Odyssey imaging system.
Explanation	Predicted band size : 42 kDa Observed band size : 42 kDa

CCR6 Antibody, Rabbit PAb, Antigen Affinity Purified, Western blot