

Anti-E-tag antibody



Catalog Number: 100291

Product name

Anti-E-tag antibody

Specificity

Recognize N-terminal and C-terminal E tag in fusion proteins

Antibody description

Rabbit Polyclonal to E-tag

Preparation

Produced in rabbits immunized with A synthetic peptide corresponding to the E-tag sequence (GAPVPYPDPLEPR), and purified by antigen affinity chromatography.

Formulation

0.2 μ m filtered solution in PBS

Storage

This antibody can be stored at 2°C-8°C for one month without detectable loss of activity. Antibody products are stable for twelve months from date of receipt when stored at -20°C to -80°C.

Preservative-Free.

Sodium azide is recommended to avoid contamination (final concentration 0.05%-0.1%). It is toxic to cells and should be disposed of properly. Avoid repeated freeze-thaw cycles.

Clonality

Polyclonal

Ig Type

Rabbit IgG

Applications

WB, ICC/IF, IP

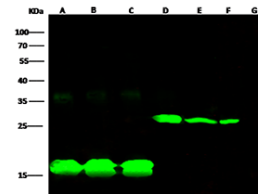
Dilutions

WB: 0.1-5 μ g/ml

ICC/IF: 0.1-1.0 μ g/mL

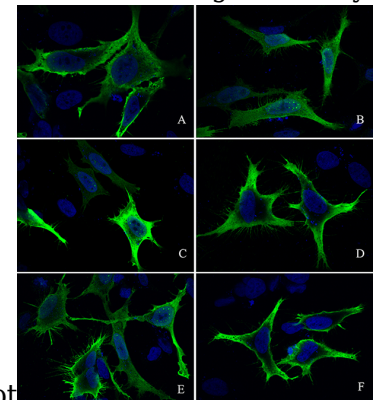
IP: 0.5-2 μ g/mg of lysate

Validations



Lanes	A	B	C	D	F	E	G
Items	Etag-GFERh(C) transfected 293 cell lysate	his-Etag-GFER(C) transfected 293 cell lysate	his-GFER-Etag(C) transfected 293 cell lysate	Etag-GSTT2h(C) transfected 293 cell lysate	his-GSTT2-Etag(C) transfected 293 cell lysate	his-Etag-GSTT2(C) transfected 293 cell lysate	Negative control
Sample Volume (μ g/Lane)	2	2	2	10	10	20	10
Gel	13% SDS-PAGE reducing gel						
Recommended Concentration	0.5-5 μ g/ml						
Secondary Antibody	Dylight 800 labeled Antibody to Rabbit IgG (H+L), at 1:5000 dilution.						
	Developed using Odyssey imaging system.						

Anti-E-tag Antibody, Rabbit Pab, Antigen Affinity



Purified Western Blot

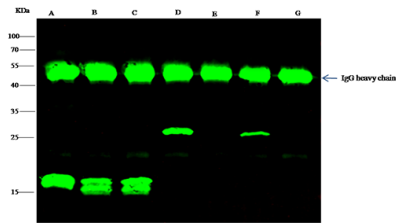
Anti-E-tag Antibody, Rabbit Pab, Antigen Affinity Purified, Immunohistochemistry

Immunofluorescence staining of E-Tag in HeLa cells, transfected with pSTEP2-Etag-GFERh (Figure A), pSTEP2-his-Etag-GFER (Figure B), pSTEP2-his-GFER-Etag (Figure C), pSTEP2-Etag-GSTT2h (Figure D), pSTEP2-his-Etag-GSTT2 (Figure E) and pSTEP2-his-GSTT2-Etag (Figure F). Cells were fixed with 4% PFA, permeabilized with 0.3% Triton X-100 in PBS, blocked with 10% serum, and incubated with Mouse anti-E-Tag monoclonal antibody at 37°C 1 hour. Then cells were stained with the Alexa Fluor® 488-conjugated Goat Anti-mouse IgG secondary antibody (green) and counterstained with DAPI

Anti-E-tag antibody



Catalog Number: 100291



Anti-E-tag Antibody, Rabbit Pab, Antigen Affinity Purified, Immunoprecipitation

Lanes	A	B	C	D	E	F	G
Sample (whole cell lysate)	E tag-1M-125D-His0	His-E tag-1M-125D0	His-1M-125D-E tag0	E tag-1M-244P-His0	His-E tag-1M-244P0	His-1M-244P-E tag0	pSTEP2
Sample quantity	0.5 mg						
IP antibody quantity	2 µg						
Protein G agarose	15 µl of 50% Protein G Agarose						
Gel	13% SDS-PAGE reducing gel						
Primary antibody	KLH-SMCC-sinoA1292 antibody at 1 µg/ml						
Secondary antibody	Dylight 800-labeled antibody to rabbit IgG (E11), at 1:5000 dilution						

(blue).