

Anti-ATF2 antibody



Catalog Number: 100282

Product name

Anti-ATF2 antibody

Specificity

Human ATF2

Antibody description

Rabbit polyclonal to ATF2

Preparation

Produced in rabbits immunized with a synthetic peptide corresponding to the center region of the Human ATF2, and purified by antigen affinity chromatography.

Formulation

0.2 µm filtered solution in PBS

Storage

This antibody can be stored at 2°C-8°C for one month without detectable loss of activity. Antibody products are stable for twelve months from date of receipt when stored at -20°C to -80°C.

Preservative-Free.

Sodium azide is recommended to avoid contamination (final concentration 0.05%-0.1%). It is toxic to cells and should be disposed of properly. Avoid repeated freeze-thaw cycles.

Clonality

Polyclonal

Ig Type

Rabbit IgG

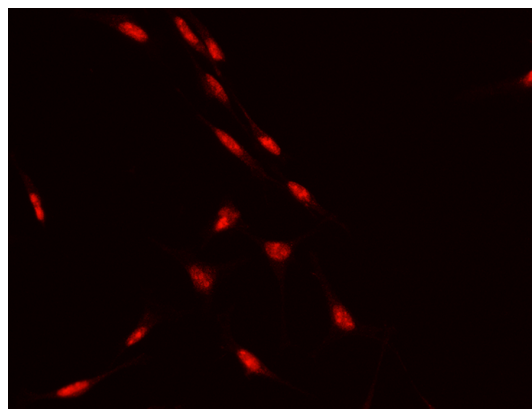
Applications

IF, ICC/IF

Dilutions

ICC/IF: 0.5-1.5 µg/mL

Validations



ATF2 Antibody, Rabbit PAb, Antigen Affinity Purified, Immunofluorescence

Immunofluorescence staining of ATF2 in HeLa cells. Cells were fixed with 4% PFA, permeabilized with 0.3% Triton X-100 in PBS, blocked with 10% serum, and incubated with rabbit anti-human ATF2 polyclonal antibody (1 µg/ml) at 4°C overnight. Then cells were st