

# Anti-EpCAM/TROP-1/TACSTD1 antibody



Catalog Number: 100269

## Product name

Anti-EpCAM/TROP-1/TACSTD1 antibody

## Immunogen

[Rat EpCAM/TROP-1/TACSTD1 \(His Tag\) recombinant protein](#)

## Specificity

Rat EpCAM / TROP-1 / TACSTD1

## Antibody description

Rabbit polyclonal to EpCAM/TROP-1/TACSTD1

## Preparation

Produced in rabbits immunized with purified, recombinant Rat EpCAM / TROP-1 / TACSTD1 (rh EpCAM / TROP-1 / TACSTD1; O55159; Met1-Thr266). EpCAM / TROP-1 / TACSTD1 specific IgG was purified by Rat EpCAM / TROP-1 / TACSTD1 affinity chromatography.

## Formulation

0.2 µm filtered solution in PBS

## Storage

This antibody can be stored at 2°C-8°C for one month without detectable loss of activity. Antibody products are stable for twelve months from date of receipt when stored at -20°C to -80°C.

Preservative-Free.

Sodium azide is recommended to avoid contamination (final concentration 0.05%-0.1%). It is toxic to cells and should be disposed of properly. Avoid repeated freeze-thaw cycles.

## Clonality

Polyclonal

## Ig Type

Rabbit IgG

## Applications

ELISA, IHC-P

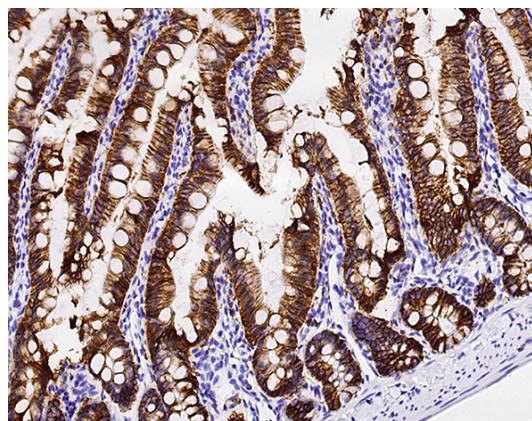
## Dilutions

ELISA:0.1-0.2 µg/mL

This antibody can be used at 0.1-0.2 µg/mL with the appropriate secondary reagents to detect Rat EpCAM / TROP-1 / TACSTD1. The detection limit for Rat EpCAM / TROP-1 / TACSTD1 is < 0.039 ng/well.

IHC-P: 0.05-1 µg/ml

## Validations



EpCAM / TROP-1 / TACSTD1 Antibody, Rabbit PAb, Antigen Affinity Purified, Immunohistochemistry