

Anti-KIAA0101/p15 antibody



Catalog Number: 100251

Product name

Anti-KIAA0101/p15 antibody

Immunogen

[Human KIAA0101/p15 \(His Tag\) recombinant protein](#)

Specificity

Human KIAA0101 / p15

Antibody description

Rabbit polyclonal to KIAA0101/p15

Preparation

Produced in rabbits immunized with purified, recombinant Human KIAA0101 / p15 (rh KIAA0101 / p15; NP_055551.1; Met1-Glu111). KIAA0101 / p15 specific IgG was purified by Human KIAA0101 / p15 affinity chromatography.

Formulation

0.2 µm filtered solution in PBS

Storage

This antibody can be stored at 2°C-8°C for one month without detectable loss of activity. Antibody products are stable for twelve months from date of receipt when stored at -20°C to -80°C.

Preservative-Free.

Sodium azide is recommended to avoid contamination (final concentration 0.05%-0.1%). It is toxic to cells and should be disposed of

properly. Avoid repeated freeze-thaw cycles.

Clonality

Polyclonal

Ig Type

Rabbit IgG

Applications

ELISA, IHC-P

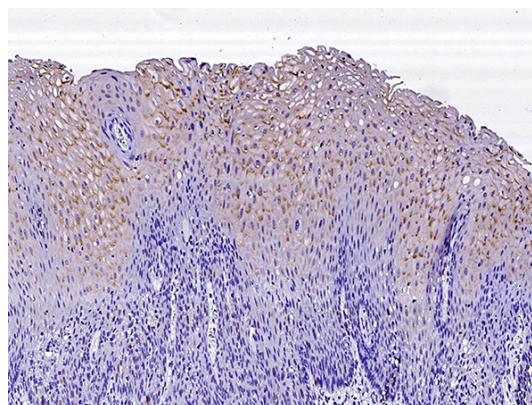
Dilutions

ELISA:0.1-0.2 µg/mL

This antibody can be used at 0.1-0.2 µg/mL with the appropriate secondary reagents to detect Human KIAA0101 / p15. The detection limit for Human KIAA0101 / p15 is < 0.039 ng/well.

IHC-P: 0.1-2 µg/ml

Validations



KIAA0101 / p15 Antibody, Rabbit PAb, Antigen Affinity Purified, Immunohistochemistry