

# Anti-YKL-39/CHI3L2 antibody



Catalog Number: 100242

## Product name

Anti-YKL-39/CHI3L2 antibody

## Immunogen

[Human YKL-39/CHI3L2 \(His Tag\) recombinant protein](#)

## Specificity

Human YKL-39 / CHI3L2

**No cross-reactivity** in ELISA with Human CHIT1; Human CHI3L1

## Antibody description

Rabbit monoclonal to YKL-39/CHI3L2

## Preparation

This antibody was obtained from a rabbit immunized with purified, recombinant Human YKL-39 / CHI3L2 (rh YKL-39 / CHI3L2; NP\_003991.2; Met1-Leu390).

## Formulation

0.2 µm filtered solution in PBS with 5% trehalose

## Storage

This antibody can be stored at 2°C-8°C for one month without detectable loss of activity. Antibody products are stable for twelve months from date of receipt when stored at -20°C to -80°C.

Preservative-Free.

Sodium azide is recommended to avoid contamination (final concentration 0.05%-0.1%). It is toxic to cells and should be disposed of properly. Avoid repeated freeze-thaw cycles.

## Clonality

Monoclonal

## Ig Type

Rabbit IgG

## Applications

ELISA, IHC-P

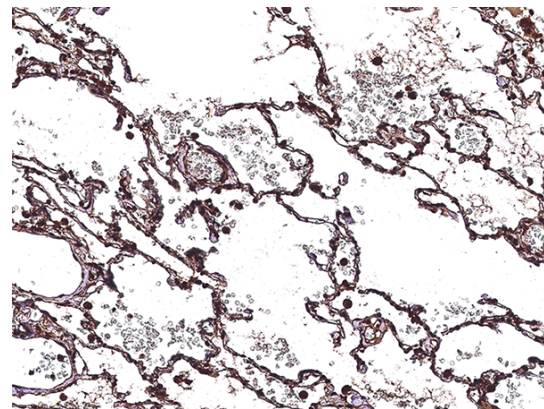
## Dilutions

ELISA: 0.1-0.2 µg/mL

This antibody can be used at 0.1-0.2 µg/mL with the appropriate secondary reagents to detect Human CHI3L2. The detection limit for Human CHI3L2 is approximately 0.0195 ng/well.

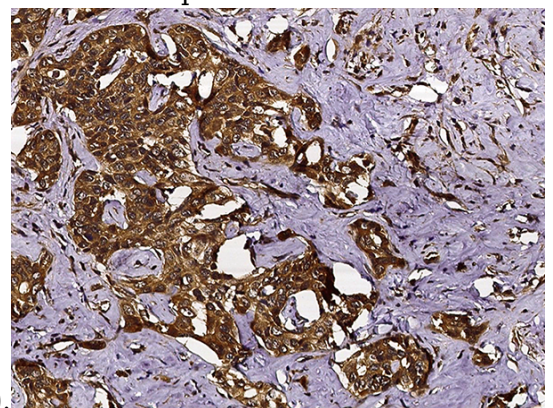
IHC-P: 1-20 µg/mL

## Validations



CHI3L2 / YKL-39 Antibody, Rabbit MAb, Immunochemistry

Immunochemical staining of human CHI3L2 in human lung with rabbit monoclonal antibody (10 µg/mL, formalin-fixed paraffin embedded



sections).

CHI3L2 / YKL-39 Antibody, Rabbit MAb, Immunochemistry

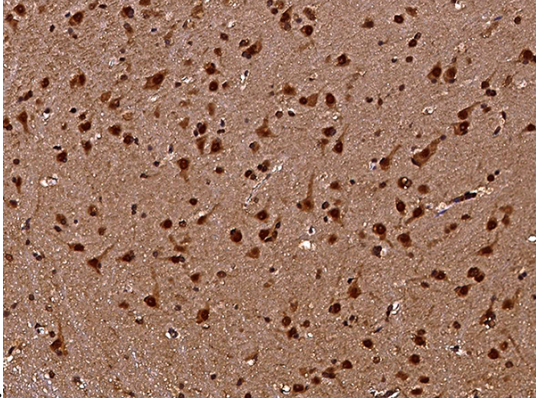
# Anti-YKL-39/CHI3L2 antibody



Catalog Number: 100242

---

Immunochemical staining of human CHI3L2 in human hepatoma with rabbit monoclonal antibody (10  $\mu\text{g}/\text{mL}$ , formalin-fixed paraffin embedded



sections).

CHI3L2 / YKL-39 Antibody, Rabbit MAb, Immunochemistry

Immunochemical staining of human CHI3L2 in human brain with rabbit monoclonal antibody (10  $\mu\text{g}/\text{mL}$ , formalin-fixed paraffin embedded sections).