

# Anti-OLIG1 antibody



Catalog Number: 100241

## Product name

Anti-OLIG1 antibody

## Specificity

Human OLIG1

## Antibody description

Rabbit polyclonal to OLIG1

## Preparation

Produced in rabbits immunized with a synthetic peptide corresponding to the center region of the human OLIG1, and purified by antigen affinity chromatography.

## Formulation

0.2 µm filtered solution in PBS

## Storage

This antibody can be stored at 2°C-8°C for one month without detectable loss of activity. Antibody products are stable for twelve months from date of receipt when stored at -20°C to -80°C.

Preservative-Free.

Sodium azide is recommended to avoid contamination (final concentration 0.05%-0.1%). It is toxic to cells and should be disposed of properly. Avoid repeated freeze-thaw cycles.

## Clonality

Polyclonal

## Ig Type

Rabbit IgG

## Applications

WB, IF, IP, ICC/IF

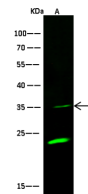
## Dilutions

WB: 10-30 µg/ml

ICC/IF: 0.5-1.5 µg/ml

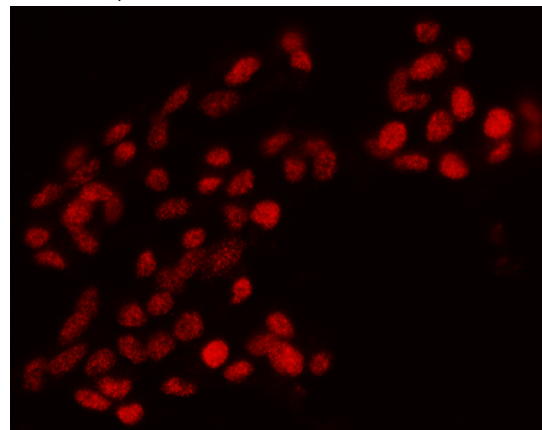
IP: 1-4 µg/mg of lysate

## Validations



Items	Lanes	A
Sample (whole cell lysate)		293T
Sample Volume (µg/lane)		30
Gel		13%SDS-PAGE reducing gel
Recommended Concentration		10-30µg/ml
Secondary Antibody		Dylight 800-labeled Antibody To Rabbit IgG (H+L), at 1:5000 dilution.
Explanation		Developed using Odyssey imaging system. Predicted band size : 27 kDa Observed band size : 35 kDa Additional bands at : 23 kDa (We are unsure as to the identity of these extra bands. They are possible non-specific bindings).

OLIG1 Antibody, Rabbit PAb, Antigen Affinity Purified, Western blot



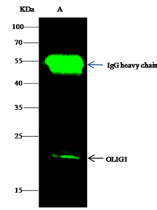
OLIG1 Antibody, Rabbit PAb, Antigen Affinity Purified, Immunofluorescence

Immunofluorescence staining of OLIG1 in SHSY5Y cells. Cells were fixed with 4% PFA, permeabilized with 0.3% Triton X-100 in PBS, blocked with 10% serum, and incubated with rabbit anti-human OLIG1 polyclonal antibody (1 µg/ml) at 4°C overnight. Then cells were stained with the Alexa Fluor® 594-conjugated Goat Anti-rabbit IgG secondary antibody (red). Positive staining was

# Anti-OLIG1 antibody



Catalog Number: 100241



OLIG1 Antibody, Rabbit PAb, Antigen Affinity Purified, Immunoprecipitation

Immunochemical staining of human TROP2 in human prostate with rabbit polyclonal antibody (1  $\mu\text{g}/\text{mL}$ , formalin-fixed paraffin embedded sections).

Item	Lane	A
Sample (whole cell lysate)		Hela
Sample quantity		0.5 mg
IP antibody quantity		2 $\mu\text{g}$
Protein G agarose		15 $\mu\text{l}$ of 50% Protein G Agarose
Gel		13% SDS-PAGE reducing gel
Primary antibody		KLH-SMCC-sinoA577 antibody at 10 $\mu\text{g}/\text{ml}$
Secondary antibody		Dylight 800-labeled antibody to rabbit IgG (H+L), at 1:5000 dilution.

localized to nucleus.