

Anti-Synapsin I / Synapsin-1 antibody



Catalog Number: 100202

Product name

Anti-Synapsin I / Synapsin-1 antibody

Specificity

Human SYN1

Antibody description

Rabbit polyclonal to Synapsin I / Synapsin-1

Preparation

Produced in rabbits immunized with a synthetic peptide corresponding to the C-terminus of the human SYN1, and purified by antigen affinity chromatography.

Formulation

0.2 µm filtered solution in PBS

Storage

This antibody can be stored at 2°C-8°C for one month without detectable loss of activity. Antibody products are stable for twelve months from date of receipt when stored at -20°C to -80°C.

Preservative-Free.

Sodium azide is recommended to avoid contamination (final concentration 0.05%-0.1%). It is toxic to cells and should be disposed of properly. Avoid repeated freeze-thaw cycles.

Clonality

Polyclonal

Ig Type

Rabbit IgG

Applications

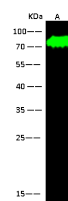
WB, IP

Dilutions

WB: 1-10 µg/ml

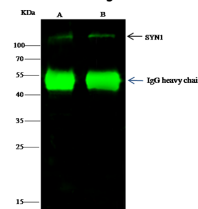
IP: 4-6 µg/mg of lysate

Validations



Items	Lanes	A
Sample		Mouse brain tissue lysate
Sample Volume (µg/lane)		30
Gel		13% SDS-PAGE reducing gel
Recommended Concentration		1-10 µg/ml
Secondary Antibody		Dylight 800-labeled Antibody to Rabbit IgG (H+L), at 1:5000 dilution.
		Developed using Odyssey imaging system.
Explanation		Predicted band size : 74 kDa Observed band size : 74 kDa

Synapsin I / Synapsin-1 Antibody, Rabbit PAb, Antigen Affinity Purified, Western blot



Items	Lanes	A	B
Sample (whole cell lysate)		HeLa	A549
Sample quantity		0.5 mg	
IP antibody quantity		2 µg	
Protein G agarose		15 µl of 50% Protein G Agarose	
Gel		13% SDS-PAGE reducing gel	
Primary antibody		KL1f-SMCC-sinoA435 antibody at 5 µg/ml	
Secondary antibody		Dylight 800-labeled antibody to rabbit IgG (H+L), at 1:5000 dilution.	

Synapsin I / Synapsin-1 Antibody, Rabbit PAb, Antigen Affinity Purified, Immunoprecipitation

Immunochemical staining of human CRELD1 in human kidney with rabbit polyclonal antibody (1 µg/mL, formalin-fixed paraffin embedded sections).