

# Anti-EBOV-VP40 / Matrix protein VP40 antibody



Catalog Number: 100199

## Product name

Anti-EBOV-VP40 / Matrix protein VP40 antibody

## Immunogen

[EBOV EBOV-VP40 / Matrix protein VP40 \(His Tag\)](#)

## Specificity

Ebola virus EBOV (subtype Sudan, strain Gulu) VP40 / Matrix protein VP40

## Antibody description

Rabbit polyclonal to EBOV-VP40 / Matrix protein VP40

## Preparation

Produced in rabbits immunized with purified, recombinant EBOV Ebola virus EBOV (subtype Sudan, strain Gulu) VP40 / Matrix protein VP40 (YP\_138522.1; Val31-Lys326). Ebola virus EBOV (subtype Sudan, strain Gulu) VP40 / Matrix protein VP40 specific IgG was purified by EBOV Ebola virus EBOV (subtype Sudan, strain Gulu) VP40 / Matrix protein VP40 affinity chromatography.

## Formulation

0.2 µm filtered solution in PBS

## Storage

This antibody can be stored at 2°C-8°C for one month without detectable loss of activity. Antibody products are stable for twelve months from date of receipt when stored at -20°C to -80°C. Preservative-Free. Sodium azide is recommended to avoid

contamination (final concentration 0.05%-0.1%). It is toxic to cells and should be disposed of properly. Avoid repeated freeze-thaw cycles.

## Clonality

Polyclonal  
Ig Type

Rabbit IgG

## Applications

ELISA, WB, IHC-P, IP

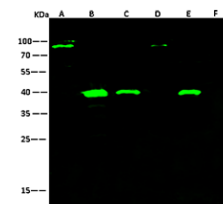
## Dilutions

WB: 0.5-1 µg/ml

ELISA: 0.1-0.2 µg/ml

This antibody can be used at 0.1-0.2 µg/ml with the appropriate secondary reagents to detect Ebola virus EBOV (subtype Sudan, strain Gulu) VP40 / Matrix protein VP40.

## Validations



Items	Lanes	A	B	C	D	E	F
Sample (Recombinant protein)		Ebola virus (Cat#40447-V10E)	Ebola virus (Cat#40447-V07E)	Ebola virus (Cat#40448-V07E)	Ebola virus (Cat#40446-V10E)	Ebola virus (Cat#40446-V07E)	CLIC1 (Cat#15242-H07E)
Sample Volume (ng/lane)		10	10	10	10	10	10
Gel	13% SDS-PAGE reducing gel						
Recommended Concentration	0.5-1 µg/ml						
Secondary Antibody	Dylight 800-labeled Antibody To Rabbit IgG (H+L), at 1:5000 dilution. Developed using Odyssey imaging system.						

Ebola virus EBOV (subtype Sudan, strain Gulu) VP40 / Matrix protein VP40 Antibody, Rabbit PAb, Antigen Affinity Purified, Western blot