

Anti-Bonzo/CXCR6 antibody



Catalog Number: 100196

Product name

Anti-Bonzo/CXCR6 antibody

Specificity

Human CXCR6

Antibody description

Rabbit polyclonal to Bonzo/CXCR6

Preparation

Produced in rabbits immunized with a synthetic peptide corresponding to the center region of the Human CXCR6, and purified by antigen affinity chromatography.

Formulation

0.2 µm filtered solution in PBS

Storage

This antibody can be stored at 2°C-8°C for one month without detectable loss of activity. Antibody products are stable for twelve months from date of receipt when stored at -20°C to -80°C.

Preservative-Free.

Sodium azide is recommended to avoid contamination (final concentration 0.05%-0.1%). It is toxic to cells and should be disposed of properly. Avoid repeated freeze-thaw cycles.

Clonality

Polyclonal

Ig Type

Rabbit IgG

Applications

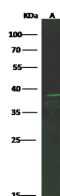
WB, IP

Dilutions

WB: 10-20 µg/ml

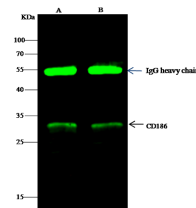
IP: 1-4 µg/mg of lysate

Validations



Lanes	A
Items	
Sample (whole cell lysate)	HEK293
Sample Volume (µg/lane)	30
Gel	13% SDS-PAGE reducing gel
Recommended Concentration	10-20 µg/ml
Secondary Antibody	Dylight 800 labeled Antibody to Rabbit IgG (H+L), at 1:5000 dilution. Developed using Odyssey imaging system.
Explanation	Predicted band size : 39 kDa Observed band size : 39 kDa

CXCR6 Antibody, Rabbit PAb, Antigen Affinity



Lanes	A	B
Items		
Sample (whole cell lysate)	293T	Jurkat
Sample quantity	0.5 mg	
IP antibody quantity	4 µg	
Immunomagnetic beads Protein G	60 µg	
Gel	13% SDS-PAGE reducing gel	
Primary antibody	KJ11-SMCC-SINOMA12 antibody at 10 µg/ml	
Secondary antibody	Dylight 800 labeled antibody to rabbit IgG (H+L), at 1:5000 dilution	

Purified, Western blot

CXCR6 Antibody, Rabbit PAb, Antigen Affinity

Purified, Immunoprecipitation