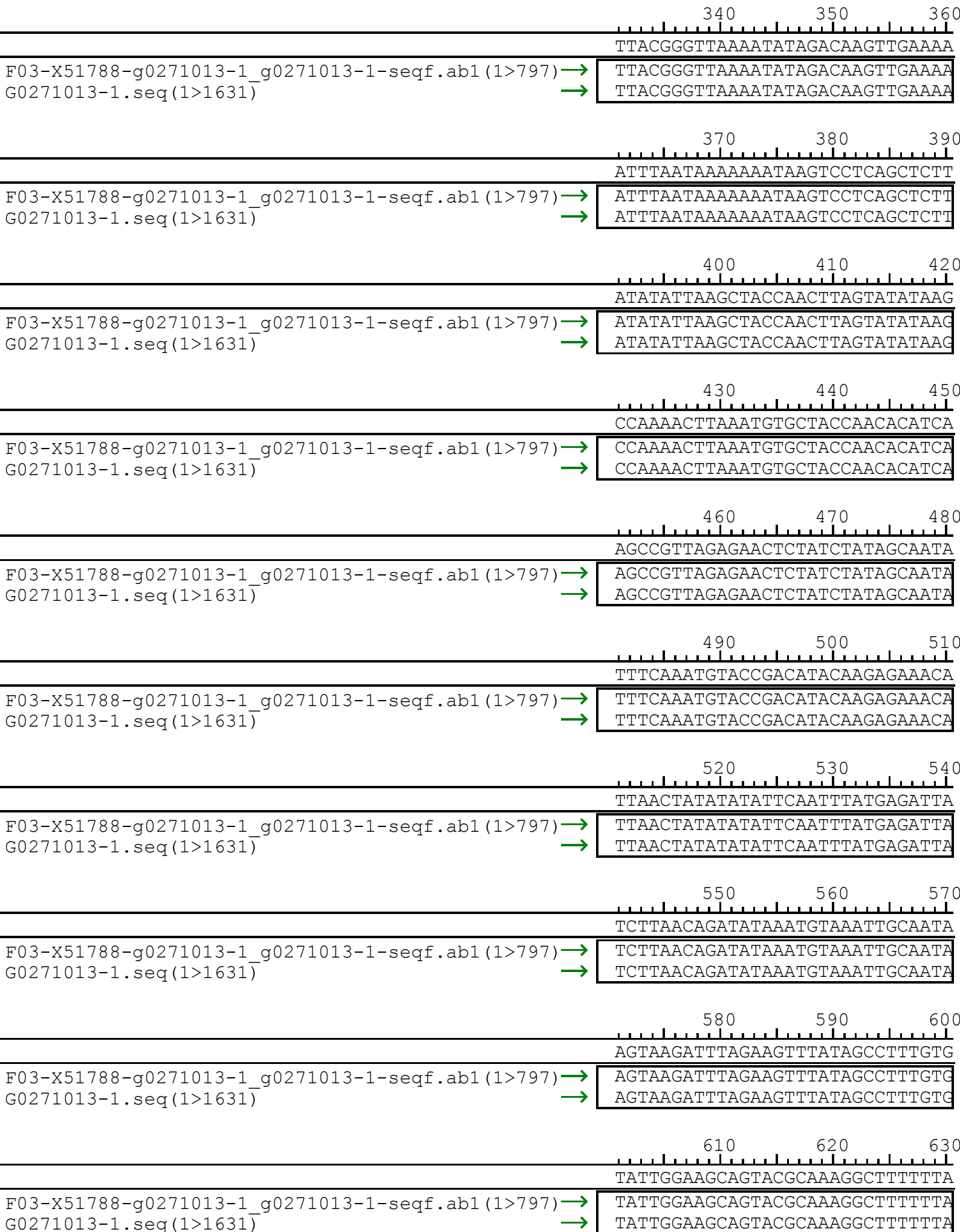
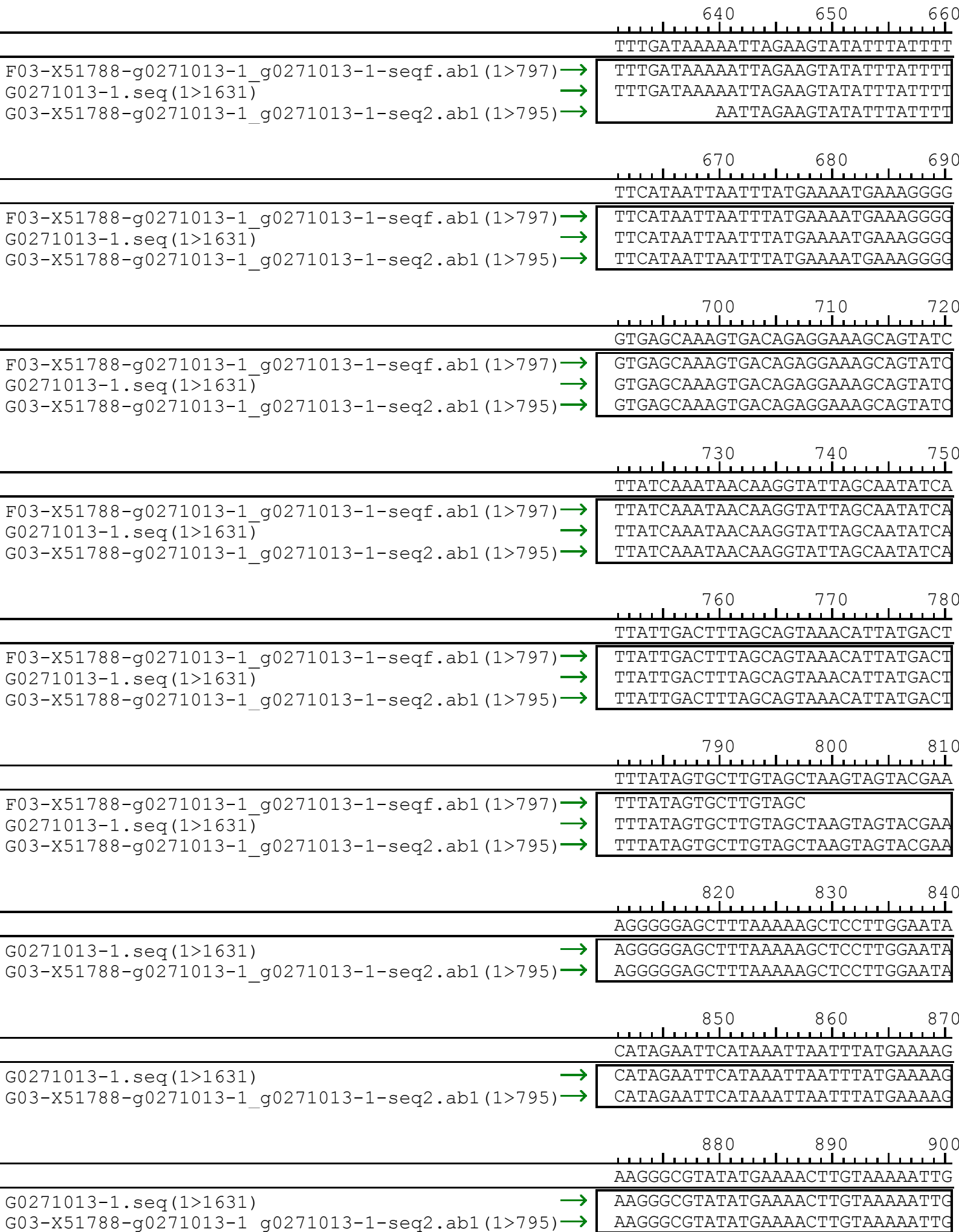
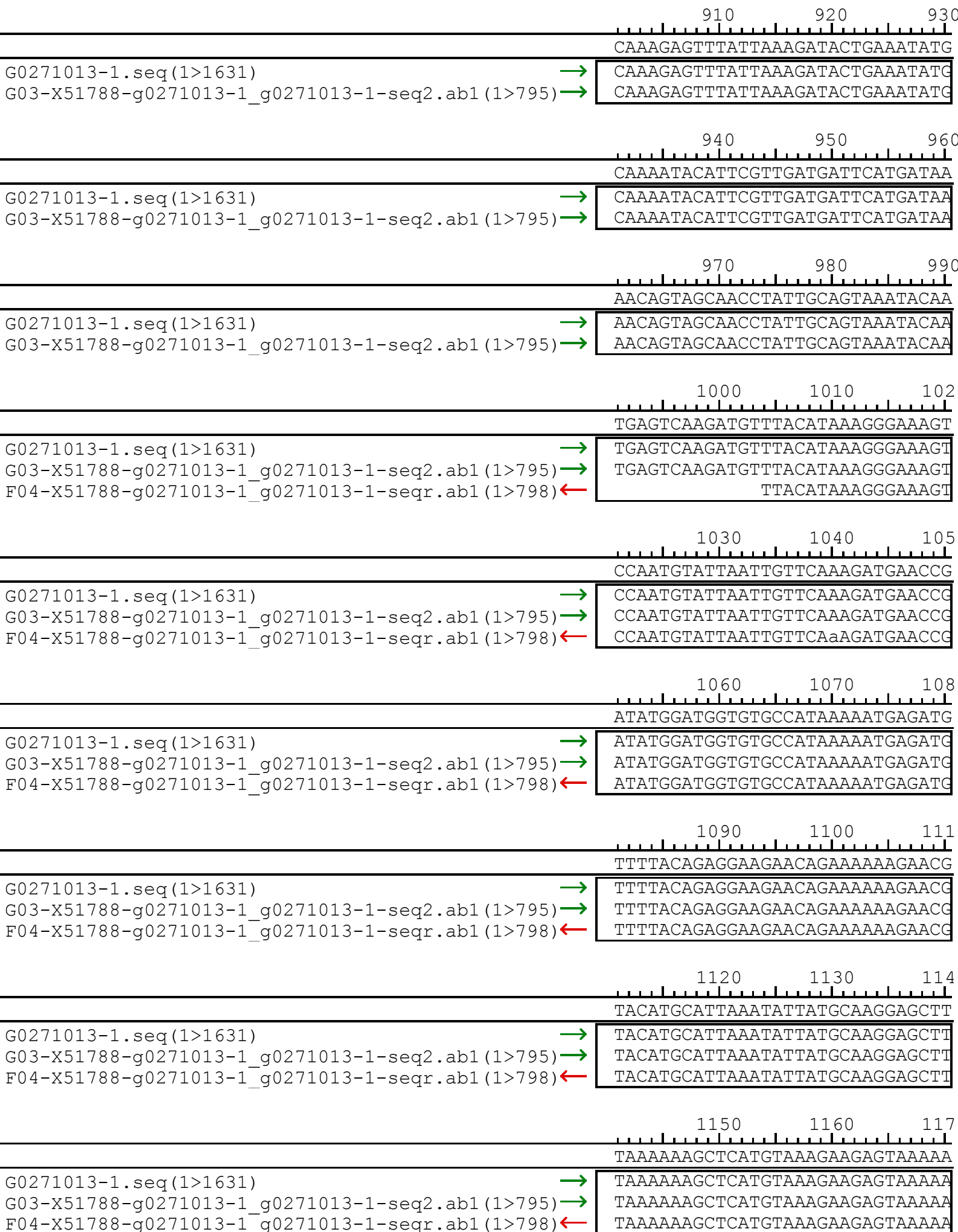


Project: Untitled.SQD Contig 1







1180 1190 1200
GAAAAAATAATTTATTTATTTAATTTAATAT
G0271013-1.seq(1>1631) → GAAAAAATAATTTATTTATTTAATTTAATAT
G03-X51788-g0271013-1_g0271013-1-seq2.ab1(1>795) → GAAAAAATAATTTATTTATTTAATTTAATAT
F04-X51788-g0271013-1_g0271013-1-seqr.ab1(1>798) ← GAAAAAATAATTTATTTATTTAATTTAATAT
G04-X51788-g0271013-1_g0271013-1-seq3.ab1(1>798) →

1210 1220 1230
TGAGAGTGCCGACACAGTATGCACTAAAAA
G0271013-1.seq(1>1631) → TGAGAGTGCCGACACAGTATGCACTAAAAA
G03-X51788-g0271013-1_g0271013-1-seq2.ab1(1>795) → TGAGAGTGCCGACACAGTATGCACTAAAAA
F04-X51788-g0271013-1_g0271013-1-seqr.ab1(1>798) ← TGAGAGTGCCGACACAGTATGCACTAAAAA
G04-X51788-g0271013-1_g0271013-1-seq3.ab1(1>798) →

1240 1250 1260
ATATATCTGTGGTGTAGTGAGCCGATACAA
G0271013-1.seq(1>1631) → ATATATCTGTGGTGTAGTGAGCCGATACAA
G03-X51788-g0271013-1_g0271013-1-seq2.ab1(1>795) → ATATATCTGTGGTGTAGTGAGCCGATACAA
F04-X51788-g0271013-1_g0271013-1-seqr.ab1(1>798) ← ATATATCTGTGGTGTAGTGAGCCGATACAA
G04-X51788-g0271013-1_g0271013-1-seq3.ab1(1>798) →

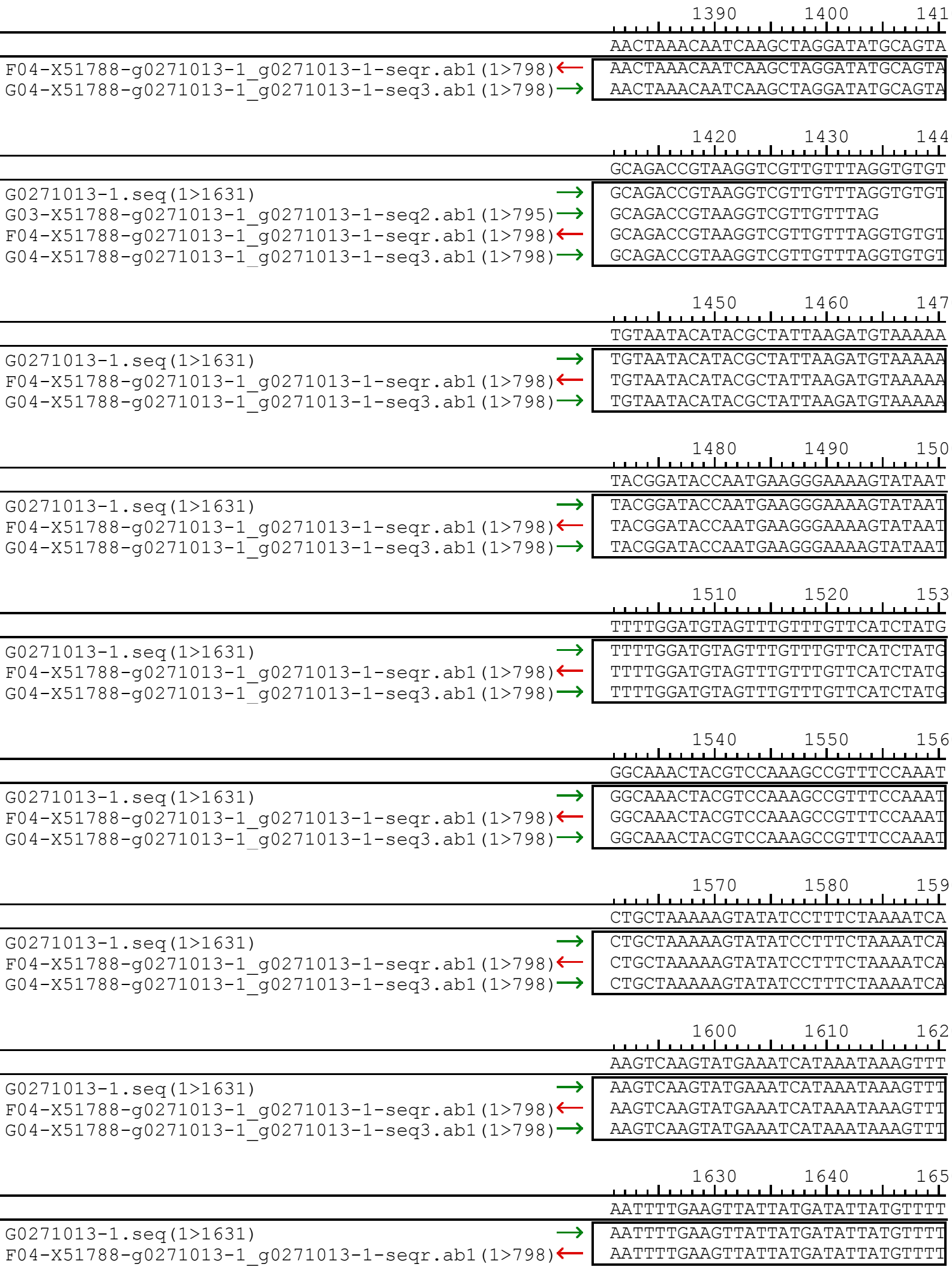
1270 1280 1290
AAGGATAGTCACTCGCATTTTCATAATACA
G0271013-1.seq(1>1631) → AAGGATAGTCACTCGCATTTTCATAATACA
G03-X51788-g0271013-1_g0271013-1-seq2.ab1(1>795) → AAGGATAGTCACTCGCATTTTCATAATACA
F04-X51788-g0271013-1_g0271013-1-seqr.ab1(1>798) ← AAGGATAGTCACTCGCATTTTCATAATACA
G04-X51788-g0271013-1_g0271013-1-seq3.ab1(1>798) →

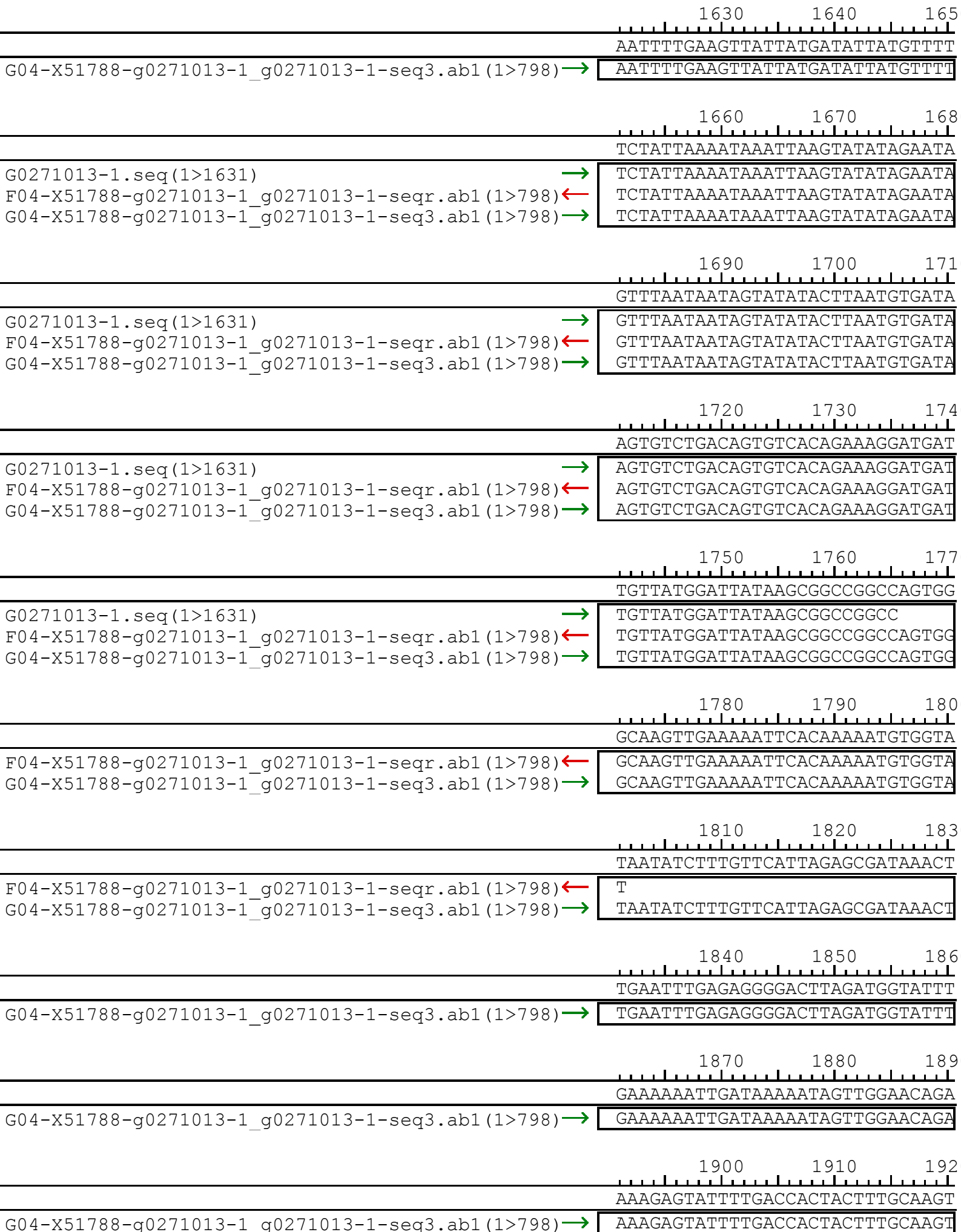
1300 1310 1320
TCTTATGTTATGATTATGTGTCGGTGGGAC
G0271013-1.seq(1>1631) → TCTTATGTTATGATTATGTGTCGGTGGGAC
G03-X51788-g0271013-1_g0271013-1-seq2.ab1(1>795) → TCTTATGTTATGATTATGTGTCGGTGGGAC
F04-X51788-g0271013-1_g0271013-1-seqr.ab1(1>798) ← TCTTATGTTATGATTATGTGTCGGTGGGAC
G04-X51788-g0271013-1_g0271013-1-seq3.ab1(1>798) →

1330 1340 1350
TTCACGACGAAAACCCACAATAAAAAAAGA
G0271013-1.seq(1>1631) → TTCACGACGAAAACCCACAATAAAAAAAGA
G03-X51788-g0271013-1_g0271013-1-seq2.ab1(1>795) → TTCACGACGAAAACCCACAATAAAAAAAGA
F04-X51788-g0271013-1_g0271013-1-seqr.ab1(1>798) ← TTCACGACGAAAACCCACAATAAAAAAAGA
G04-X51788-g0271013-1_g0271013-1-seq3.ab1(1>798) →

1360 1370 1380
GTTCGGGGTAGGGTTAAGCATAGTTGAGGC
G0271013-1.seq(1>1631) → GTTCGGGGTAGGGTTAAGCATAGTTGAGGC
G03-X51788-g0271013-1_g0271013-1-seq2.ab1(1>795) → GTTCGGGGTAGGGTTAAGCATAGTTGAGGC
F04-X51788-g0271013-1_g0271013-1-seqr.ab1(1>798) ← GTTCGGGGTAGGGTTAAGCATAGTTGAGGC
G04-X51788-g0271013-1_g0271013-1-seq3.ab1(1>798) →

1390 1400 1410
AACTAAACAATCAAGCTAGGATATGCAGTA
G0271013-1.seq(1>1631) → AACTAAACAATCAAGCTAGGATATGCAGTA
G03-X51788-g0271013-1_g0271013-1-seq2.ab1(1>795) → AACTAAACAATCAAGCTAGGATATGCAGTA





1930 1940 1950
GTACCTTGTACCTACAGCATGACCGTTAAA
G04-X51788-g0271013-1_g0271013-1-seq3.ab1 (1>798) → GTACCTTGTACCTACAGCATGACCGTTAAA

1960 1970 1980
GTGGATATCACACAAATAAAGGAAAAGGGA
G04-X51788-g0271013-1_g0271013-1-seq3.ab1 (1>798) → GTGGATATCACACAAATAAAGGAAAAGGGA

1990
ATGAAACTATATCCTGC
G04-X51788-g0271013-1_g0271013-1-seq3.ab1 (1>798) → ATGAAACTATATCCTGC