







1780 1790 1800 1810 1820 1830 1840 1850  
AGAGTATCAGTGTGCATGGCTGGATATGTATCACC GCGTCTTTGATCGCGTCAGCGCCGTCGTCGGTGAACAGG  
G0198437-1.seq(1>11850) → AGAGTATCAGTGTGCATGGCTGGATATGTATCACC GCGTCTTTGATCGCGTCAGCGCCGTCGTCGGTGAACAGG

1860 1870 1880 1890 1900 1910 1920  
TATGGAATTTTCGCCGATTTTGCACCTCGCAAGGCATATTGCGCGTTGGCGGTAACAAGAAAGGGATCTTCACT  
G0198437-1.seq(1>11850) → TATGGAATTTTCGCCGATTTTGCACCTCGCAAGGCATATTGCGCGTTGGCGGTAACAAGAAAGGGATCTTCACT

1930 1940 1950 1960 1970 1980 1990  
CGCGACCGCAAACCGAAGTCGGCGGCTTTTCTGCTGCAAAAACGCTGGACTGGCATGAACTTCGGTGAAAAACC  
G0198437-1.seq(1>11850) → CGCGACCGCAAACCGAAGTCGGCGGCTTTTCTGCTGCAAAAACGCTGGACTGGCATGAACTTCGGTGAAAAACC

2000 2010 2020 2030 2040 2050 2060 2070  
GCAGCAGGGAGGCAAACAAGCTAGCCACCACCACCACCACGTTGAATTACAGGTGACCAGCTCGAATTTTC  
G0198437-1.seq(1>11850) → GCAGCAGGGAGGCAAACAAGCTAGCCACCACCACCACCACGTTGAATTACAGGTGACCAGCTCGAATTTTC

2080 2090 2100 2110 2120 2130 2140  
CCCGATCGTTCAAACATTTGGCAATAAAGTTTCTTAAGATTGAATCCTGTTGCCGGTCTTGCGATGATTATCAT  
G0198437-1.seq(1>11850) → CCCGATCGTTCAAACATTTGGCAATAAAGTTTCTTAAGATTGAATCCTGTTGCCGGTCTTGCGATGATTATCAT

2150 2160 2170 2180 2190 2200 2210 2220  
ATAATTTCTGTTGAATTACGTTAAGCATGTAATAATTAACATGTAATGCATGACGTTATTTATGAGATGGGTTT  
G0198437-1.seq(1>11850) → ATAATTTCTGTTGAATTACGTTAAGCATGTAATAATTAACATGTAATGCATGACGTTATTTATGAGATGGGTTT

2230 2240 2250 2260 2270 2280 2290  
TTATGATTAGAGTCCCGCAATTATACATTTAATACGCGATAGAAAACAAAATATAGCGCGCAAACCTAGGATAAA  
G0198437-1.seq(1>11850) → TTATGATTAGAGTCCCGCAATTATACATTTAATACGCGATAGAAAACAAAATATAGCGCGCAAACCTAGGATAAA

2300 2310 2320 2330 2340 2350 2360  
TTATCGCGCGCGGTGTCATCTATGTTACTAGATCGGGAATTAACTATCAGTGTGTTGACAGGATATATTGGCGG  
G0198437-1.seq(1>11850) → TTATCGCGCGCGGTGTCATCTATGTTACTAGATCGGGAATTAACTATCAGTGTGTTGACAGGATATATTGGCGG











4740 4750 4760 4770 4780 4790 4800 4810  
CGGTCGCAAACCATCCGGCCCCGGTACAAATCGGCGCGGCGCTGGGTGATGACCTGGTGGAGAAGTTGAAGGCCG  
G0198437-1.seq(1>11850) → CGGTCGCAAACCATCCGGCCCCGGTACAAATCGGCGCGGCGCTGGGTGATGACCTGGTGGAGAAGTTGAAGGCCG

4820 4830 4840 4850 4860 4870 4880  
CGCAGGCCGCCAGCGGCAACGCATCGAGGCAGAAGCACGCCCCGGTGAATCGTGGCAAGCGGCCGCTGATCGA  
G0198437-1.seq(1>11850) → CGCAGGCCGCCAGCGGCAACGCATCGAGGCAGAAGCACGCCCCGGTGAATCGTGGCAAGCGGCCGCTGATCGA

4890 4900 4910 4920 4930 4940 4950  
ATCCGCAAAGAATCCCGGCAACCGCCGGCAGCCGGTGCGCCGTCGATTAGGAAGCCGCCCAAGGGCGACGAGCA  
G0198437-1.seq(1>11850) → ATCCGCAAAGAATCCCGGCAACCGCCGGCAGCCGGTGCGCCGTCGATTAGGAAGCCGCCCAAGGGCGACGAGCA

4960 4970 4980 4990 5000 5010 5020 5030  
ACCAGATTTTTTCGTTCCGATGCTCTATGACGTGGGCACCCGCGATAGTCGCAGCATCATGGACGTGGCCGTTT  
G0198437-1.seq(1>11850) → ACCAGATTTTTTCGTTCCGATGCTCTATGACGTGGGCACCCGCGATAGTCGCAGCATCATGGACGTGGCCGTTT

5040 5050 5060 5070 5080 5090 5100  
TCCGTCTGTCTGAAGCGTGACCGACGAGCTGGCGAGGTGATCCGCTACGAGCTTCCAGACGGGCACGTAGAGGTT  
G0198437-1.seq(1>11850) → TCCGTCTGTCTGAAGCGTGACCGACGAGCTGGCGAGGTGATCCGCTACGAGCTTCCAGACGGGCACGTAGAGGTT

5110 5120 5130 5140 5150 5160 5170 5180  
TCCGCAGGGCCGGCCGGCATGGCCAGTGTGTGGGATTACGACCTGGTACTGATGGCGGTTTCCCATCTAACCGA  
G0198437-1.seq(1>11850) → TCCGCAGGGCCGGCCGGCATGGCCAGTGTGTGGGATTACGACCTGGTACTGATGGCGGTTTCCCATCTAACCGA

5190 5200 5210 5220 5230 5240 5250  
ATCCATGAACCGATAACCGGAAGGGAAGGGAGACAAGCCCGGCCGCGTGTTCGGTCCACACGTTGCGGACGTAC  
G0198437-1.seq(1>11850) → ATCCATGAACCGATAACCGGAAGGGAAGGGAGACAAGCCCGGCCGCGTGTTCGGTCCACACGTTGCGGACGTAC

5260 5270 5280 5290 5300 5310 5320  
TCAAGTTCTGCCGCGAGCCGATGGCGGAAAGCAGAAAGACGACCTGGTAGAAACCTGCATTCGGTTAAACACC  
G0198437-1.seq(1>11850) → TCAAGTTCTGCCGCGAGCCGATGGCGGAAAGCAGAAAGACGACCTGGTAGAAACCTGCATTCGGTTAAACACC

5330 5340 5350 5360 5370 5380 5390 5400  
ACGCACGTTGCCATGCAGCGTACGAAGAAGGCCAAGAACGGCCGCCTGGTGACGGTATCCGAGGGTGAAGCCTT  
G0198437-1.seq(1>11850) → ACGCACGTTGCCATGCAGCGTACGAAGAAGGCCAAGAACGGCCGCCTGGTGACGGTATCCGAGGGTGAAGCCTT

5410 5420 5430 5440 5450 5460 5470  
GATTAGCCGCTACAAGATCGTAAAGAGCGAAACCGGGCGGCCGGAGTACATCGAGATCGAGCTAGCTGATTGGA  
G0198437-1.seq(1>11850) → GATTAGCCGCTACAAGATCGTAAAGAGCGAAACCGGGCGGCCGGAGTACATCGAGATCGAGCTAGCTGATTGGA

5480 5490 5500 5510 5520 5530 5540 5550  
TGTACCGCGAGATCACAGAAGGCAAGAACCCGGACGTGCTGACGGTTCACCCCGATTACTTTTTGATCGATCCC  
G0198437-1.seq(1>11850) → TGTACCGCGAGATCACAGAAGGCAAGAACCCGGACGTGCTGACGGTTCACCCCGATTACTTTTTGATCGATCCC

5560 5570 5580 5590 5600 5610 5620  
GGCATCGGCCGTTTTCTCTACCGCCTGGCACGCCGCGCCGCAGGCAAGGCAGAAGCCAGATGGTTGTTCAAGAC  
G0198437-1.seq(1>11850) → GGCATCGGCCGTTTTCTCTACCGCCTGGCACGCCGCGCCGCAGGCAAGGCAGAAGCCAGATGGTTGTTCAAGAC

5630 5640 5650 5660 5670 5680 5690  
GATCTACGAACGCAGTGGCAGCGCCGGAGAGTTCAAGAAGTTCTGTTTCACCGTGCGCAAGCTGATCGGGTCAA  
G0198437-1.seq(1>11850) → GATCTACGAACGCAGTGGCAGCGCCGGAGAGTTCAAGAAGTTCTGTTTCACCGTGCGCAAGCTGATCGGGTCAA

5700 5710 5720 5730 5740 5750 5760 5770  
ATGACCTGCCGGAGTACGATTTGAAGGAGGAGGCCGGGGCAGGCTGGCCCGATCCTAGTCATGCGCTACCGCAAC  
G0198437-1.seq(1>11850) → ATGACCTGCCGGAGTACGATTTGAAGGAGGAGGCCGGGGCAGGCTGGCCCGATCCTAGTCATGCGCTACCGCAAC

5780 5790 5800 5810 5820 5830 5840  
CTGATCGAGGGCGAAGCATCCGCCGTTTCTAATGTACGGAGCAGATGCTAGGGCAAATTGCCCTAGCAGGGGA  
G0198437-1.seq(1>11850) → CTGATCGAGGGCGAAGCATCCGCCGTTTCTAATGTACGGAGCAGATGCTAGGGCAAATTGCCCTAGCAGGGGA

5850 5860 5870 5880 5890 5900 5910 5920  
AAAAGGTCGAAAAGGTCTCTTTTCTGTGGATAGCACGTACATTGGGAACCCAAAGCCGTACATTGGGAACCGGA  
G0198437-1.seq(1>11850) → AAAAGGTCGAAAAGGTCTCTTTTCTGTGGATAGCACGTACATTGGGAACCCAAAGCCGTACATTGGGAACCGGA







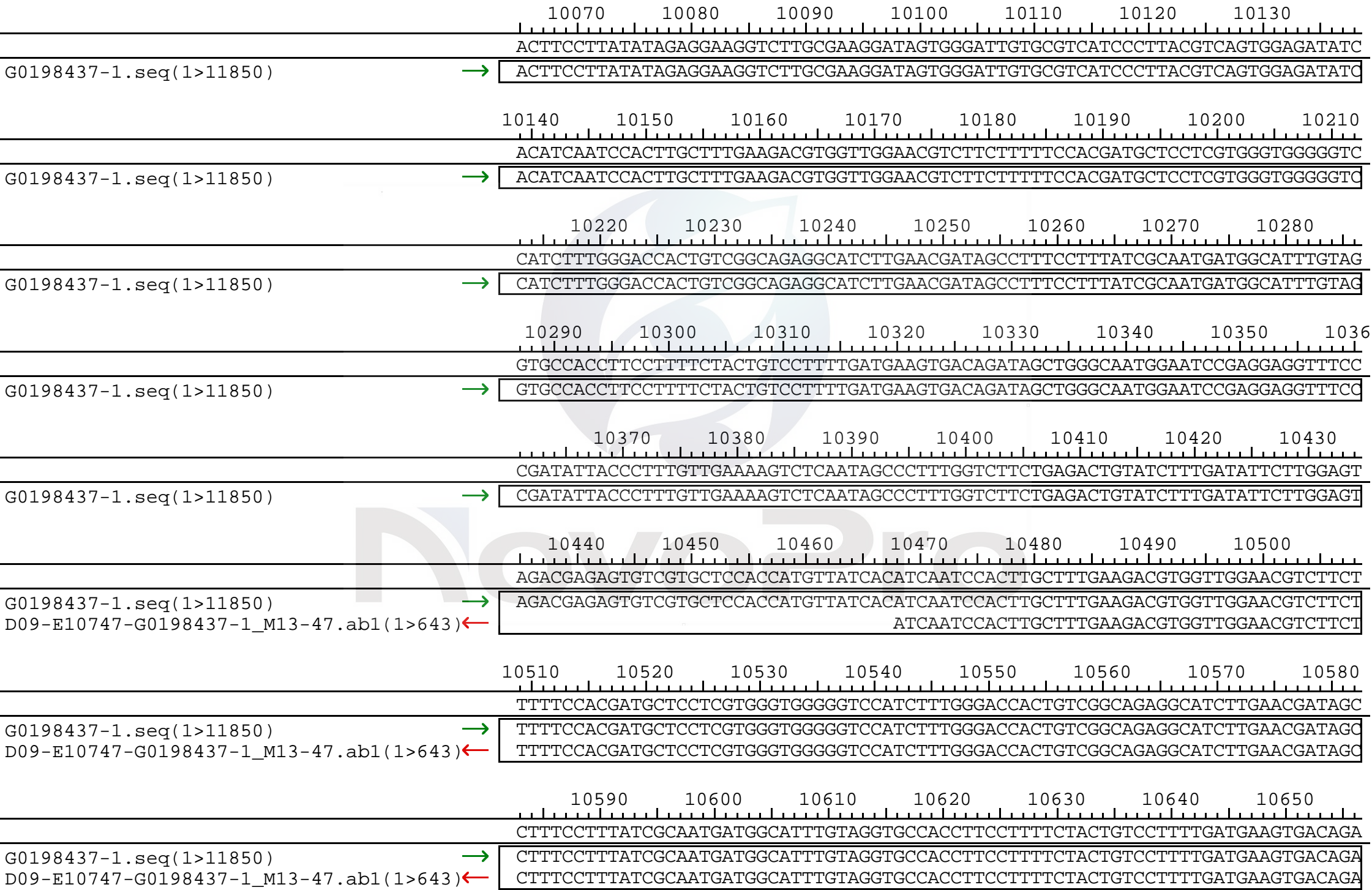


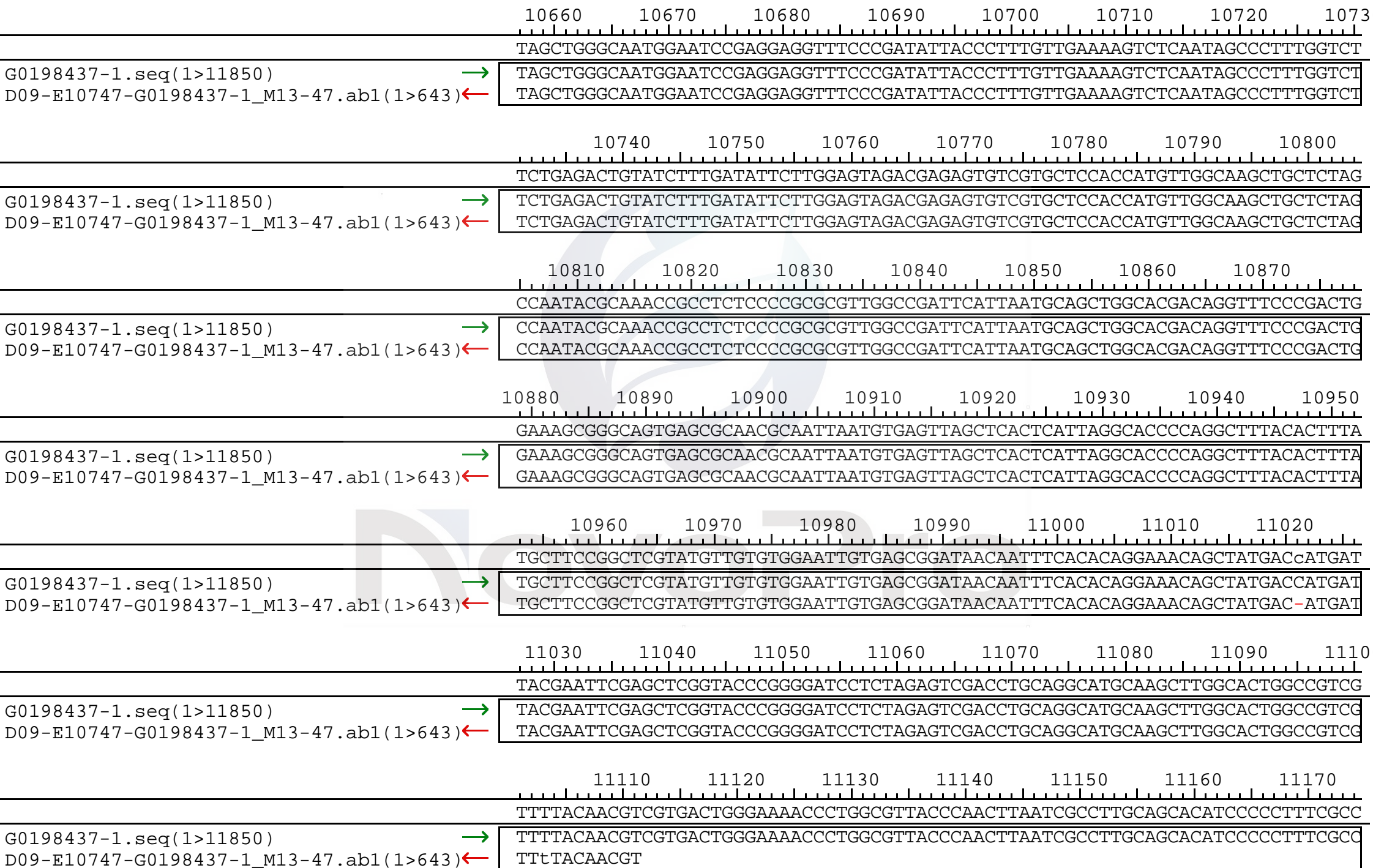












11180 11190 11200 11210 11220 11230 11240  
AGCTGGCGTAATAGCGAAGAGGCCCGCACCGATCGCCCTTCCCAACAGTTGCGCAGCCTGAATGGCGAATGCTA  
G0198437-1.seq(1>11850) → AGCTGGCGTAATAGCGAAGAGGCCCGCACCGATCGCCCTTCCCAACAGTTGCGCAGCCTGAATGGCGAATGCTA

11250 11260 11270 11280 11290 11300 11310 11320  
GAGCAGCTTGAGCTTGGATCAGATTGTCGTTTCCCGCCTTCAGTTTAGCTTCATGGAGTCAAAGATTCAAATAG  
G0198437-1.seq(1>11850) → GAGCAGCTTGAGCTTGGATCAGATTGTCGTTTCCCGCCTTCAGTTTAGCTTCATGGAGTCAAAGATTCAAATAG

11330 11340 11350 11360 11370 11380 11390  
AGGACCTAACAGAACTCGCCGTAAAGACTGGCGAACAGTTCATACAGAGTCTCTTACGACTCAATGACAAGAAG  
G0198437-1.seq(1>11850) → AGGACCTAACAGAACTCGCCGTAAAGACTGGCGAACAGTTCATACAGAGTCTCTTACGACTCAATGACAAGAAG

11400 11410 11420 11430 11440 11450 11460 11470  
AAAATCTTCGTCAACATGGTGGAGCACGACACACTTGTCTACTCCAAAAATATCAAAGATACAGTCTCAGAAGA  
G0198437-1.seq(1>11850) → AAAATCTTCGTCAACATGGTGGAGCACGACACACTTGTCTACTCCAAAAATATCAAAGATACAGTCTCAGAAGA

11480 11490 11500 11510 11520 11530 11540  
CCAAAGGGCAATTGAGACTTTTCAACAAAGGGTAATATCCGGAAACCTCCTCGGATTCCATTGCCCAGCTATCT  
G0198437-1.seq(1>11850) → CCAAAGGGCAATTGAGACTTTTCAACAAAGGGTAATATCCGGAAACCTCCTCGGATTCCATTGCCCAGCTATCT

11550 11560 11570 11580 11590 11600 11610  
GTCACTTTATTGTGAAGATAGTGGAAAAGGAAGGTGGCTCCTACAAATGCCATCATTGCGATAAAGGAAAGGCC  
G0198437-1.seq(1>11850) → GTCACTTTATTGTGAAGATAGTGGAAAAGGAAGGTGGCTCCTACAAATGCCATCATTGCGATAAAGGAAAGGCC

11620 11630 11640 11650 11660 11670 11680 11690  
ATCGTTGAAGATGCCTCTGCCGACAGTGGTCCCAAAGATGGACCCCCACCCACGAGGAGCATCGTGAAAAAGA  
G0198437-1.seq(1>11850) → ATCGTTGAAGATGCCTCTGCCGACAGTGGTCCCAAAGATGGACCCCCACCCACGAGGAGCATCGTGAAAAAGA

11700 11710 11720 11730 11740 11750 11760  
AGACGTTCCAACCACGTCTTCAAAGCAAGTGGATTGATGTGATATCTCCACTGACGTAAGGGATGACGCACAAT  
G0198437-1.seq(1>11850) → AGACGTTCCAACCACGTCTTCAAAGCAAGTGGATTGATGTGATATCTCCACTGACGTAAGGGATGACGCACAAT

11770 11780 11790 11800 11810 11820 11830 11840  
CCCACTATCCTTCGCAAGACCCTTCCTCTATATAAGGAAGTTCATTTTCATTTGGAGAGAACACGGGGGACTCTT  
G0198437-1.seq(1>11850) → CCCACTATCCTTCGCAAGACCCTTCCTCTATATAAGGAAGTTCATTTTCATTTGGAGAGAACACGGGGGACTCTT

11850  
GACCATGGTA  
G0198437-1.seq(1>11850) → GACCATGGTA

