

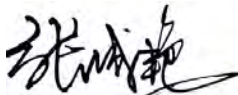
CERTIFICATE OF ANALYSIS

Product Name	Spleen peptide 13, Cat.#: 311707
Lot No.	GTA33996-0211
Sequence	NWDDMEKIWH
Dissolution condition	100%H2O
Length	19AA
Modification	N/A
Molecular Weight (MW)	1373.50
Storage	-20°C

Test Items	Specifications	Results
MW by MS	1373.50	Conforms
Purity by HPLC	>95%	97.938%
Peptide Content	N/A	N/A
Moisture content	N/A	N/A
Acetic acid content	N/A	N/A
Appearance	White to off-white lyophilized powder	Conforms
Quantity	10mg	5.0mg*2

NovoPro Bioscience Inc. (hereafter NovoPro) warrants material of said quality at the time of sale. It is the sole responsibility of the customers to determine the adequacy of all materials for any intended or specific purpose or use. NovoPro's sole obligation is to replace the material up to the extent of the purchase price. This warranty applies only to products in original packaging and does not apply to a product which has been tampered with or altered in any way in or which has been misused or damaged by accident or negligence. All claims must be received writing (by fax or email) within 30 days from date when product arrive at the destination city and failure to do so shall constitute a waiver by customers for any and all such claims.

Certified by:



Quality Assurance Department

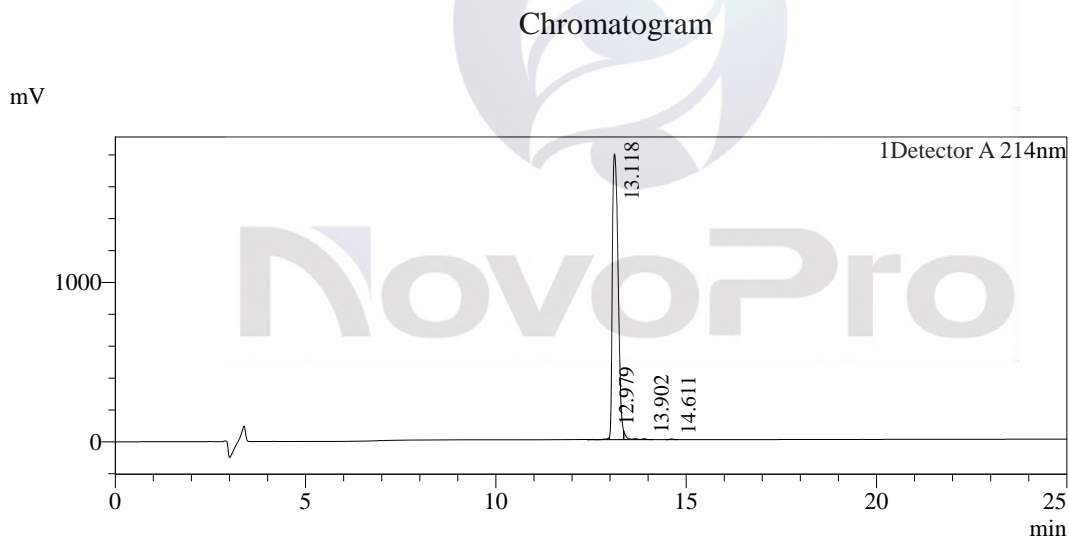
Feb 24, 2022



Sample Information

Order ID :GTA33996
 Name :Spleen peptide 13
 Sequence :NWDDMEKIWH
 Lot. No :GTA33996-0211
 Pump A :0.1% Trifluoroacetic in 100% water
 Pump B :0.1% Trifluoroacetic in 100% acetonitrile
 Total Flow :1ml/min
 Wavelength :214nm
 Analytical column type :YMC-Triart C18(4.6*250mm*5um)
 Dissolution method :100% H2O
 Inj. Volume : 10ul

Time	Module	Action	Value
0.01	Pumps	B.Conc	20
25.00	Pumps	B.Conc	45
33.00	Pumps	B.Conc	100
38.00	Pumps	B.Conc	100
40.00	Pumps	B.Conc	20
50.00	Controller	Stop	



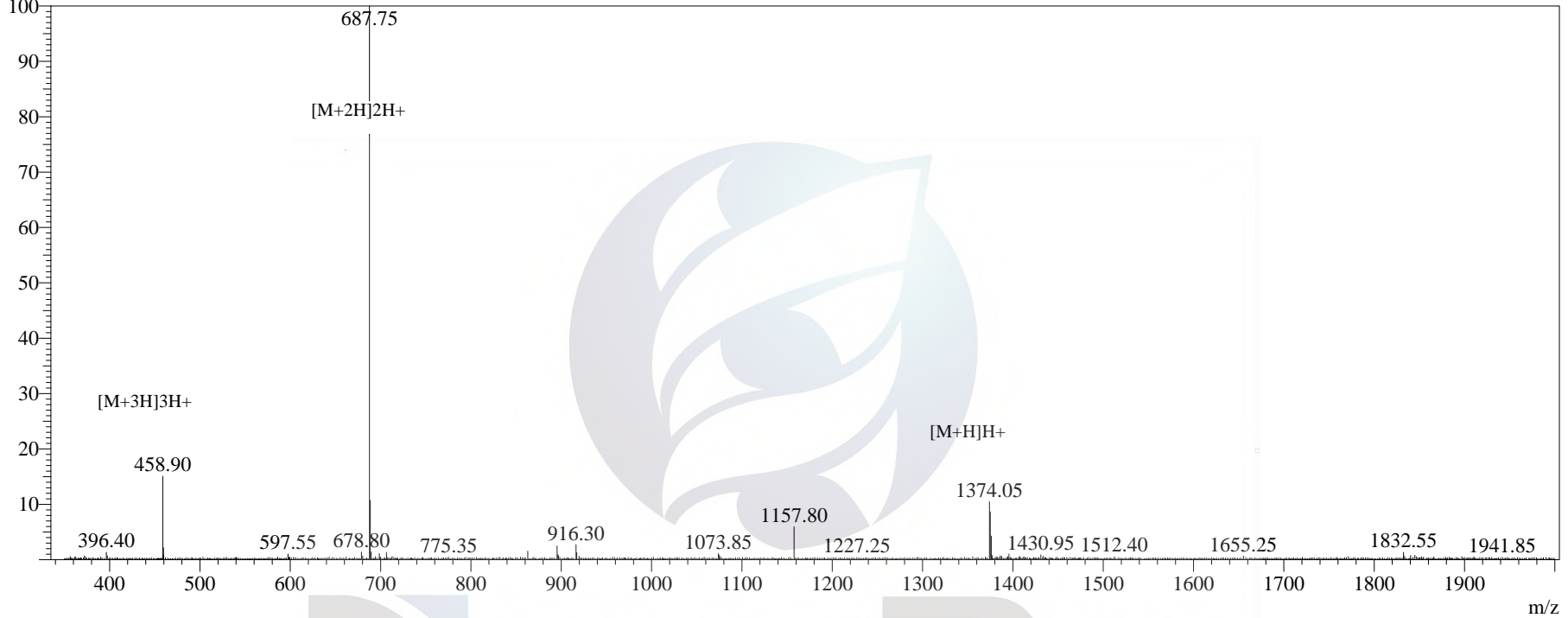
Peak Table

Detector A 214nm

Peak#	Ret. Time	Area	Height	Area%
1	12.979	86336	12098	0.452
2	13.118	18708847	1792052	97.938
3	13.902	279779	5988	1.465
4	14.611	27833	4382	0.146
Total		19102795	1814519	100.000

MS Spectrum

Positive Intensity



Sample Information

Dissolution method	:5% HAC+8% ACN+87% H2O	Interface	:ESI	Prerod Bias	:+4.5kv
Date Acquired	:2022/02/22 10:00:57	Nebulizing Gas Flow	:1.50L/min	Detector	:-0.2kv
Injection Volume	:0.2ul	CDL Temp	:250C	T.Flow	:0.2ml/min
Block Temp	:200	CDL Volt	:0v	B.conc	:50% H2O/50% MEOH

Order ID	:GTA33996
Name	:Spleen peptide 13
Sequence	:NWDDMEKIWH
Lot.No	:GTA33996-0211
Theoretical	:1373.50
Observed	:1373.50