

CERTIFICATE OF ANALYSIS

Product Name	SIINFEKL peptide, Cat.#: 319367
Lot No.	MTFA31330-0506
Sequence	SIINFEKL
Dissolution condition	100%H2O
Length	8AA
Modification	N/A
Molecular Weight (MW)	963.14
Storage	-20°C

Test Items	Specifications	Results
MW by MS	963.20	Conforms
Purity by HPLC	>95%	99.713%
Peptide content	N/A	N/A
Moisture content	N/A	N/A
Acetic acid content	N/A	N/A
Appearance	White to off-white lyophilized powder	Conforms
Quantity	40mg	5.0mg*8

NovoPro Bioscience Inc. (hereafter NovoPro) warrants material of said quality at the time of sale. It is the sole responsibility of the customers to determine the adequacy of all materials for any intended or specific purpose or use. NovoPro's sole obligation is to replace the material up to the extent of the purchase price. This warranty applies only to products in original packaging and does not apply to a product which has been tampered with or altered in any way in or which has been misused or damaged by accident or negligence. All claims must be received writing (by fax or email) within 30 days from date when product arrive at the destination city and failure to do so shall constitute a waiver by customers for any and all such claims.

Certified by:



Quality Assurance Department

May/09/2024

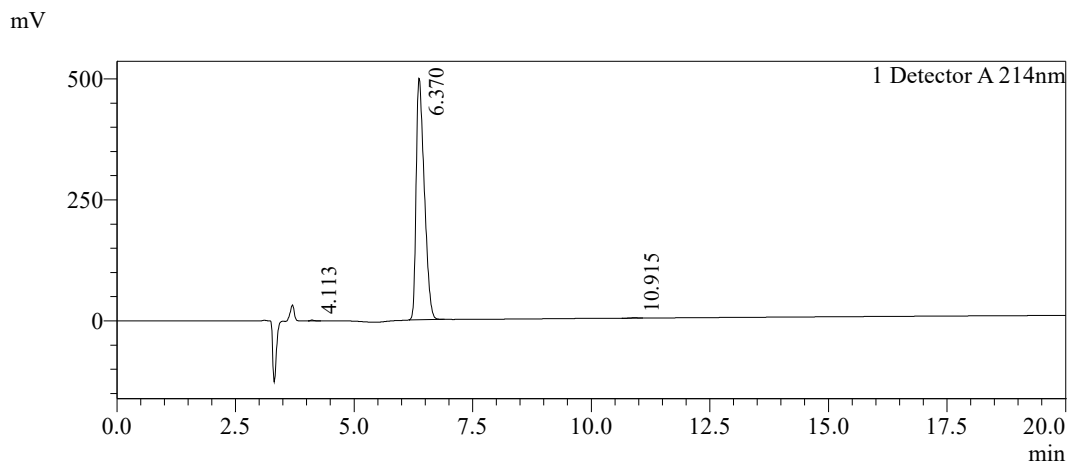


Sample Information

Order ID :MTFA31330
 Name :SIINFEKL
 Sequence :SIINFEKL
 Lot. No :MTFA31330-0506
 Pump A :0.1%Trifluoroacetic in 100% water
 Pump B :0.1%Trifluoroacetic in 100% acetonitrile
 Total Flow :1ml/min
 Wavelength :214nm
 Analytical column type :Phenomenex Luna® 5 µm C18(2) (4.6*250mm*5 µm)
 Dissolution method :100%H2O
 Inj. Volume : 20ul

Time	Module	Action	Value
0.01	Pumps	B.Conc	25
20.00	Pumps	B.Conc	45
33.00	Pumps	B.Conc	100
38.00	Pumps	B.Conc	100
40.00	Pumps	B.Conc	25
50.00	Controller	Stop	

Chromatogram

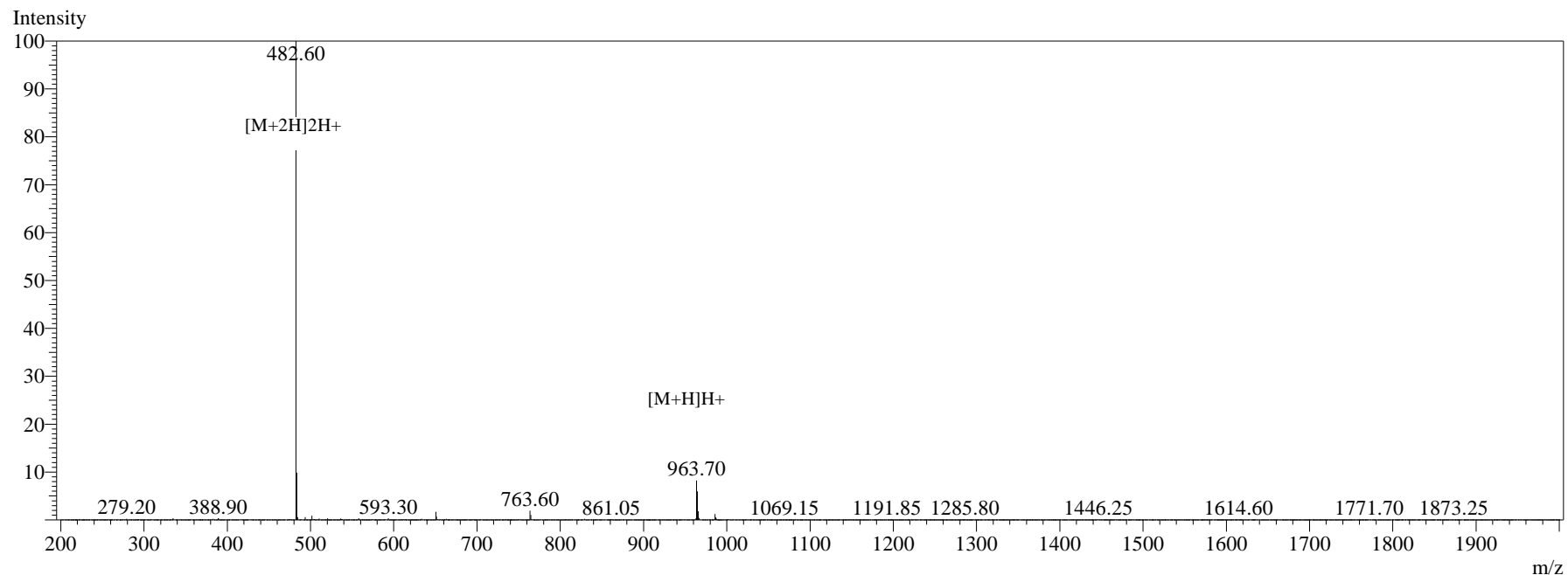


Peak Table

Detector A 214nm

Peak#	Ret. Time	Area	Height	Area%
1	4.113	8807	1734	0.147
2	6.370	5957071	498856	99.713
3	10.915	8317	913	0.139
Total		5974196	501503	100.000

MS Spectrum



Sample Information

Dissolution method	:15% ACN+85% H ₂ O	Interface	:ESI	Prerod Bias	:+4.5kv
Date Acquired	:2024/04/16 14:34:53	Nebulizing Gas Flow	:1.50L/min	Detector	:-0.2kv
Injection Volume	:0.2ul	CDL Temp	:250°C	T.Flow	:0.2ml/min
Block Temp	:200	CDL Volt	:0v	B.conc	:50% H ₂ O/50% MEOH
Order ID	:MTFA31330				
Name	:SIINFEKL				
Sequence	:SIINFEKL				
Lot.No	:MTFA31330-0506				
Theoretical	:963.14				
Observed	:963.20				