
CERTIFICATE OF ANALYSIS

Product Name	Rusfertide, Cat. # 319741
Lot No.	P260313-P2774
Sequence	Isovaleryl-Asp-Thr-His-Phe-Pro-Cys-Ile-Lys(palm-gamma-Glu)-Phe-Glu-Pro-Arg-Ser-Lys-Gly-Cys-Lys-NH ₂ (Disulfide bridge: Cys6-Cys16)
Dissolution condition	100% DMSO or 100% H ₂ O
Modification	N/A
Molecular Weight (MW)	2441.94
Storage	-20°C

Test Items	Specifications	Results
MW by MS	2441.95	Conforms
Purity by HPLC	>95%	97.52%
Endotoxin Content	N/A	N/A
TFA solubility	N/A	N/A
Moisture content	N/A	N/A
Peptide content	N/A	N/A
Appearance	White to off-white lyophilized powder	Conforms
Quantity	10.0mg	5.0mg*2

NovoPro Bioscience Inc. (hereafter NovoPro) warrants material of said quality at the time of sale. It is the sole responsibility of the customers to determine the adequacy of all materials for any intended or specific purpose or use. NovoPro's sole obligation is to replace the material up to the extent of the purchase price. This warranty applies only to products in original packaging and does not apply to a product which has been tampered with or altered in any way in or which has been misused or damaged by accident or negligence. All claims must be received writing (by fax or email) within 30 days from date when product arrive at the destination city and failure to do so shall constitute a waiver by customers for any and all such claims.

Certified by:



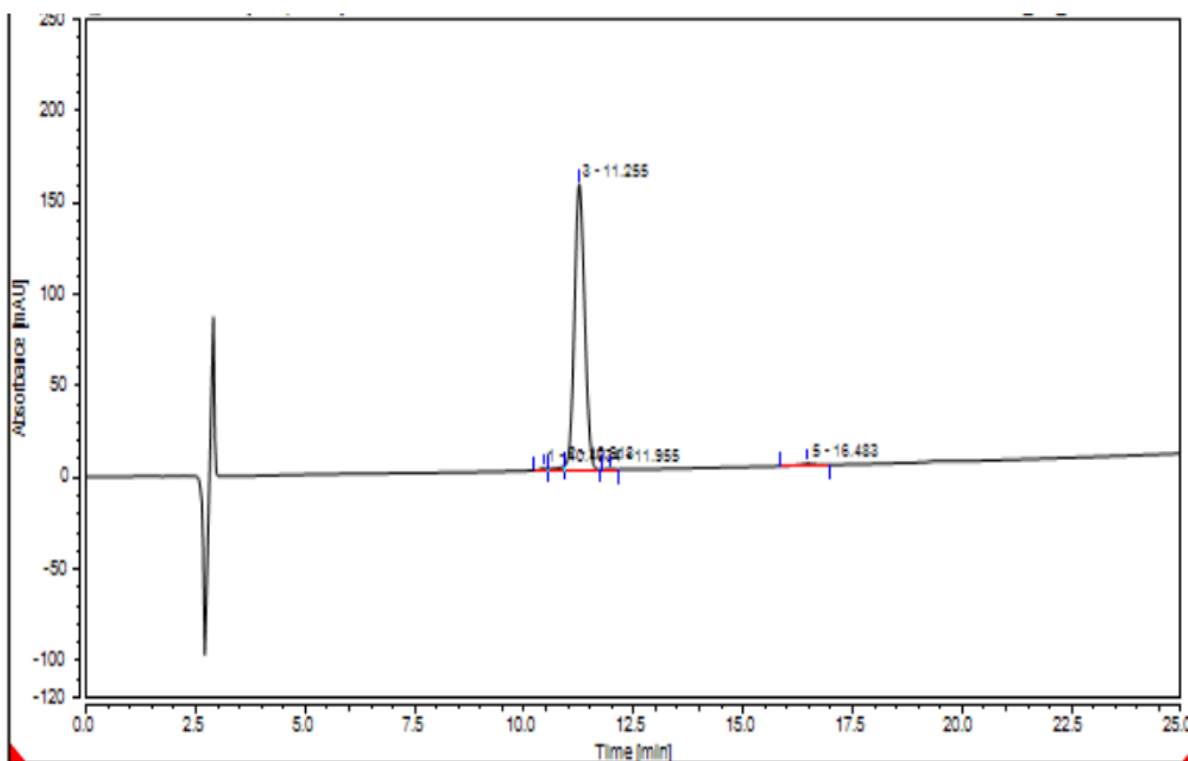
Jun/11/2026

Quality Assurance Department



Sample Information

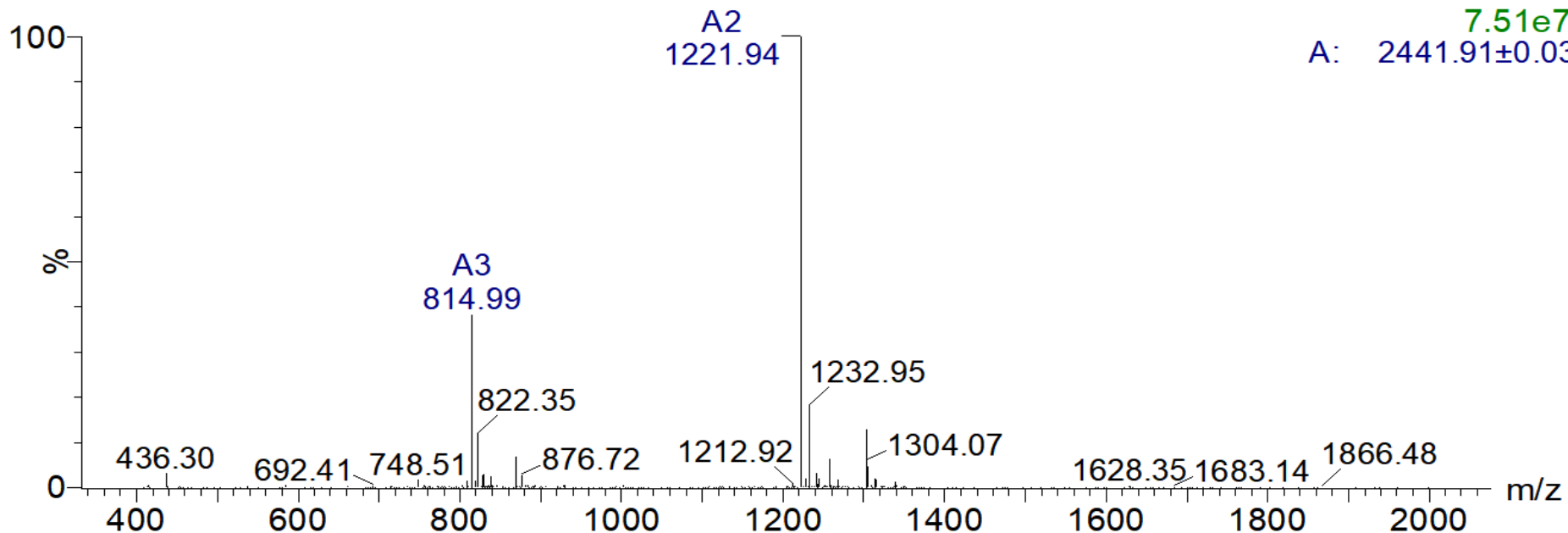
Order ID :P2774
 Name :Rusfertide, 1628323-80-7
 Sequence :Isovaleryl-Asp-Thr-His-Phe-Pro-Cys-Ile-Lys(palm-gamma-Glu)-Phe-Glu-Pro-Arg-Ser-Lys-Gly-Cys-Lys-NH2 (Disulfide bridge: Cys6-Cys16)
 Lot. No :P260313-P2774
 Pump A :0.1%TFA in Acetonitrile
 Pump B :0.1%Trifluoroacetic in 100% acetonitrile
 Total Flow :1ml/min
 Wavelength :220nm
 Analytical column type :Agilent 5 HC-C18(2) 250*4.6mm
 Dissolution method :100%DMSO



Peak Table

Peak#	Ret. Time	Area	Height	Area%
1	10.433	0.199	1.132	0.46
2	10.918	0.424	2.338	0.98
3	11.255	42.106	156.189	97.52
4	11.955	0.044	0.243	0.1
5	16.483	0.404	0.958	0.94
Total		43.178	160.860	100.000

MS Spectrum



Sample Information

Dissolution method	:0.1%HCOOH+ACN	Interface	:ESI	Prerod Bias	:+3.5kv
Date Acquired	:2026/03/16 19:14:13	Nebulizing Gas Flow	:500L/hr	Detector	:-0.2kv
Injection Volume	:2.5ul	CDL Temp	:400°C	T.Flow	:0.35ml/min
Block Temp	:150	CDL Volt	:+45v	B.conc	:50%H2O/50%MEOH
Order ID	:P2774				
Name	:Rusfertide, 1628323-80-7				
Sequence	:Isovaleryl-Asp-Thr-His-Phe-Pro-Cys-Ile-Lys(palm-gamma-Glu)-Phe-Glu-Pro-Arg-Ser-Lys-Gly-Cys-Lys-NH2 (Disulfide bridge: Cys6-Cys16)				
Lot.No	:P260313-P2774				
Theoretical	:2441.95				
Observed	:2441.94				