

**CERTIFICATE OF ANALYSIS**

<b>Product Name</b>	Retatrutide (LY3437943) peptide (TFA removed) (Cat.# 319206)
<b>Lot No.</b>	MTFA30549-1007
<b>Sequence</b>	Tyr- $\{\text{Aib}\}$ -Gln-Gly-Thr-Phe-Thr-Ser-Asp-Tyr-Ser-Ile- $\{\alpha\text{-Me-Leu}\}$ -Leu-Asp-Lys- $\{\text{diacid-C20-gamma-Glu-(AEEA)-Lys}\}$ -Ala-Gln- $\{\text{Aib}\}$ -Ala-Phe-Ile-Glu-Tyr-Leu-Leu-Glu-Gly-Gly-Pro-Ser-Ser-Gly-Ala-Pro-Pro-Ser-NH <sub>2</sub> (Sodium salt)
<b>Dissolution condition</b>	100%H <sub>2</sub> O
<b>Length</b>	39AA
<b>Modification</b>	sodium salt
<b>Molecular Weight (MW)</b>	4731.33
<b>Storage</b>	-20°C

<b>Test Items</b>	<b>Specifications</b>	<b>Results</b>
<b>MW by MS</b>	4731.60	Conforms
<b>Purity by HPLC</b>	>95%	95.339%
<b>Peptide Content</b>	N/A	N/A
<b>Moisture content</b>	N/A	N/A
<b>Acetic acid content</b>	N/A	N/A
<b>Appearance</b>	White to off-white lyophilized powder	Conforms
<b>Quantity</b>	1g	5.0mg*200

NovoPro Bioscience Inc. (hereafter NovoPro) warrants material of said quality at the time of sale. It is the sole responsibility of the customers to determine the adequacy of all materials for any intended or specific purpose or use. NovoPro's sole obligation is to replace the material up to the extent of the purchase price. This warranty applies only to products in original packaging and does not apply to a product which has been tampered with or altered in any way in or which has been misused or damaged by accident or negligence. All claims must be received in writing (by fax or email) within 30 days from date when product arrive at the destination city and failure to do so shall constitute a waiver by customers for any and all such claims.

Certified by:



Oct/17/2023

Quality Assurance Department

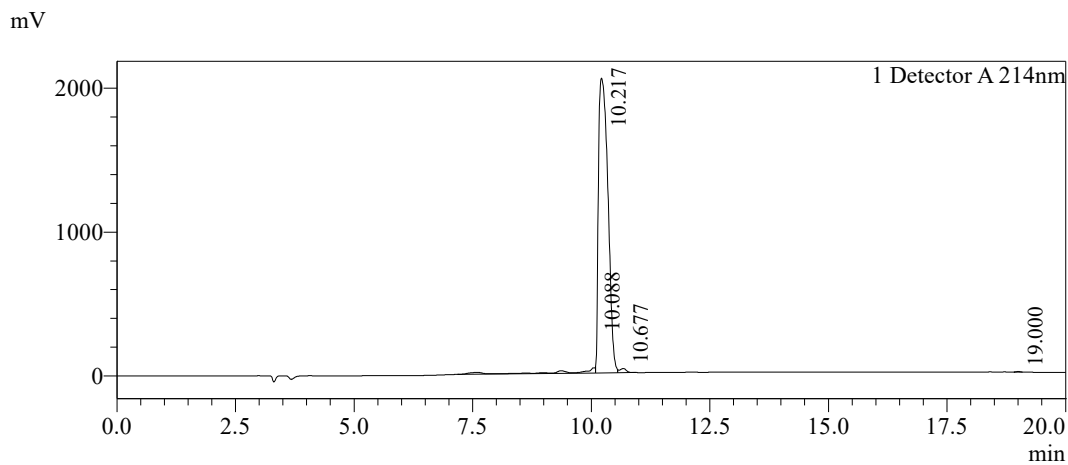


Sample Information

Order ID :MTFA30549  
 Name :Retatrutide  
 Sequence :Tyr- {Aib}-Gln-Gly-Thr-Phe-Thr-Ser-Asp-Tyr-Ser-Ile- {α-Me-Leu}-Leu-  
 -Asp-Lys- {diacid-C20-gamma-Glu-(AEEA)-Lys}-Ala-Gln- {Aib}-Ala-  
 Phe-Ile-Glu-Tyr-Leu-Leu-Glu-Gly-Gly-Pro-Ser-Ser-Gly-Ala-Pro-Pro-  
 Pro-Ser-NH2  
 Lot. No :MTFA30549-1007  
 Pump A :0.1%Trifluoroacetic in 100% water  
 Pump B :0.1%Trifluoroacetic in 100% acetonitrile  
 Total Flow :1ml/min  
 Wavelength :214nm  
 Analytical column type :Phenomenex Luna® 5 μm C18 (2) (4.6\*250mm\*5 μm)  
 Dissolution method :50%ACN+50%H2O  
 Inj. Volume : 20ul

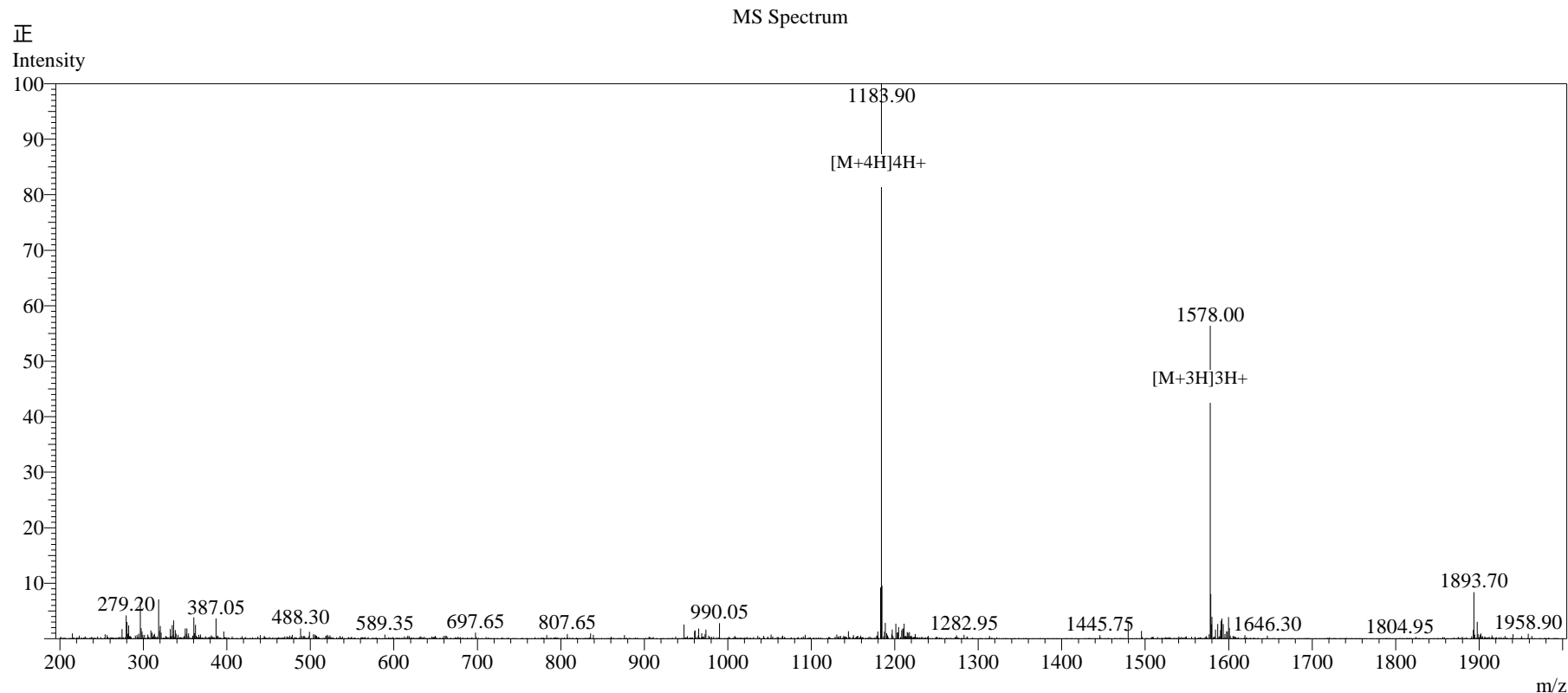
Time	Module	Action	Value
0.01	Pumps	B.Conc	45
20.00	Pumps	B.Conc	65
33.00	Pumps	B.Conc	100
38.00	Pumps	B.Conc	100
40.00	Pumps	B.Conc	45
50.00	Controller	Stop	

Chromatogram



Peak Table

Detector A 214nm				
Peak#	Ret. Time	Area	Height	Area%
1	10.088	1089447	35788	3.648
2	10.217	28475266	2046538	95.339
3	10.677	282446	29154	0.946
4	19.000	20345	3643	0.068
Total		29867504	2115123	100.000



### Sample Information

Dissolution method	:5% HCOOH+15% ACN+80% H <sub>2</sub> O	Interface	:ESI	Prerod Bias	:+4.5kv
Date Acquired	:2023/10/17 09:49:26	Nebulizing Gas Flow	:1.50L/min	Detector	:-0.2kv
Injection Volume	:0.2ul	CDL Temp	:250°C	T.Flow	:0.2ml/min
Block Temp	:200	CDL Volt	:0v	B.conc	:50% H <sub>2</sub> O/50% MEOH

Order ID	:MTFA30549
Name	:Retatrutide
Sequence	:Tyr-{Aib}-Gln-Gly-Thr-Phe-Thr-Ser-Asp-Tyr-Ser-Ile- $\{\alpha$ -Me-Leu}-Leu-Asp-Lys-{diacid-C20-gamma-Glu-(AEEA)-Lys}-Ala-Gln-{Aib}-Ala-Phe-Ile-Glu-Tyr-Leu-Leu-Glu-Gly-Gly-Pro-Ser-Ser-Gly-Ala-Pro-Pro-Pro-Ser-NH <sub>2</sub>
Lot.No	:MTFA30549-1007
Theoretical	:4731.33
Observed	:4731.60

## Instructions for dissolving Retatrutide (LY3437943)

The Retatrutide is soluble in 100% H<sub>2</sub>O or 1xPBS. The maximum concentration is 5.0 mg/ml.

The steps are as below:

1. Adding 1.0 ml ultrapure water to the 2.0 ml tube of Retatrutide;
2. Wait about 1 minute at room temperature until the solution is clear, which indicates the peptide is fully dissolved;
3. Use a sterile 0.22  $\mu$ m membrane filter for a particle-free and bacteria-free Retatrutide solution.

For example, Catalog# SLGPR33RB, Millipore Millex-GP Syringe Filter Unit, 0.22  $\mu$ m, polyethersulfone, 33 mm, gamma sterilized.