

CERTIFICATE OF ANALYSIS

Product Name	Melimine, Cat.#: 318829
Lot No.	MTFA32278-1-1230
Sequence	TLISWIKNKRKQRPRVSRRRRRRGGRRRR
Dissolution condition	100%H2O
Length	29AA
Modification	N/A
Molecular Weight (MW)	3786.47
Storage	-20°C

Test Items	Specifications	Results
MW by MS	3787.00	Conforms
Purity by HPLC	>95%	97.566%
Peptide content	N/A	N/A
Moisture content	N/A	N/A
Acetic acid content	N/A	N/A
Appearance	White to off-white lyophilized powder	Conforms
Quantity	20mg	5.0mg*4

NovoPro Bioscience Inc. (hereafter NovoPro) warrants material of said quality at the time of sale. It is the sole responsibility of the customers to determine the adequacy of all materials for any intended or specific purpose or use. NovoPro's sole obligation is to replace the material up to the extent of the purchase price. This warranty applies only to products in original packaging and does not apply to a product which has been tampered with or altered in any way in or which has been misused or damaged by accident or negligence. All claims must be received writing (by fax or email) within 30 days from date when product arrive at the destination city and failure to do so shall constitute a waiver by customers for any and all such claims.

Certified by:



Quality Assurance Department

Jan/03/2025

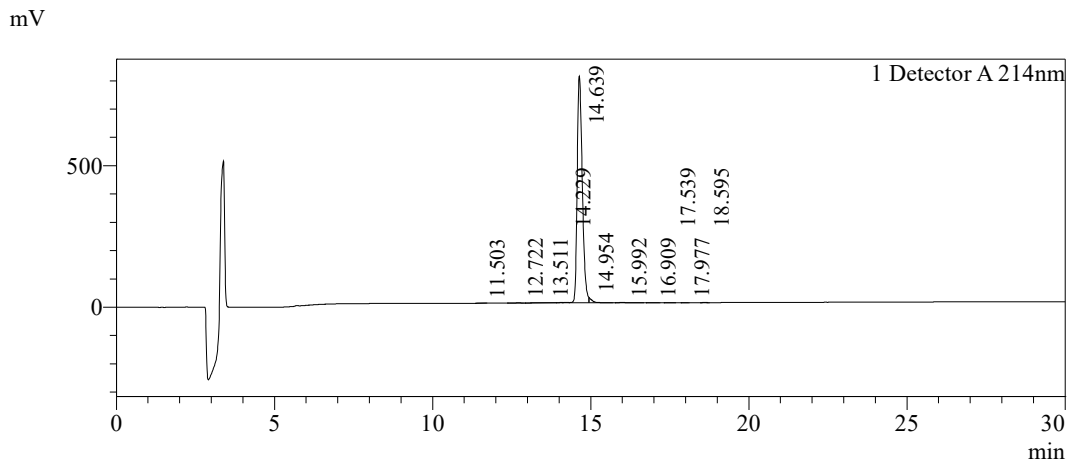


Sample Information

Order ID :MTFA32278-1
 Name :Melimine
 Sequence :TLISWIKNKRKQRPRVSRRRRRRGRRRR
 Lot. No :MTFA32278-1-1230
 Pump A :0.1%Trifluoroacetic in 100% water
 Pump B :0.1%Trifluoroacetic in 100% acetonitrile
 Total Flow :1ml/min
 Wavelength :214nm
 Analytical column type :Kromasil 100-5-C18 (4.6*250mm*5 µm)
 Dissolution method :100%H2O
 Inj. Volume : 25ul

Time	Module	Action	Value
0.01	Pumps	B.Conc	15
30.00	Pumps	B.Conc	45
33.00	Pumps	B.Conc	100
38.00	Pumps	B.Conc	100
40.00	Pumps	B.Conc	15
50.00	Controller	Stop	

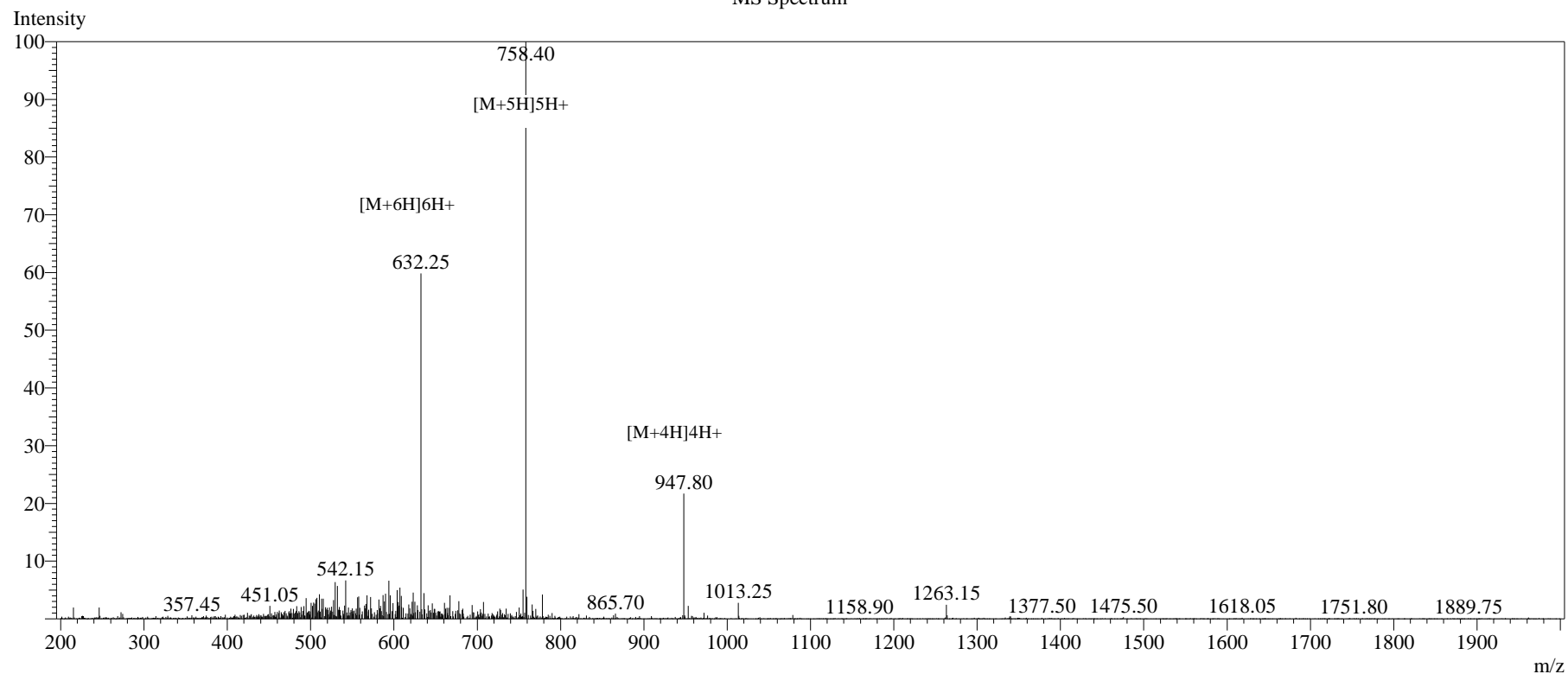
Chromatogram



Peak Table

Peak#	Ret. Time	Area	Height	Area%
1	11.503	5909	775	0.064
2	12.722	14082	1261	0.153
3	13.511	20489	799	0.222
4	14.229	21290	1085	0.231
5	14.639	899298	800579	97.566
6	14.954	127750	17854	1.386
7	15.992	19390	1200	0.210
8	16.909	6792	580	0.074
9	17.539	2955	312	0.032
10	17.977	1431	213	0.016
11	18.595	4296	628	0.047
Total		9217332	825287	100.000

MS Spectrum



Sample Information

Dissolution method	:15% ACN+85% H ₂ O	Interface	:ESI	Prerod Bias	:+4.5kv
Date Acquired	:2025/01/02 13:40:14	Nebulizing Gas Flow	:1.50L/min	Detector	:-0.2kv
Injection Volume	:0.2ul	CDL Temp	:250°C	T.Flow	:0.2ml/min
Block Temp	:200	CDL Volt	:0v	B.conc	:50% H ₂ O/50% MEOH

Order ID	:MTFA32278-1
Name	:Melimine
Sequence	:TLISWIKNKRKQRPRVSRRRRRRGRRRR
Lot.No	:MTFA32278-1-1230
Theoretical	:3786.47
Observed	:3787.00