

CERTIFICATE OF ANALYSIS

Product Name	N-lactoyl-phenylalanine (Lac-Phe) peptide, Cat.#: 318943-TFA
Lot No.	XF999139
Sequence	Lac-Phe-OH (TFA removed, Acetate salt)
Dissolution condition	100%H ₂ O
Length	2 AA
Modification	N/A
Molecular Weight (MW)	237.25
Storage	-20°C

Test Items	Specifications	Results
MW by MS	237.25	Conforms
Purity by HPLC	>95%	96.83%
Peptide Content	N/A	N/A
Moisture content	N/A	N/A
Acetic acid content	N/A	N/A
Appearance	White to off-white lyophilized powder	Conforms
Quantity	4,000 mg	50mg*80

NovoPro Bioscience Inc. (hereafter NovoPro) warrants material of said quality at the time of sale. It is the sole responsibility of the customers to determine the adequacy of all materials for any intended or specific purpose or use. NovoPro's sole obligation is to replace the material up to the extent of the purchase price. This warranty applies only to products in original packaging and does not apply to a product which has been tampered with or altered in any way in or which has been misused or damaged by accident or negligence. All claims must be received writing (by fax or email) within 30 days from date when product arrive at the destination city and failure to do so shall constitute a waiver by customers for any and all such claims.

Certified by:



Quality Assurance Department

Apr/03/2024



HPLC

Sample Description:

Analyst:YSC

Structure:Lac-Phe

Lot NO. :XF999139

Number:0200193

Column:250*4.6mm, Boston Green ODS-AQ

Solvent A:0.1%TFA in 100%water

Solvent B:0.1%TFA in 100%acetonitrile

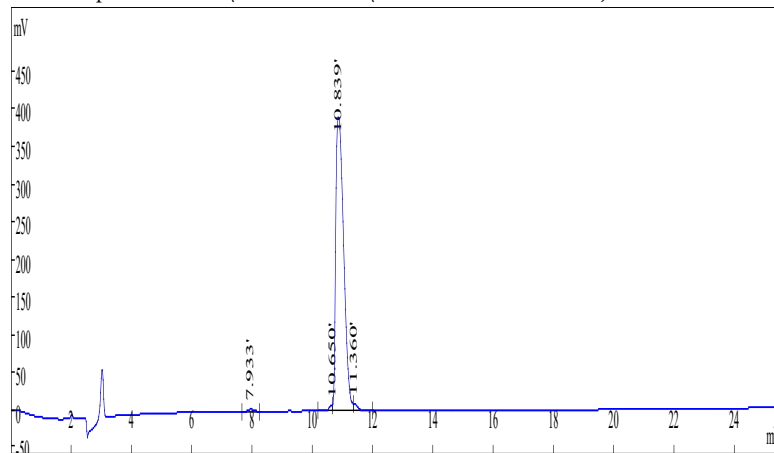
Gradient :	A	B
0.1min	75	25
25min	50	50
25.01min	0	100
30min	0	100

Flow rate:1.0ml/min

Wavelength (nm) :220

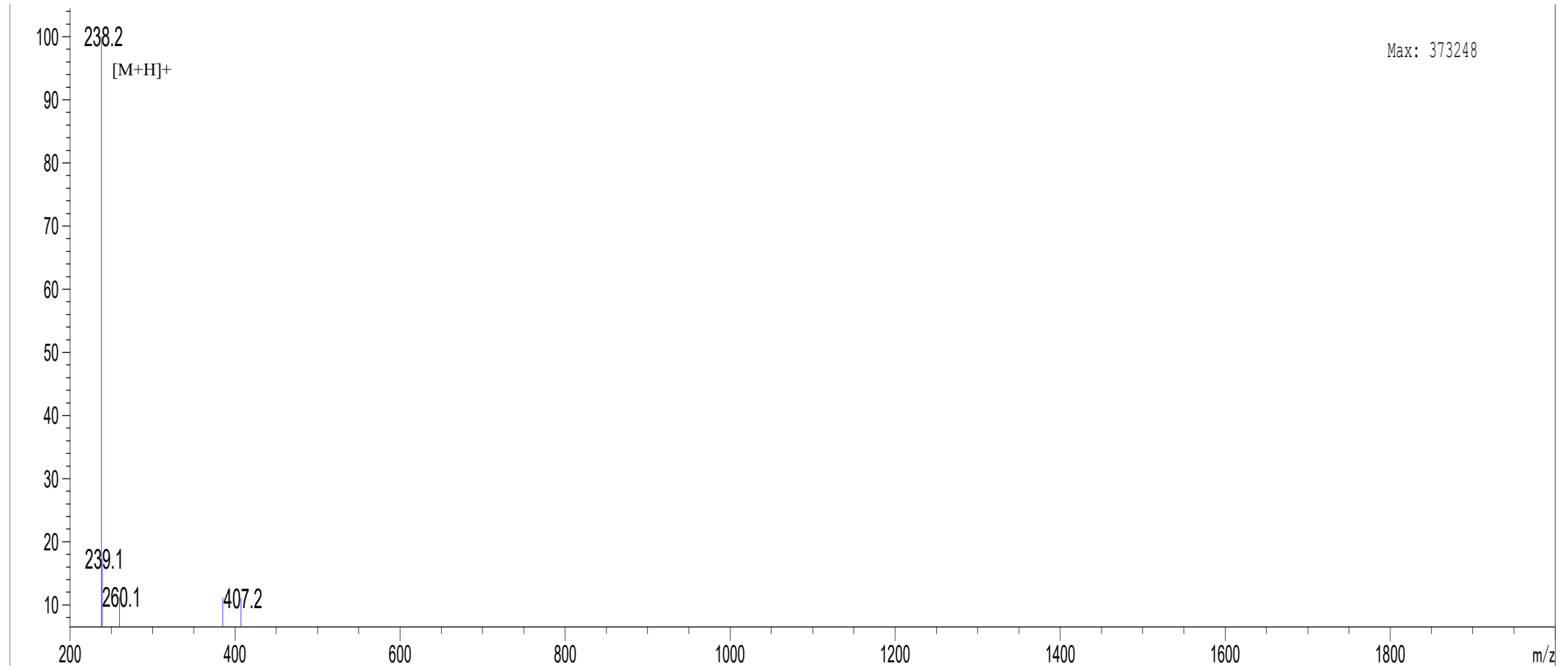
Volume:10ul

File opened: F:\2024 HPLC\999139 240401.hw, where



Rank	Time	Conc.	Area	Height
1	7.933	0.7311	51012	5612
2	10.650	1.039	72458	9551
3	10.839	96.83	6755669	391669
4	11.360	1.401	97746	10493
Total		100	6976885	417325

MASS SPECTROMETRY REPORT


Sample Description

Analyzed date: 2024-03-20
 Analyst: YU
 Sample: Leu-Phe
 M.W.: 237.28
 Lot. No.: XF999139

Instrument

Agilent-6125B
 Probe: ESI
 Nebulizer Gas Flow: 1.5L/min
 CDL: -20.0v
 CDL Temp.: 250 °C
 Block Temp.: 200 °C

Probe Bias: +4.5kv
 Detector: 1.5kv
 T. Flow: 0.2ml/min
 B. Conc.: 50%H2O/50%ACN