

CERTIFICATE OF ANALYSIS

Product Name	KEMPFKYPVEP peptide, Cat.#: 319007
Lot No.	MTFA30093-0418
Sequence	KEMPFKYPVEP
Dissolution condition	100%H ₂ O
Length	12AA
Modification	N/A
Molecular Weight (MW)	1461.72
Storage	-20°C

Test Items	Specifications	Results
MW by MS	1461.06	Conforms
Purity by HPLC	>95%	99.506%
Peptide Content	N/A	N/A
Moisture content	N/A	N/A
Acetic acid content	N/A	N/A
Appearance	White to off-white lyophilized powder	Conforms
Quantity	10mg	5.0mg*2

NovoPro Bioscience Inc. (hereafter NovoPro) warrants material of said quality at the time of sale. It is the sole responsibility of the customers to determine the adequacy of all materials for any intended or specific purpose or use. NovoPro's sole obligation is to replace the material up to the extent of the purchase price. This warranty applies only to products in original packaging and does not apply to a product which has been tampered with or altered in any way in or which has been misused or damaged by accident or negligence. All claims must be received writing (by fax or email) within 30 days from date when product arrive at the destination city and failure to do so shall constitute a waiver by customers for any and all such claims.

Certified by:



Quality Assurance Department

Apr/25/2023

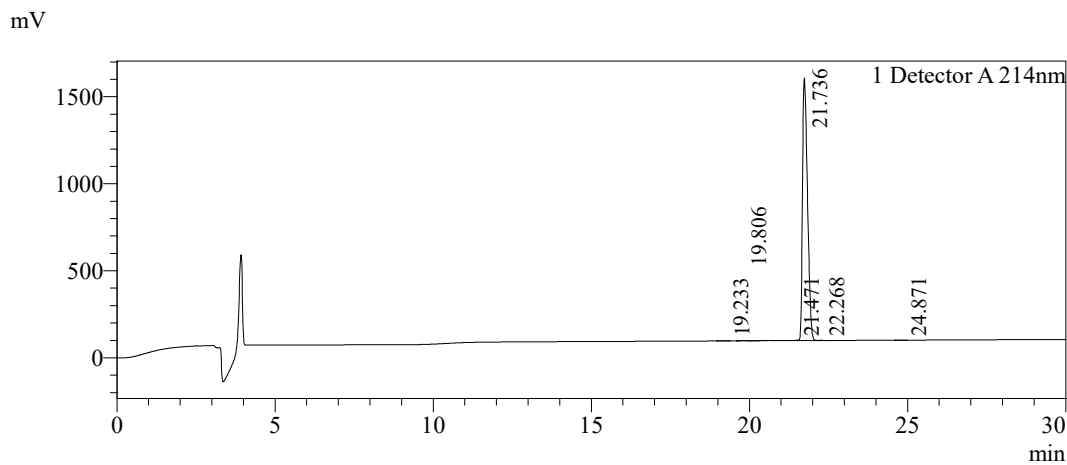


Sample Information

Order ID :MTFA30093
 Name :KEMPFKYPVEP peptide, Cat.#: 319007
 Sequence :KEMPFKYPVEP
 Lot. No :MTFA30093-0418
 Pump A :0.1%Trifluoroacetic in 100% water
 Pump B :0.1%Trifluoroacetic in 100% acetonitrile
 Total Flow :1ml/min
 Wavelength :214nm
 Analytical column type :Shim-pack GIST C18(4.6*250mm*5um)
 Dissolution method :100%H2O
 Inj. Volume : 25ul

Time	Module	Action	Value
0.01	Pumps	B.Conc	15
30.00	Pumps	B.Conc	45
33.00	Pumps	B.Conc	100
38.00	Pumps	B.Conc	100
40.00	Pumps	B.Conc	15
50.00	Controller	Stop	

Chromatogram

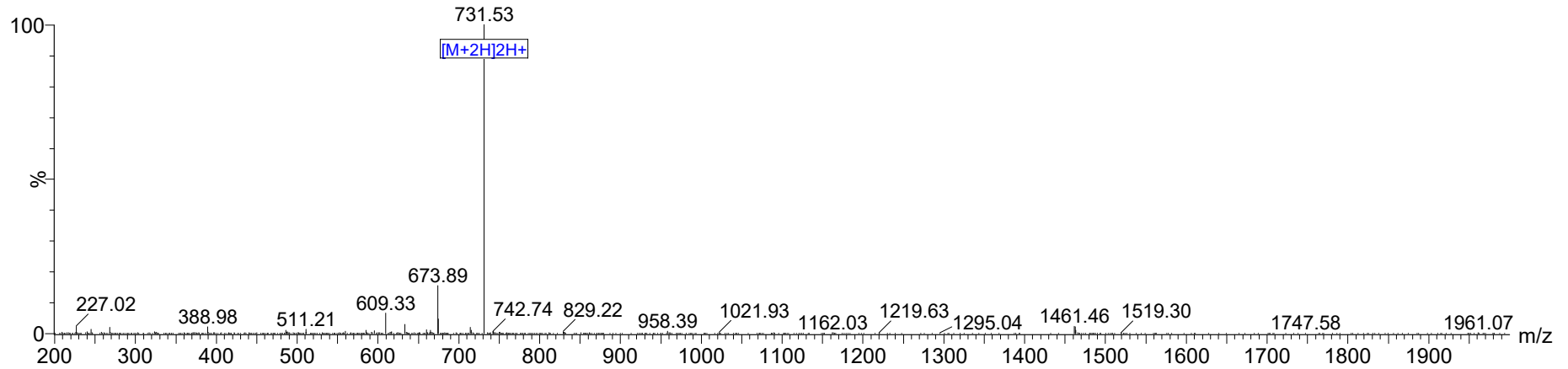


Peak Table

Detector A 214nm

Peak#	Ret. Time	Area	Height	Area%
1	19.233	4813	456	0.029
2	19.806	38603	2650	0.231
3	21.471	27604	1187	0.165
4	21.736	16597986	1508110	99.506
5	22.268	9008	663	0.054
6	24.871	2386	145	0.014
Total		16680400	1513212	100.000

MS Spectrum

 Positive
Intensity


Dissolution method	:15%ACN+85%H2O	Interface	:ESI	Prerod Bias	:+4.5kv
Date Acquired	:2023/4/25 21:05:56	Nebulizing Gas Flow	:1.50L/min	Detector	:-0.2kv
Injection Volume	:0.2ul	CDL Temp	:250C	T.Flow	:0.2ml/min
Block Temp	:200	CDL Volt	:0v	B.conc	:50%H2O/50%MEOH

Order ID	: MTF30093
Name	: KEMPFKYPVEP peptide, Cat.#: 319007
Sequence	: KEMPFKYPVEP
Lot.No	: MTF30093-0418
Theoretical	: 1461.72
Observed	: 1461.06