
CERTIFICATE OF ANALYSIS

Product Name	Growth hormone-releasing hormone-like peptide 2 (Cat.#: 312925)
Lot No.	GTA34368-11-0712
Sequence	HSDGIFTSDYRRYLGQLSAQKFLQWLM
Dissolution condition	100%H2O
Length	27AA
Modification	N/A
Molecular Weight (MW)	3261.66
Storage	-20°C

Test Items	Specifications	Results
MW by MS	3261.75	Conforms
Purity by HPLC	>95%	95.123%
Peptide Content	N/A	N/A
Moisture content	N/A	N/A
Acetic acid content	N/A	N/A
Appearance	White to off-white lyophilized powder	Conforms
Quantity	10mg	5.0mg*2

NovoPro Bioscience Inc. (hereafter NovoPro) warrants material of said quality at the time of sale. It is the sole responsibility of the customers to determine the adequacy of all materials for any intended or specific purpose or use. NovoPro's sole obligation is to replace the material up to the extent of the purchase price. This warranty applies only to products in original packaging and does not apply to a product which has been tampered with or altered in any way in or which has been misused or damaged by accident or negligence. All claims must be received writing (by fax or email) within 30 days from date when product arrive at the destination city and failure to do so shall constitute a waiver by customers for any and all such claims.

Certified by:



Quality Assurance Department

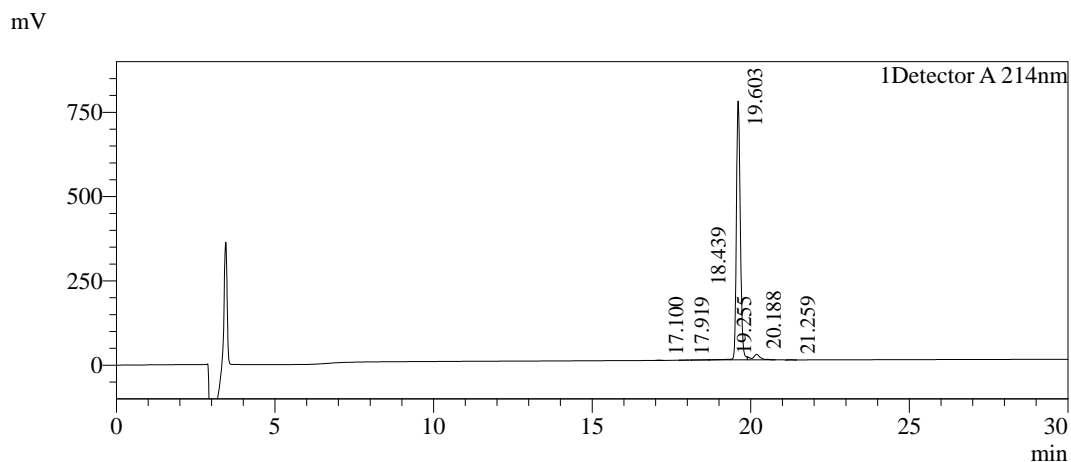
Aug/01/2022



Sample Information

Order ID	:GTA34368-11		
Name	:Growth hormone-releasing hormone-like peptide 2 (from Chelyosoma productum, sea squirt)		
Sequence	:HSDGIFTSDYRRYLGQLSAQKFLQWLM		
Lot. No	:GTA34368-11-0712		
Pump A	:0.1% Trifluoroacetic in 100% water		
Pump B	:0.1% Trifluoroacetic in 100% acetonitrile		
Total Flow	:1ml/min		
Wavelength	:214nm		
Analytical column type	:YMC-Triart C18(4.6*250mm*5um)		
Dissolution method	:100% H2O		
Inj. Volume	: 20ul		
Time	Module	Action	Value
0.01	Pumps	B.Conc	25
30.00	Pumps	B.Conc	55
33.00	Pumps	B.Conc	100
38.00	Pumps	B.Conc	100
40.00	Pumps	B.Conc	25
50.00	Controller	Stop	

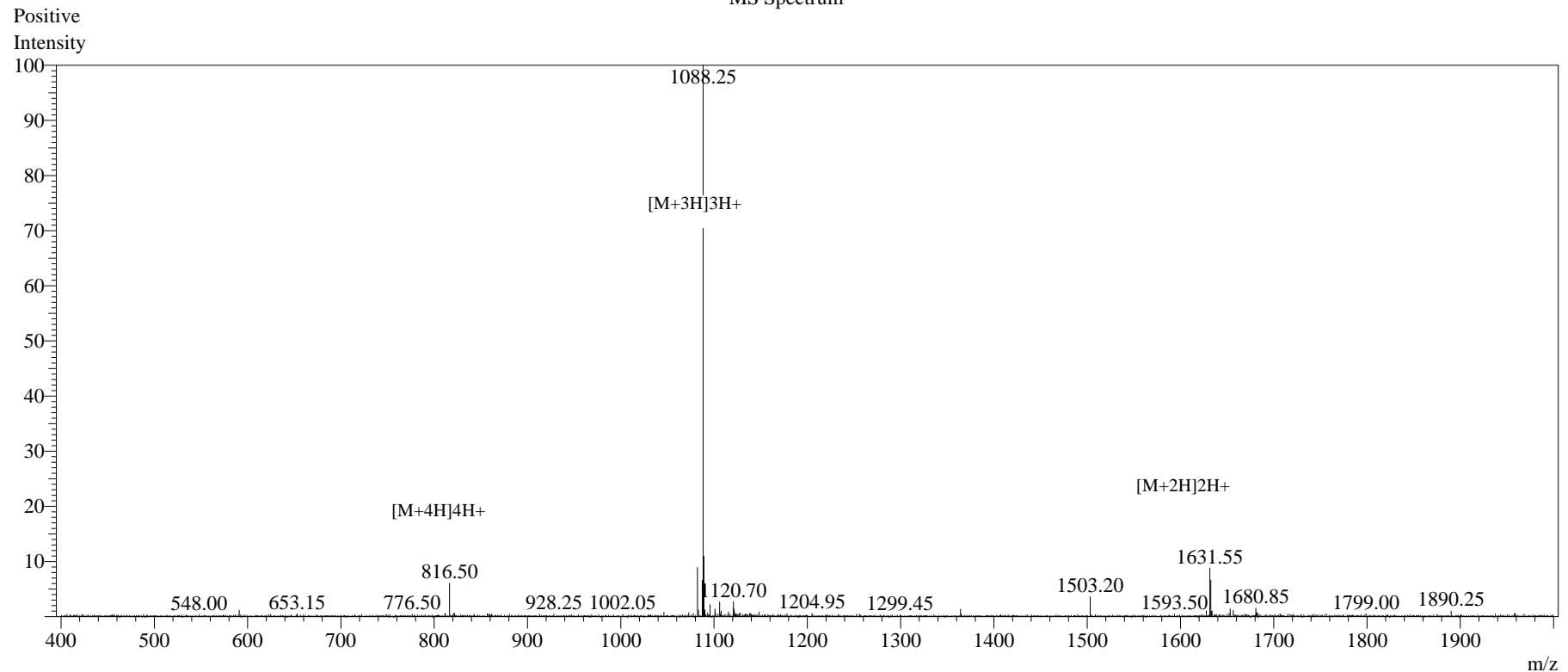
Chromatogram



Peak Table

Detector A 214nm				
Peak#	Ret. Time	Area	Height	Area%
1	17.100	6570	897	0.095
2	17.919	4937	657	0.071
3	18.439	15408	1064	0.222
4	19.255	32630	1644	0.471
5	19.603	6595763	767713	95.123
6	20.188	273753	16338	3.948
7	21.259	4852	648	0.070
Total		6933913	788961	100.000

MS Spectrum



Sample Information

Dissolution method	:15%ACN+85%H2O	Interface	:ESI	Prerod Bias	:+4.5kv
Date Acquired	:2022/07/29 17:05:52	Nebulizing Gas Flow	:1.50L/min	Detector	:-0.2kv
Injection Volume	:0.2ul	CDL Temp	:250C	T.Flow	:0.2ml/min
Block Temp	:200	CDL Volt	:0v	B.conc	:50%H2O/50%MEOH

Order ID	:GTA34368-11
Name	:Growth hormone-releasing hormone-like peptide 2(from Chelyosoma productum, sea squirt)
Sequence	:HSDGIFTSYRRYLGQLSAQKFLQWLM
Lot.No	:GTA34368-11-0712
Theoretical	:3261.66
Observed	:3261.75