
CERTIFICATE OF ANALYSIS

Product Name	Growth hormone-releasing hormone related peptide, GHRH-RP (Cat.#: 306956)
Lot No.	GTA34368-10-0712
Sequence	HLDRVWAEDKQMALESILQGFPRMKLSAEA
Dissolution condition	100%H ₂ O
Length	30AA
Modification	N/A
Molecular Weight (MW)	3470.95
Storage	-20°C

Test Items	Specifications	Results
MW by MS	3471.15	Conforms
Purity by HPLC	>95%	95.157%
Peptide Content	N/A	N/A
Moisture content	N/A	N/A
Acetic acid content	N/A	N/A
Appearance	White to off-white lyophilized powder	Conforms
Quantity	10mg	5.0mg*2

NovoPro Bioscience Inc. (hereafter NovoPro) warrants material of said quality at the time of sale. It is the sole responsibility of the customers to determine the adequacy of all materials for any intended or specific purpose or use. NovoPro's sole obligation is to replace the material up to the extent of the purchase price. This warranty applies only to products in original packaging and does not apply to a product which has been tampered with or altered in any way in or which has been misused or damaged by accident or negligence. All claims must be received writing (by fax or email) within 30 days from date when product arrive at the destination city and failure to do so shall constitute a waiver by customers for any and all such claims.

Certified by:



Quality Assurance Department

Aug/01/2022

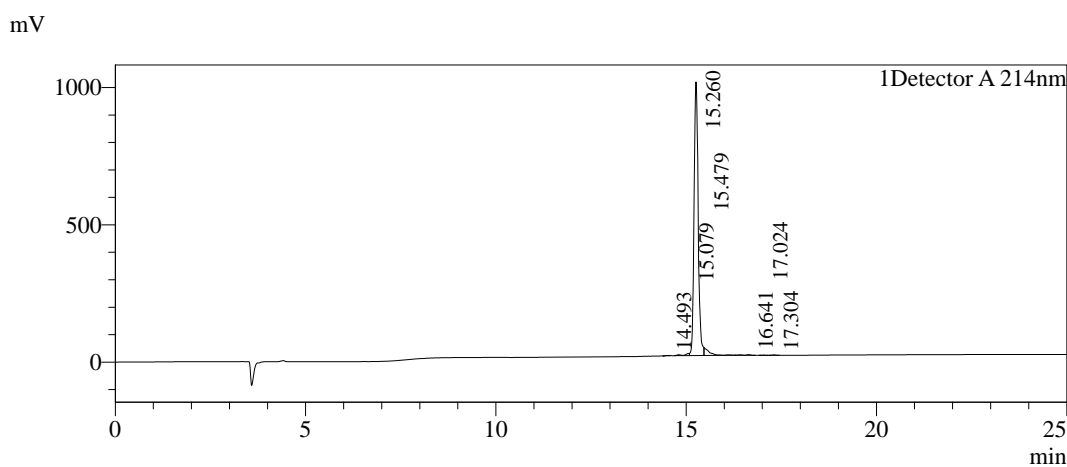


Sample Information

Order ID :GTA34368-10
 Name :Growth hormone-releasing hormone related peptide, GHRH-RP
 Sequence :HLDRVWAEDKQMALESILQGFPRMKLSAEA
 Lot. No :GTA34368-10-0712
 Pump A :0.1% Trifluoroacetic in 100% water
 Pump B :0.1% Trifluoroacetic in 100% acetonitrile
 Total Flow :1ml/min
 Wavelength :214nm
 Analytical column type :YMC-Triart C18(4.6*250mm*5um)
 Dissolution method :100% H2O
 Inj. Volume : 25ul

Time	Module	Action	Value
0.01	Pumps	B.Conc	25
25.00	Pumps	B.Conc	50
33.00	Pumps	B.Conc	100
38.00	Pumps	B.Conc	100
40.00	Pumps	B.Conc	25
50.00	Controller	Stop	

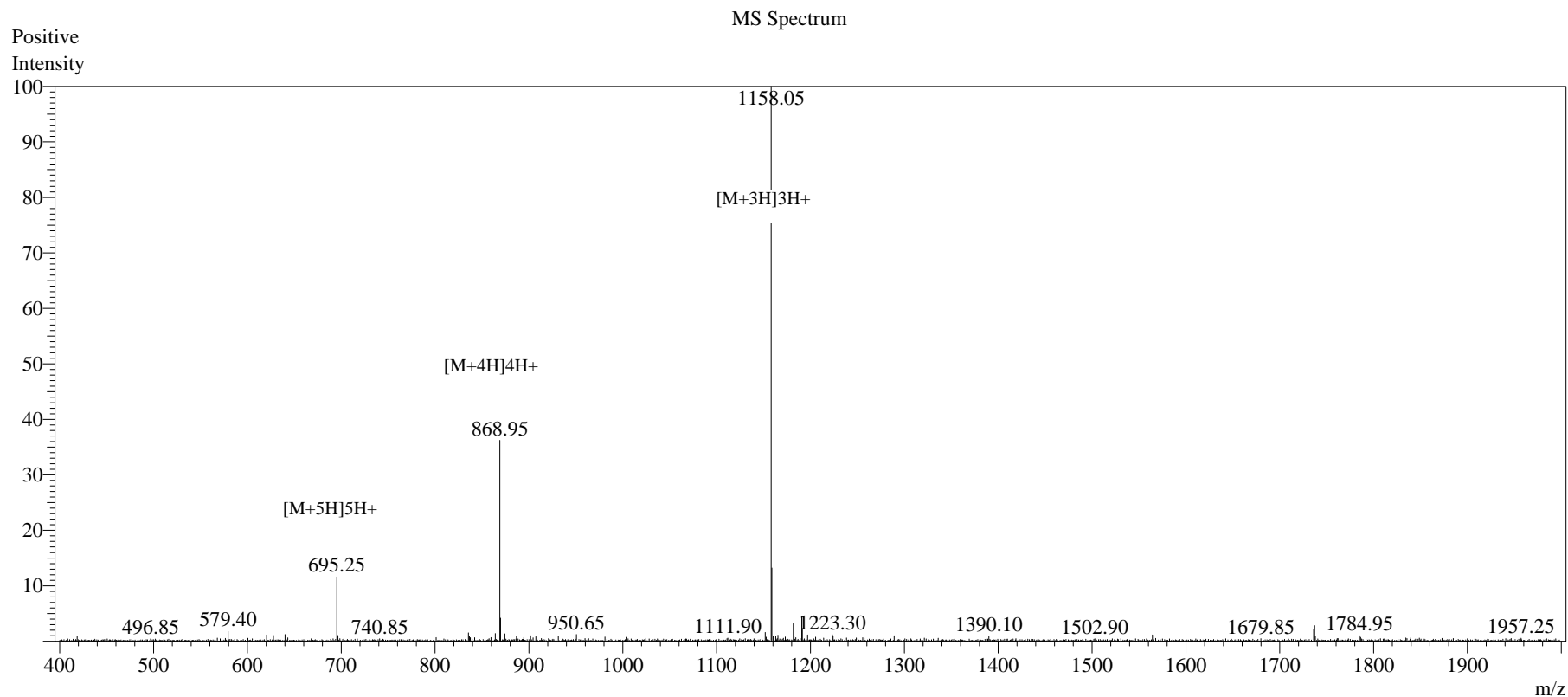
Chromatogram



Peak Table

Detector A 214nm

Peak#	Ret. Time	Area	Height	Area%
1	14.493	6175	1100	0.079
2	15.079	71313	7715	0.912
3	15.260	7441764	996395	95.157
4	15.479	259473	27519	3.318
5	16.641	27894	2451	0.357
6	17.024	3709	594	0.047
7	17.304	10197	1651	0.130
Total		7820524	1037425	100.000



Sample Information

Dissolution method	:15% ACN+85% H ₂ O	Interface	:ESI	Prerod Bias	:+4.5kv
Date Acquired	:2022/07/29 11:06:14	Nebulizing Gas Flow	:1.50L/min	Detector	:-0.2kv
Injection Volume	:0.2ul	CDL Temp	:250C	T.Flow	:0.2ml/min
Block Temp	:200	CDL Volt	:0v	B.conc	:50% H ₂ O/50% MEOH

Order ID	:GTA34368-10
Name	:Growth hormone-releasing hormone related peptide, GHRH-RP
Sequence	:HLDRVWAEDKQMALESILQGPRMKLSAEA
Lot.No	:GTA34368-10-0712
Theoretical	:3470.95
Observed	:3471.15