

## CERTIFICATE OF ANALYSIS

<b>Product Name</b>	Glucagon like peptide 2 Cat.#: 301069
<b>Lot No.</b>	MTFA30634-1026
<b>Sequence</b>	HADGSFSDEMNTILDNLAARDFINWLIQTKITD
<b>Dissolution condition</b>	2%NH3.H2O+18%ACN+80%H2O
<b>Length</b>	33AA
<b>Modification</b>	N/A
<b>Molecular Weight (MW)</b>	3766.10
<b>Storage</b>	-20°C

<b>Test Items</b>	<b>Specifications</b>	<b>Results</b>
<b>MW by MS</b>	3766.35	Conforms
<b>Purity by HPLC</b>	>95%	95.016%
<b>Peptide Content</b>	N/A	N/A
<b>Moisture content</b>	N/A	N/A
<b>Acetic acid content</b>	N/A	N/A
<b>Appearance</b>	White to off-white lyophilized powder	Conforms
<b>Quantity</b>	10mg	5.0mg*2

NovoPro Bioscience Inc. (hereafter NovoPro) warrants material of said quality at the time of sale. It is the sole responsibility of the customers to determine the adequacy of all materials for any intended or specific purpose or use. NovoPro's sole obligation is to replace the material up to the extent of the purchase price. This warranty applies only to products in original packaging and does not apply to a product which has been tampered with or altered in any way in or which has been misused or damaged by accident or negligence. All claims must be received writing (by fax or email) within 30 days from date when product arrive at the destination city and failure to do so shall constitute a waiver by customers for any and all such claims.

Certified by:



Nov/21/2023

Quality Assurance Department

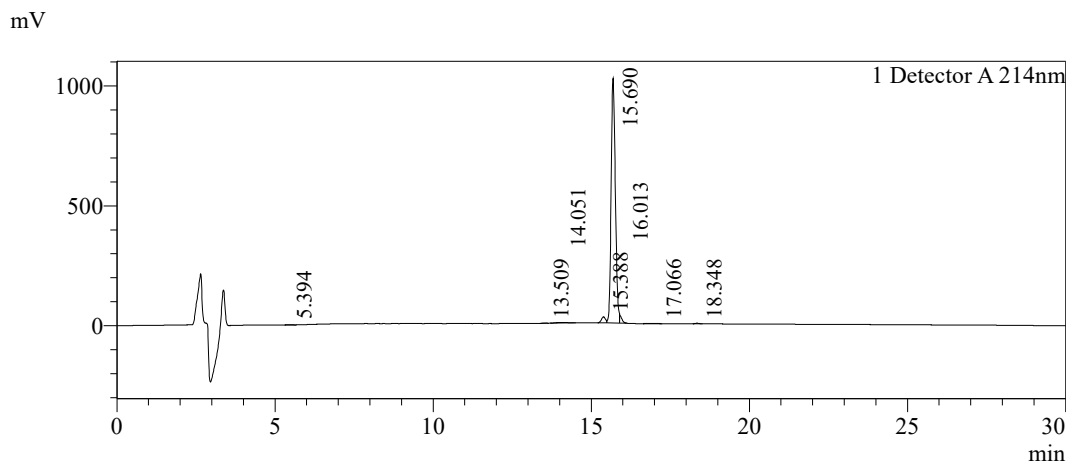


### Sample Information

Order ID :MTFA30634  
 Name :Glucagon like peptide 2 [3-33]  
 Sequence :HADGSFSDEMNTILDNLAARDFINWLIQTKITD  
 Lot. No :MTFA30634-1026  
 Pump A :0.1%Trifluoroacetic in 100% water  
 Pump B :0.1%Trifluoroacetic in 100% acetonitrile  
 Total Flow :1ml/min  
 Wavelength :214nm  
 Analytical column type :Phenomenex Luna® 5 µm C18 (2) (4.6\*250mm\*5 µm)  
 Dissolution method :2%NH3.H2O+18%ACN+80%H2O  
 Inj. Volume : 20ul

Time	Module	Action	Value
0.01	Pumps	B.Conc	35
30.00	Pumps	B.Conc	65
33.00	Pumps	B.Conc	100
38.00	Pumps	B.Conc	100
40.00	Pumps	B.Conc	35
50.00	Controller	Stop	

### Chromatogram

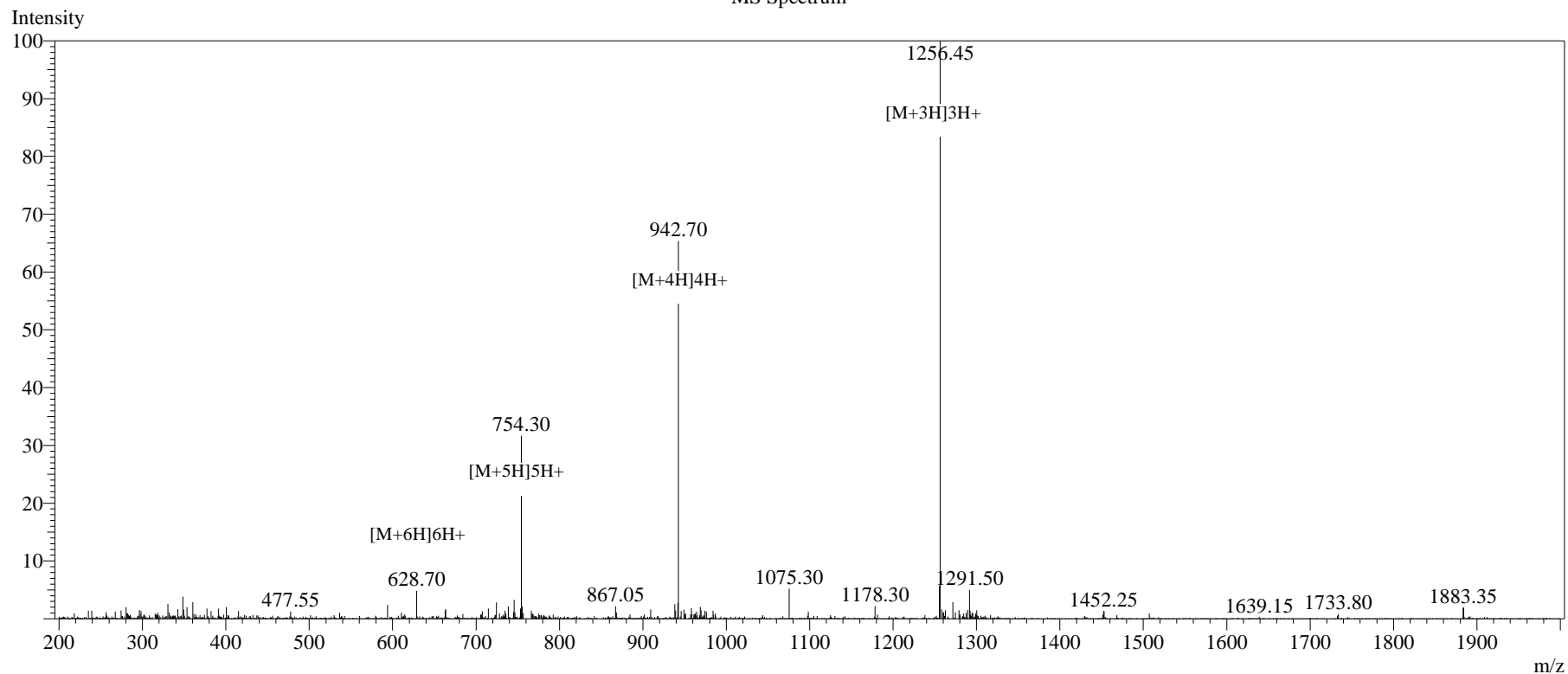


### Peak Table

Detector A 214nm

Peak#	Ret. Time	Area	Height	Area%
1	5.394	12890	1492	0.129
2	13.509	11103	1422	0.111
3	14.051	58172	2647	0.584
4	15.388	218596	24644	2.194
5	15.690	9466294	1019298	95.016
6	16.013	159368	7548	1.600
7	17.066	21042	1315	0.211
8	18.348	15338	2066	0.154
Total		9962803	1060432	100.000

### MS Spectrum



### Sample Information

Dissolution method	:2%NH <sub>3</sub> .H <sub>2</sub> O+18%ACN+80%H <sub>2</sub> O	Interface	:ESI	Prerod Bias	:+4.5kv
Date Acquired	:2023/11/16 10:03:36	Nebulizing Gas Flow	:1.50L/min	Detector	:-0.2kv
Injection Volume	:0.2ul	CDL Temp	:250°C	T.Flow	:0.2ml/min
Block Temp	:200	CDL Volt	:0v	B.conc	:50% H <sub>2</sub> O/50% MEOH

Order ID	:MTFA30634
Name	:Glucagon like peptide 2 [3-33]
Sequence	:HADGFSDEMNTILDNLAARDFINWLIQTKITD
Lot.No	:MTFA30634-1026
Theoretical	:3766.10
Observed	:3766.35