

CERTIFICATE OF ANALYSIS

Product Name	Glucagon-Like Peptide I (7-36), amide, Cat.#: 300478 (TFA removed)
Lot No.	MTFA30574-2-1008
Sequence	HAEGTFTSDVSSYLEGQAAKEFIAWLVKGR-NH2(AcetateSalt)
Dissolution condition	100%H2O
Length	30AA
Modification	Acetate Salts
Molecular Weight (MW)	3297.62
Storage	-20°C

Test Items	Specifications	Results
MW by MS	3298.20	Conforms
Purity by HPLC	>95%	98.241%
Peptide Content	N/A	N/A
Moisture content	N/A	N/A
Acetic acid content	N/A	N/A
Appearance	White to off-white lyophilized powder	Conforms
Quantity	10mg	5.0mg*2

NovoPro Bioscience Inc. (hereafter NovoPro) warrants material of said quality at the time of sale. It is the sole responsibility of the customers to determine the adequacy of all materials for any intended or specific purpose or use. NovoPro's sole obligation is to replace the material up to the extent of the purchase price. This warranty applies only to products in original packaging and does not apply to a product which has been tampered with or altered in any way in or which has been misused or damaged by accident or negligence. All claims must be received writing (by fax or email) within 30 days from date when product arrive at the destination city and failure to do so shall constitute a waiver by customers for any and all such claims.

Certified by:



Quality Assurance Department

Nov/02/2023

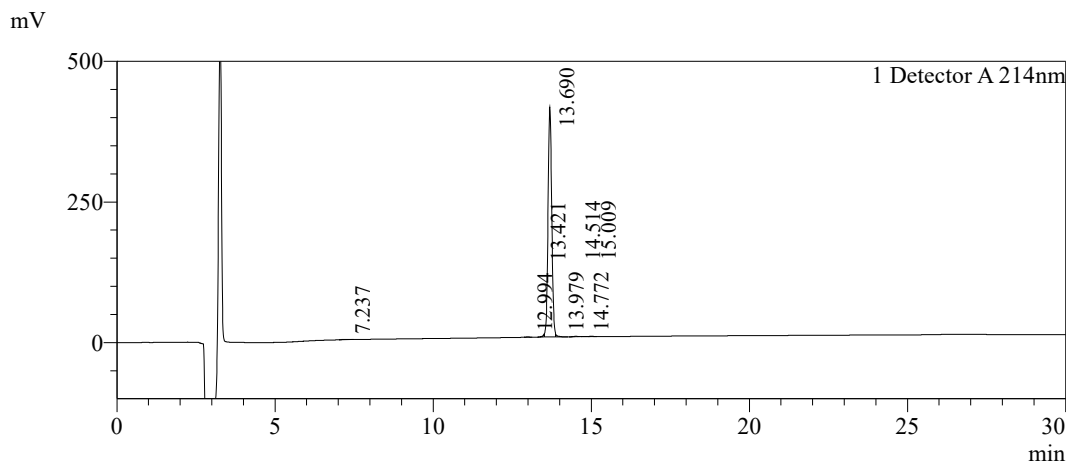


Sample Information

Order ID :MTFA30574-2
 Name :Glucagon-Like Peptide I(7-36)
 Sequence :HAEGTFTSDVSSYLEGQAAKEFIAWLVKGR-NH2 (Acetate Salt)
 Lot. No :MTFA30574-2-1008
 Pump A :0.1%Trifluoroacetic in 100% water
 Pump B :0.1%Trifluoroacetic in 100% acetonitrile
 Total Flow :1ml/min
 Wavelength :214nm
 Analytical column type :Phenomenex Luna® 5 µm C18(2) (4.6*250mm*5 µm)
 Dissolution method :100%H2O
 Inj. Volume : 30ul

Time	Module	Action	Value
0.01	Pumps	B.Conc	30
30.00	Pumps	B.Conc	60
33.00	Pumps	B.Conc	100
38.00	Pumps	B.Conc	100
40.00	Pumps	B.Conc	30
50.00	Controller	Stop	

Chromatogram

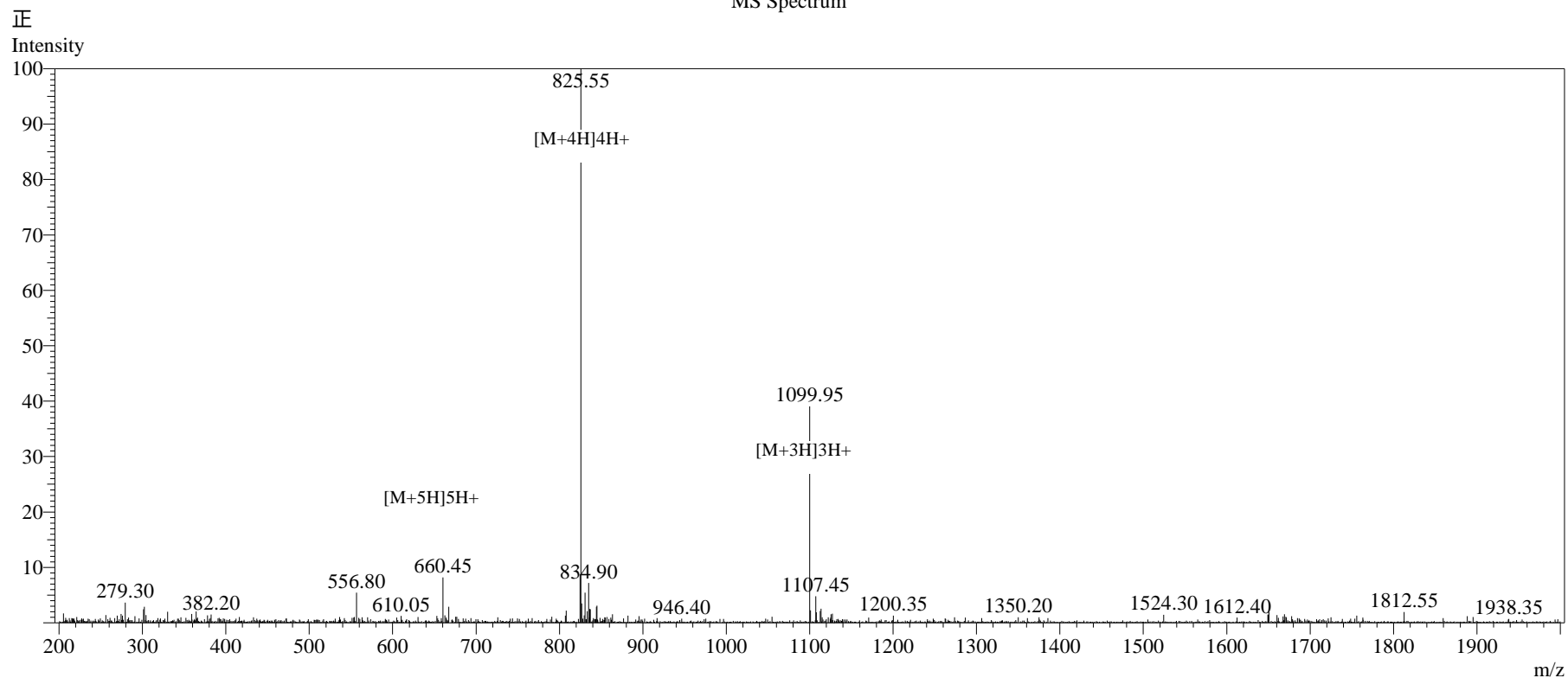


Peak Table

Detector A 214nm

Peak#	Ret. Time	Area	Height	Area%
1	7.237	5313	391	0.156
2	12.994	4574	692	0.135
3	13.421	18020	783	0.531
4	13.690	3335696	409057	98.241
5	13.979	17626	1092	0.519
6	14.514	7406	897	0.218
7	14.772	1072	159	0.032
8	15.009	5701	839	0.168
Total		3395408	413910	100.000

MS Spectrum



Sample Information

Dissolution method	:15% ACN+85% H ₂ O	Interface	:ESI	Prerod Bias	:+4.5kv
Date Acquired	:2023/10/13 11:12:06	Nebulizing Gas Flow	:1.50L/min	Detector	:-0.2kv
Injection Volume	:0.2ul	CDL Temp	:250°C	T.Flow	:0.2ml/min
Block Temp	:200	CDL Volt	:0v	B.conc	:50% H ₂ O/50% MEOH

Order ID	:MTFA30574-2
Name	:Glucagon-Like Peptide I(7-36)
Sequence	:HAEGTFTSDVSSYLEGQAAKEFIAWLVKGR-NH ₂ (Acetate Salt)
Lot.No	:MTFA30574-2-1008
Theoretical	:3297.62
Observed	:3298.20