

CERTIFICATE OF ANALYSIS

Product Name	Diuretic hormone Dippu-DH31 peptide, Cat.#: 312411
Lot No.	MTFA30110-0425
Sequence	GLDLGLSRGFSGSQAAKHLMGLAAANYAGGP-NH2
Dissolution condition	100%H2O
Length	31AA
Modification	N/A
Molecular Weight (MW)	2987.32
Storage	-20°C

Test Items	Specifications	Results
MW by MS	2987.55	Conforms
Purity by HPLC	>95%	95.044%
Peptide Content	N/A	N/A
Moisture content	N/A	N/A
Acetic acid content	N/A	N/A
Appearance	White to off-white lyophilized powder	Conforms
Quantity	10mg	5.0mg*2

NovoPro Bioscience Inc. (hereafter NovoPro) warrants material of said quality at the time of sale. It is the sole responsibility of the customers to determine the adequacy of all materials for any intended or specific purpose or use. NovoPro's sole obligation is to replace the material up to the extent of the purchase price. This warranty applies only to products in original packaging and does not apply to a product which has been tampered with or altered in any way in or which has been misused or damaged by accident or negligence. All claims must be received writing (by fax or email) within 30 days from date when product arrive at the destination city and failure to do so shall constitute a waiver by customers for any and all such claims.

Certified by:



Quality Assurance Department

May/31/2023

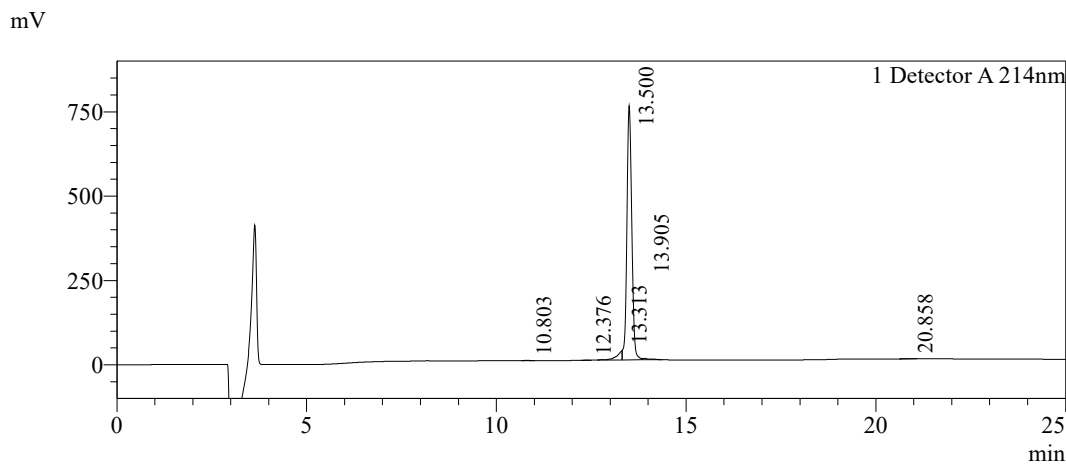


Sample Information

Order ID :MTFA30110
 Name :Diuretic hormone Dippu-DH31 peptide
 Sequence :GLDLGLSRGFSGSQAAKHLMGLAAANYAGGP-NH2
 Lot. No :MTFA30110-0425
 Pump A :0.1%Trifluoroacetic in 100% water
 Pump B :0.1%Trifluoroacetic in 100% acetonitrile
 Total Flow :1ml/min
 Wavelength :214nm
 Analytical column type :Inertsil ODS-SP(4.6*250mm*5um)
 Dissolution method :100%H2O
 Inj. Volume : 25ul

Time	Module	Action	Value
0.01	Pumps	B.Conc	25
25.00	Pumps	B.Conc	50
33.00	Pumps	B.Conc	100
38.00	Pumps	B.Conc	100
40.00	Pumps	B.Conc	25
50.00	Controller	Stop	

Chromatogram



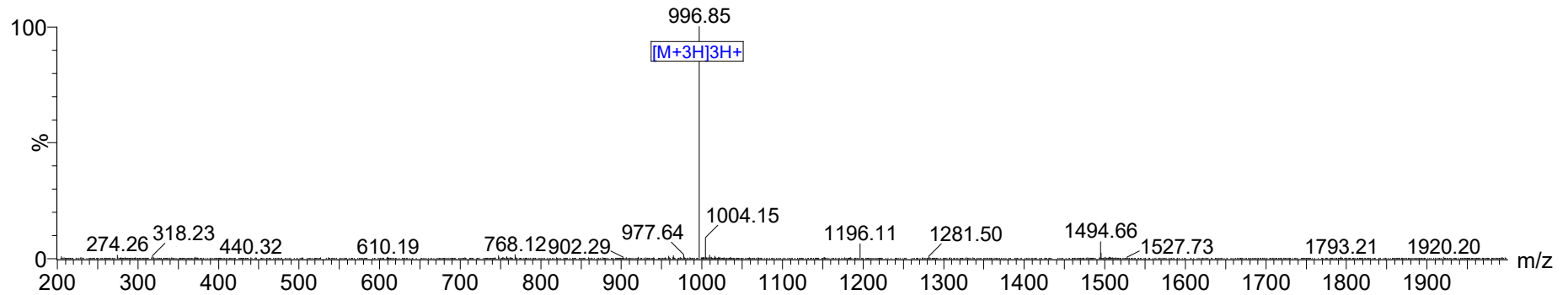
Peak Table

Detector A 214nm

Peak#	Ret. Time	Area	Height	Area%
1	10.803	9371	1173	0.134
2	12.376	6532	821	0.093
3	13.313	262024	27413	3.735
4	13.500	6668285	753005	95.044
5	13.905	62413	4264	0.890
6	20.858	7387	629	0.105
Total		7016012	787306	100.000

MS Spectrum

Positive
Intensity



Dissolution method	:15%ACN+85%H2O	Interface	:ESI	Prerod Bias	:+4.5kv
Date Acquired	:5/31/2023 6:48:37	Nebulizing Gas Flow	:1.50L/min	Detector	:-0.2kv
Injection Volume	:0.2ul	CDL Temp	:250C	T.Flow	:0.2ml/min
Block Temp	:200	CDL Volt	:0v	B.conc	:50%H2O/50%MEOH

Order ID : MFA30110
 Name : Dippu-DH31
 Sequence : GLDLGLSRGFSQAAKHLMGLAAANYAGGP-NH2
 Lot.No : MFA30110-0425
 Theoretical : 2987.32
 Observed : 2987.55