


CERTIFICATE OF ANALYSIS

Product Name	Development regulating peptide Hym-249, Cat.#: 309895
Lot No.	MTFA30481-3-0915
Sequence	KPIPGLW-NH2
Dissolution condition	100%H2O
Length	7AA
Modification	N/A
Molecular Weight (MW)	809.01
Storage	-20°C

Test Items	Specifications	Results
MW by MS	808.70	Conforms
Purity by HPLC	>95%	99.065%
Peptide Content	N/A	N/A
Moisture content	N/A	N/A
Acetic acid content	N/A	N/A
Appearance	White to off-white lyophilized powder	Conforms
Quantity	20mg	5.0mg*4

NovoPro Bioscience Inc. (hereafter NovoPro) warrants material of said quality at the time of sale. It is the sole responsibility of the customers to determine the adequacy of all materials for any intended or specific purpose or use. NovoPro's sole obligation is to replace the material up to the extent of the purchase price. This warranty applies only to products in original packaging and does not apply to a product which has been tampered with or altered in any way in or which has been misused or damaged by accident or negligence. All claims must be received writing (by fax or email) within 30 days from date when product arrive at the destination city and failure to do so shall constitute a waiver by customers for any and all such claims.

Certified by:



Quality Assurance Department

Oct/19//2023

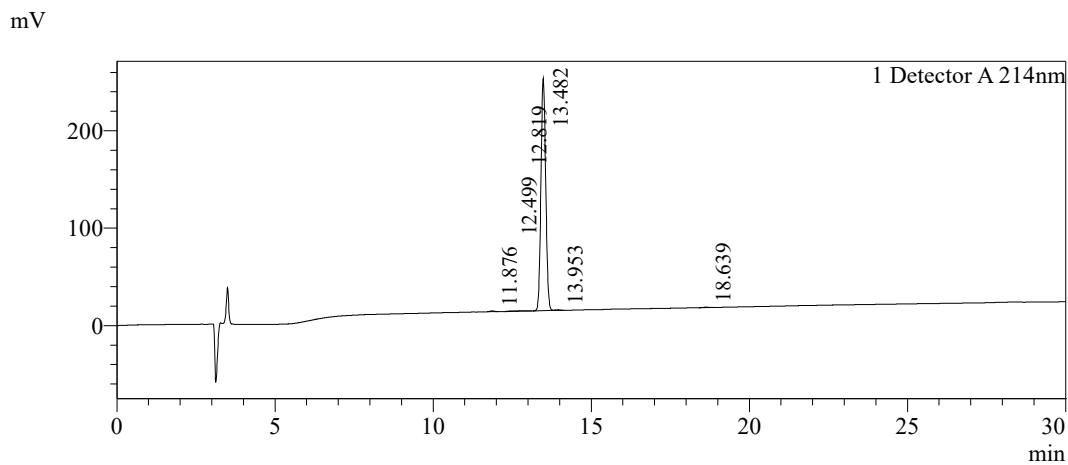


Sample Information

Order ID :MTFA30481-3
 Name :Development regulating peptide Hym-249
 Sequence :KPIPGLW-NH2
 Lot. No :MTFA30481-3-0915
 Pump A :0.1%Trifluoroacetic in 100% water
 Pump B :0.1%Trifluoroacetic in 100% acetonitrile
 Total Flow :1ml/min
 Wavelength :214nm
 Analytical column type :Phenomenex Luna® 5 µm C18(2) (4.6*250mm*5 µm)
 Dissolution method :100%H2O
 Inj. Volume : 5ul

Time	Module	Action	Value
0.01	Pumps	B.Conc	20
30.00	Pumps	B.Conc	50
33.00	Pumps	B.Conc	100
38.00	Pumps	B.Conc	100
40.00	Pumps	B.Conc	20
50.00	Controller	Stop	

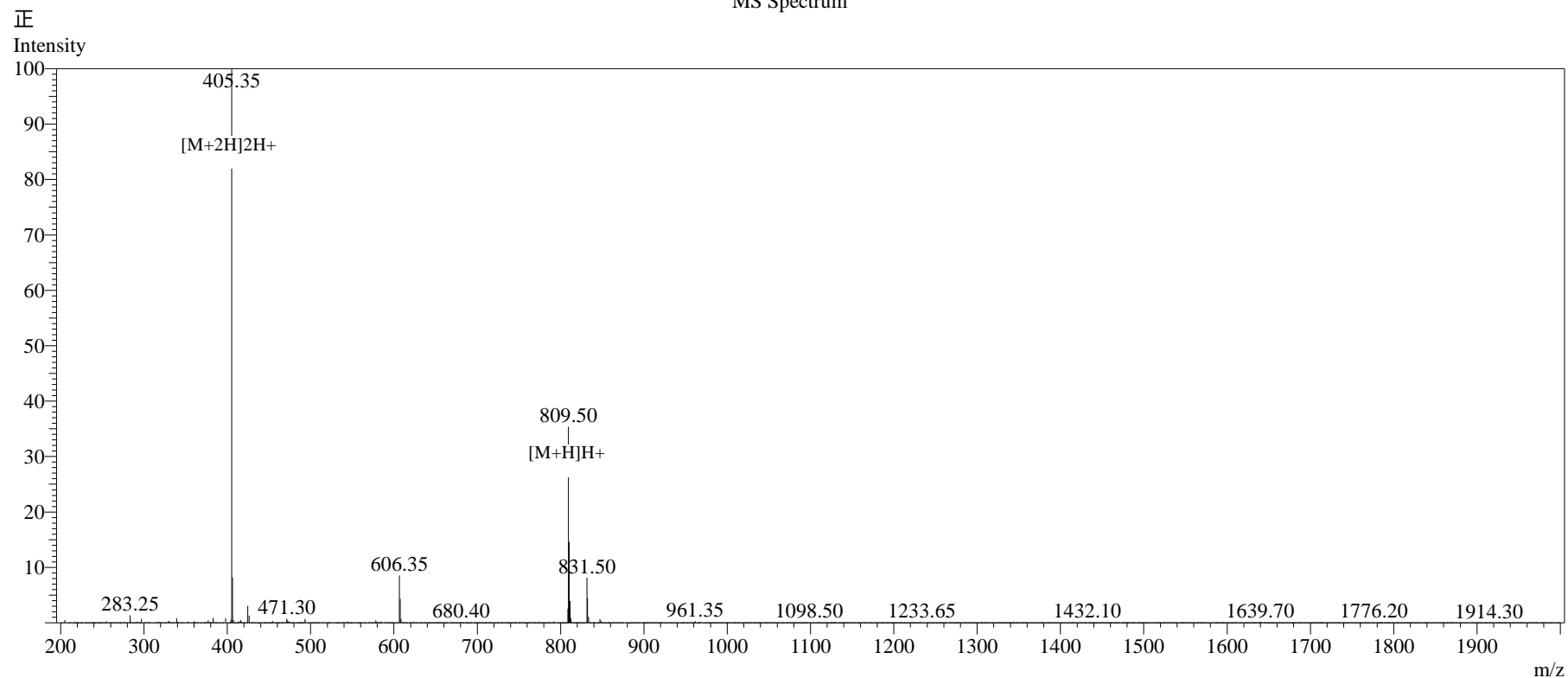
Chromatogram



Peak Table

Detector A 214nm				
Peak#	Ret. Time	Area	Height	Area%
1	11.876	6240	791	0.248
2	12.499	5233	475	0.208
3	12.819	2700	222	0.107
4	13.482	2497608	238594	99.065
5	13.953	5350	552	0.212
6	18.639	4039	322	0.160
Total		2521171	240956	100.000

MS Spectrum



Sample Information

Dissolution method	:15%ACN+85%H2O	Interface	:ESI	Prerod Bias	:+4.5kv
Date Acquired	:2023/10/18 13:45:59	Nebulizing Gas Flow	:1.50L/min	Detector	:-0.2kv
Injection Volume	:0.2ul	CDL Temp	:250°C	T.Flow	:0.2ml/min
Block Temp	:200	CDL Volt	:0v	B.conc	:50% H2O/50% MEOH

Order ID	:MTFA30481-3
Name	:Development regulating peptide Hym-249
Sequence	:KPIPGLW-NH2
Lot.No	:MTFA30481-3-0915
Theoretical	:809.01
Observed	:808.70