

CERTIFICATE OF ANALYSIS

Product Name	Crustacean Cardioactive Peptide, CCAP, Cat.#: 307571
Lot No.	MTFA30562-1007
Sequence	PFC*NAFTGC*-NH ₂ (Acetate Salt)
Dissolution condition	100%H ₂ O
Length	9AA
Modification	acetate salt; disulfide bond: Cys3-Cys9
Molecular Weight (MW)	956.11
Storage	-20°C

Test Items	Specifications	Results
MW by MS	955.45	Conforms
Purity by HPLC	>95%	98.542%
Peptide Content	N/A	N/A
Moisture content	N/A	N/A
Acetic acid content	N/A	N/A
Appearance	White to off-white lyophilized powder	Conforms
Quantity	10mg	5.0mg*2

NovoPro Bioscience Inc. (hereafter NovoPro) warrants material of said quality at the time of sale. It is the sole responsibility of the customers to determine the adequacy of all materials for any intended or specific purpose or use. NovoPro's sole obligation is to replace the material up to the extent of the purchase price. This warranty applies only to products in original packaging and does not apply to a product which has been tampered with or altered in any way in or which has been misused or damaged by accident or negligence. All claims must be received writing (by fax or email) within 30 days from date when product arrive at the destination city and failure to do so shall constitute a waiver by customers for any and all such claims.

Certified by:



Quality Assurance Department

Oct/30/2023

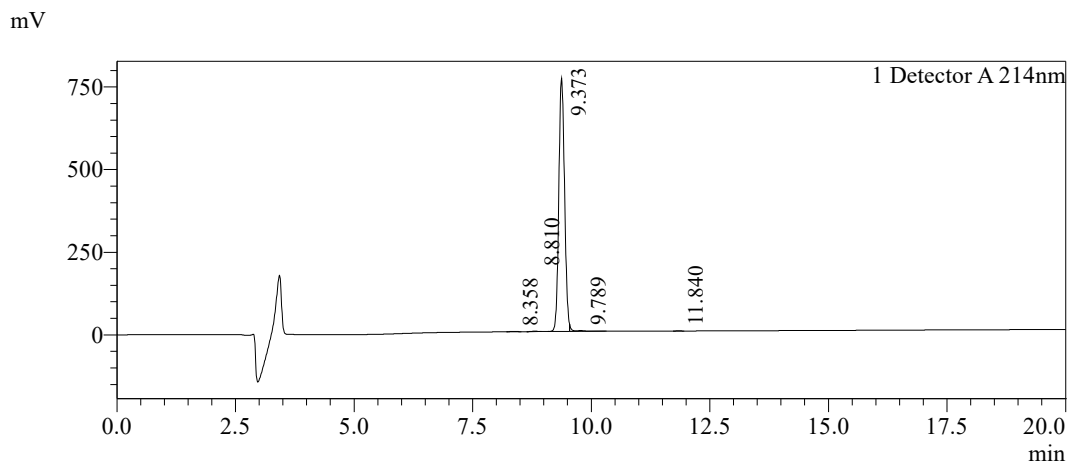


Sample Information

Order ID : MTF30562
 Name : Crustacean Cardioactive Peptide, CCAP
 Sequence : PFC*NAFTGC*-NH₂ (Acetate Salt)
 Lot. No : MTF30562-1007
 Pump A : 0.1% Trifluoroacetic in 100% water
 Pump B : 0.1% Trifluoroacetic in 100% acetonitrile
 Total Flow : 1ml/min
 Wavelength : 214nm
 Analytical column type : Phenomenex Luna® 5 µm C18 (2) (4.6*250mm*5 µm)
 Dissolution method : 100% H₂O
 Inj. Volume : 15ul

Time	Module	Action	Value
0.01	Pumps	B.Conc	25
20.00	Pumps	B.Conc	45
33.00	Pumps	B.Conc	100
38.00	Pumps	B.Conc	100
40.00	Pumps	B.Conc	25
50.00	Controller	Stop	

Chromatogram

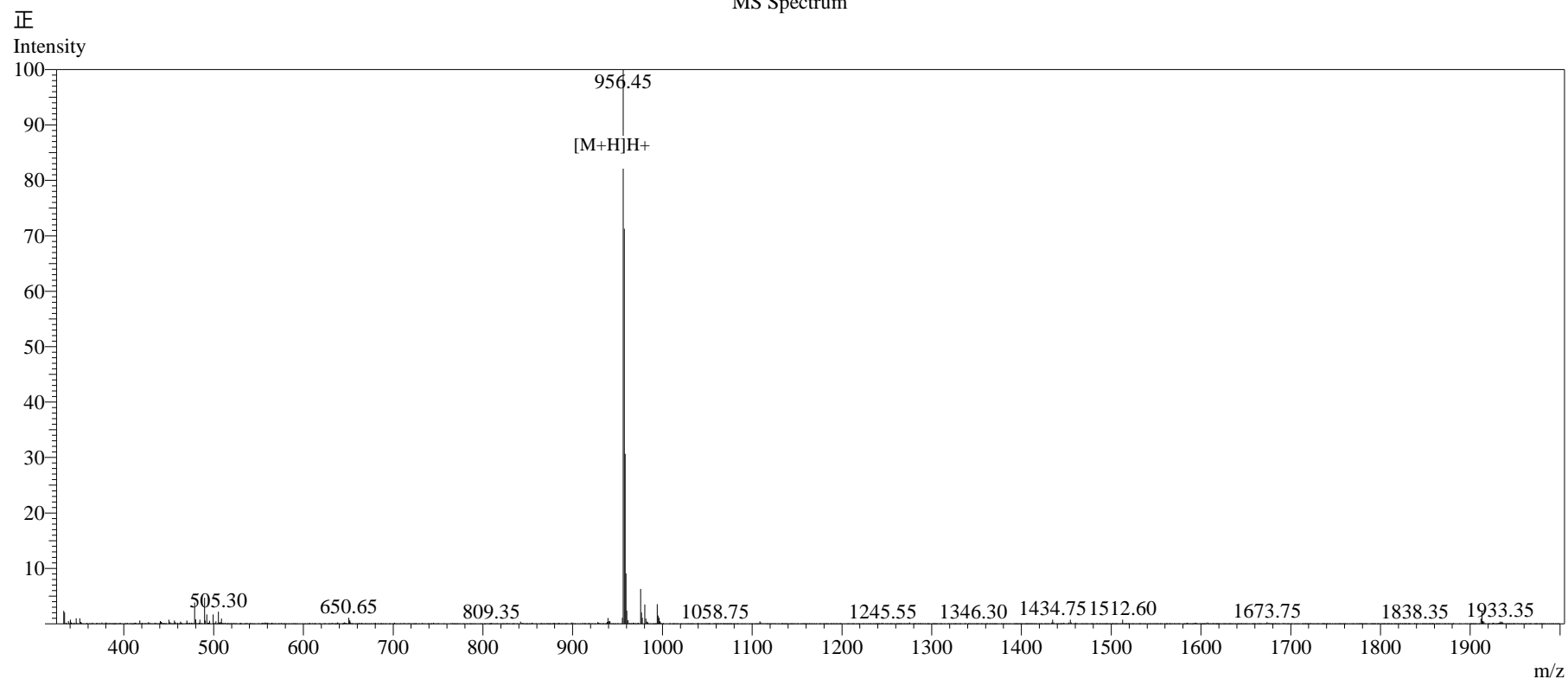


Peak Table

Detector A 214nm

Peak#	Ret. Time	Area	Height	Area%
1	8.358	9841	1213	0.150
2	8.810	10083	1306	0.154
3	9.373	6443703	765715	98.542
4	9.789	72685	2138	1.112
5	11.840	2724	416	0.042
Total		6539037	770789	100.000

MS Spectrum



Sample Information

Dissolution method	:15% ACN+85% H ₂ O	Interface	:ESI	Prerod Bias	:+4.5kv
Date Acquired	:2023/10/15 13:11:50	Nebulizing Gas Flow	:1.50L/min	Detector	:-0.2kv
Injection Volume	:0.2ul	CDL Temp	:250°C	T.Flow	:0.2ml/min
Block Temp	:200	CDL Volt	:0v	B.conc	:50% H ₂ O/50% MEOH

Order ID	:MTFA30562
Name	:Crustacean Cardioactive Peptide, CCAP
Sequence	:PFC*NAFTGC*-NH ₂ (Acetate Salt)
Lot.No	:MTFA30562-1007
Theoretical	:956.11
Observed	:955.45