

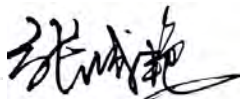
CERTIFICATE OF ANALYSIS

Product Name	Copeptin (human) peptide, Cat.#: 305394 (TFA removed)
Lot No.	MTFA30502-0920
Sequence	ASDRSNATQLDGPAGALLLRLVQLAGAPEPFEPAPDAY
Dissolution condition	100%H ₂ O
Length	39AA
Modification	N/A
Molecular Weight (MW)	4021.35
Storage	-20°C

Test Items	Specifications	Results
MW by MS	4020.90	Conforms
Purity by HPLC	>95%	96.180%
Peptide Content	N/A	N/A
Moisture content	N/A	N/A
Acetic acid content	N/A	N/A
Appearance	White to off-white lyophilized powder	Conforms
Quantity	10mg	5.0mg*2

NovoPro Bioscience Inc. (hereafter NovoPro) warrants material of said quality at the time of sale. It is the sole responsibility of the customers to determine the adequacy of all materials for any intended or specific purpose or use. NovoPro's sole obligation is to replace the material up to the extent of the purchase price. This warranty applies only to products in original packaging and does not apply to a product which has been tampered with or altered in any way in or which has been misused or damaged by accident or negligence. All claims must be received in writing (by fax or email) within 30 days from date when product arrive at the destination city and failure to do so shall constitute a waiver by customers for any and all such claims.

Certified by:



Quality Assurance Department

OCT/10/2023

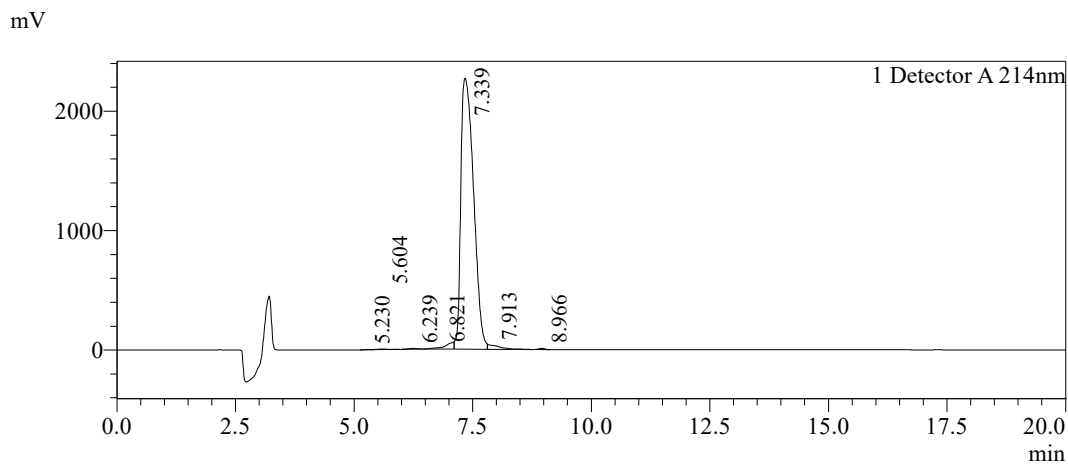


Sample Information

Order ID :MFA30502
 Name :Copeptin (human) peptide
 Sequence :ASDRSNATQLDGPAGALLRLVQLAGAPEPFEPAPDAY
 Lot. No :MFA30502-0920
 Pump A :0.1%Trifluoroacetic in 100% water
 Pump B :0.1%Trifluoroacetic in 100% acetonitrile
 Total Flow :1ml/min
 Wavelength :214nm
 Analytical column type :Phenomenex Luna® 5 µm C18(2) (4.6*250mm*5 µm)
 Dissolution method :100%H2O
 Inj. Volume : 40ul

Time	Module	Action	Value
0.01	Pumps	B.Conc	40
20.00	Pumps	B.Conc	60
33.00	Pumps	B.Conc	100
38.00	Pumps	B.Conc	100
40.00	Pumps	B.Conc	40
50.00	Controller	Stop	

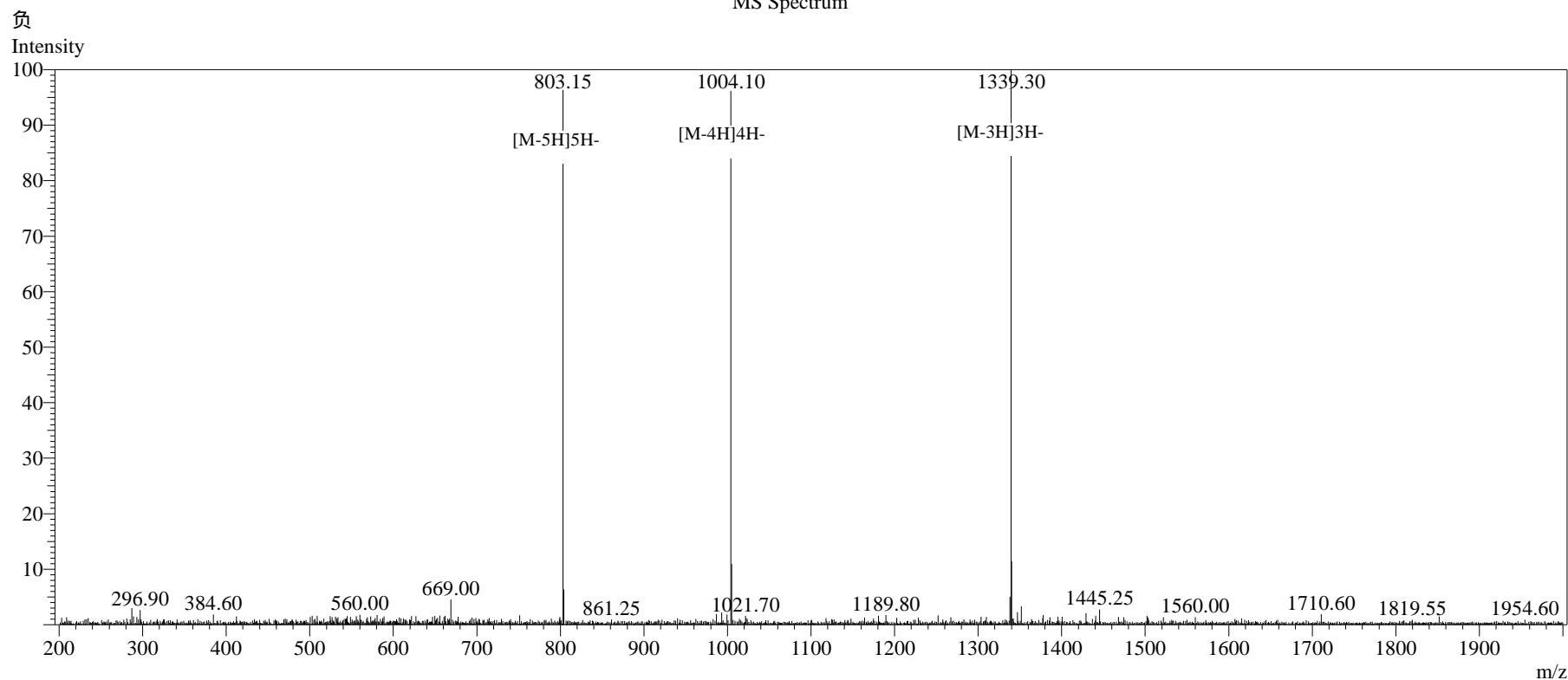
Chromatogram



Peak Table

Peak#	Ret. Time	Area	Height	Area%
1	5.230	4471	827	0.010
2	5.604	78881	4819	0.179
3	6.239	73423	5504	0.166
4	6.821	753356	12502	1.708
5	7.339	42421441	2268199	96.180
6	7.913	692249	32869	1.570
7	8.966	82387	10545	0.187
Total		44106208	2335265	100.000

MS Spectrum



Sample Information

Dissolution method	:15% ACN+85% H ₂ O	Interface	:ESI	Prerod Bias	:+4.5kv
Date Acquired	:2023/10/11 13:44:38	Nebulizing Gas Flow	:1.50L/min	Detector	:-0.2kv
Injection Volume	:0.2ul	CDL Temp	:250°C	T.Flow	:0.2ml/min
Block Temp	:200	CDL Volt	:0v	B.conc	:50% H ₂ O/50% MEOH

Order ID	:MTFA30502
Name	:Copeptin (human) peptide
Sequence	:ASDRSNATQLDGPAGALLRLVQLAGAPEPFEPQPDAY
Lot.No	:MTFA30502-0920
Theoretical	:4021.35
Observed	:4020.90