

**CERTIFICATE OF ANALYSIS**

<b>Product Name</b>	Apelin-12 peptide, Cat.#: 314392
<b>Lot No.</b>	MTFA30565-1007
<b>Sequence</b>	RPRLSHKGPMMPF
<b>Dissolution condition</b>	100%H <sub>2</sub> O
<b>Length</b>	12AA
<b>Modification</b>	N/A
<b>Molecular Weight (MW)</b>	1422.69
<b>Storage</b>	-20°C

<b>Test Items</b>	<b>Specifications</b>	<b>Results</b>
<b>MW by MS</b>	1422.75	Conforms
<b>Purity by HPLC</b>	>95%	95.467%
<b>Peptide Content</b>	N/A	N/A
<b>Moisture content</b>	N/A	N/A
<b>Acetic acid content</b>	N/A	N/A
<b>Appearance</b>	White to off-white lyophilized powder	Conforms
<b>Quantity</b>	10mg	5.0mg*2

NovoPro Bioscience Inc. (hereafter NovoPro) warrants material of said quality at the time of sale. It is the sole responsibility of the customers to determine the adequacy of all materials for any intended or specific purpose or use. NovoPro's sole obligation is to replace the material up to the extent of the purchase price. This warranty applies only to products in original packaging and does not apply to a product which has been tampered with or altered in any way in or which has been misused or damaged by accident or negligence. All claims must be received writing (by fax or email) within 30 days from date when product arrive at the destination city and failure to do so shall constitute a waiver by customers for any and all such claims.

Certified by:



Quality Assurance Department

Oct/27//2023

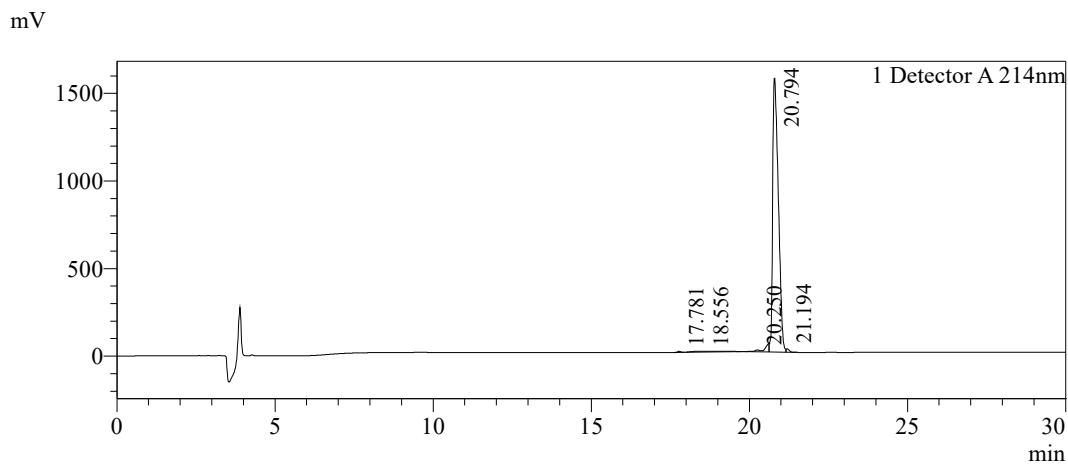


Sample Information

Order ID :MTFA30565  
 Name :Apelin-12 peptide  
 Sequence :RPRLSHKGMPF  
 Lot. No :MTFA30565-1007  
 Pump A :0.1%Trifluoroacetic in 100% water  
 Pump B :0.1%Trifluoroacetic in 100% acetonitrile  
 Total Flow :1ml/min  
 Wavelength :214nm  
 Analytical column type :Phenomenex Luna® 5 µm C18(2) (4.6\*250mm\*5 µm)  
 Dissolution method :100%H2O  
 Inj. Volume : 15ul

Time	Module	Action	Value
0.01	Pumps	B.Conc	10
30.00	Pumps	B.Conc	40
33.00	Pumps	B.Conc	100
38.00	Pumps	B.Conc	100
40.00	Pumps	B.Conc	10
50.00	Controller	Stop	

Chromatogram

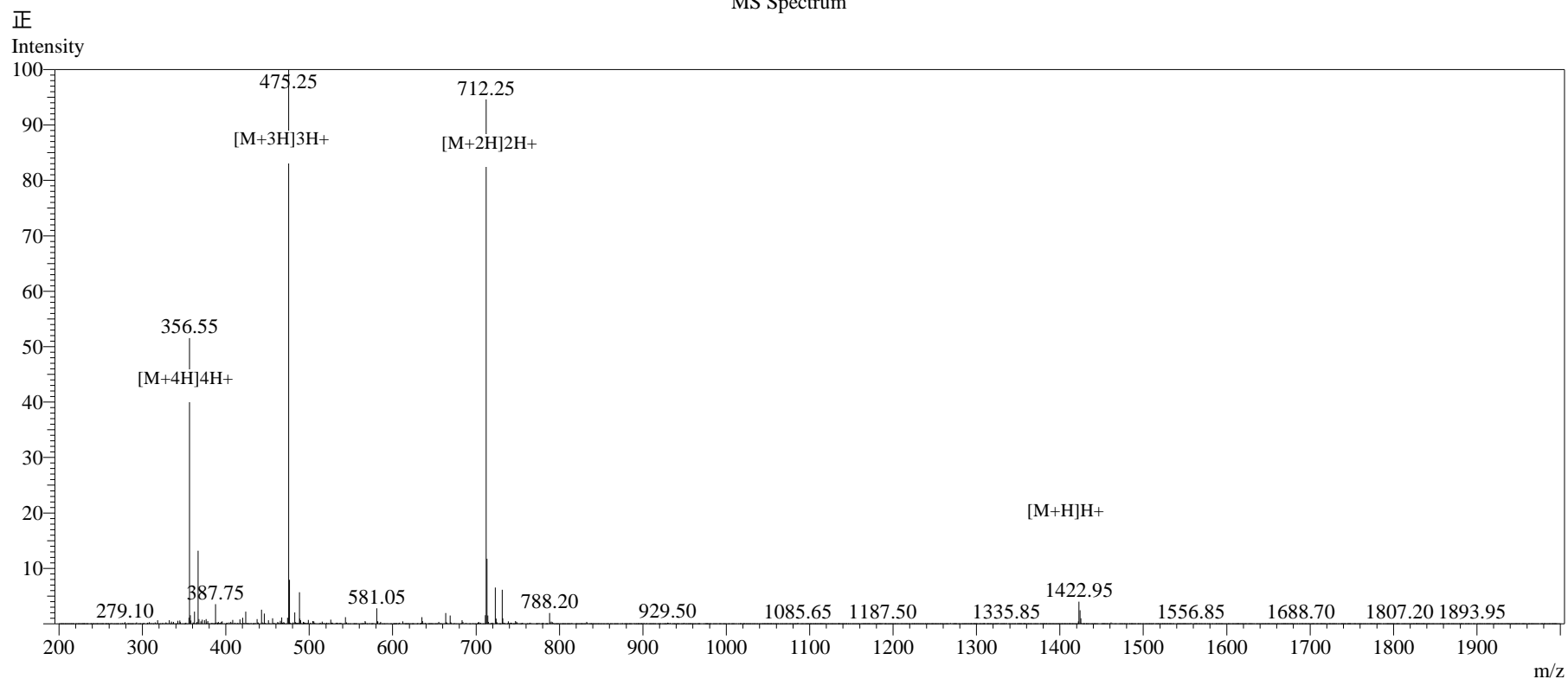


Peak Table

Detector A 214nm

Peak#	Ret. Time	Area	Height	Area%
1	17.781	44149	6473	0.214
2	18.556	272716	4150	1.324
3	20.250	491325	9825	2.386
4	20.794	19659730	1562639	95.467
5	21.194	125338	19243	0.609
Total		20593258	1602330	100.000

### MS Spectrum



### Sample Information

Dissolution method :15% ACN+85% H<sub>2</sub>O  
 Date Acquired :2023/10/17 10:39:02  
 Injection Volume :0.2ul  
 Block Temp :200

Interface :ESI  
 Nebulizing Gas Flow :1.50L/min  
 CDL Temp :250°C  
 CDL Volt :0v

Prerod Bias :+4.5kv  
 Detector :-0.2kv  
 T.Flow :0.2ml/min  
 B.conc :50% H<sub>2</sub>O/50% MEOH

Order ID :MTFA30565  
 Name :Apelin-12 peptide  
 Sequence :RPRLSHKGPMPF  
 Lot.No :MTFA30565-1007  
 Theoretical :1422.69  
 Observed :1422.75