


CERTIFICATE OF ANALYSIS

Product Name	Adropin (34-76) peptide, Cat.#: 314322
Lot No.	GTA33968-0124
Sequence	C*HSRSADVDSLSESSPNSSPGPC*PEKAPPPQKPSHEGSYLLQP
Dissolution condition	100%H ₂ O
Length	43AA
Modification	Disulfide Bridge: 1-23
Molecular Weight (MW)	4499.77
Storage	-20°C

Test Items	Specifications	Results
MW by MS	4500.30	Conforms
Purity by HPLC	>95%	95.490%
Peptide Content	N/A	N/A
Moisture content	N/A	N/A
Acetic acid content	N/A	N/A
Appearance	White to off-white lyophilized powder	Conforms
Quantity	10mg	5.0mg*2

NovoPro Bioscience Inc. (hereafter NovoPro) warrants material of said quality at the time of sale. It is the sole responsibility of the customers to determine the adequacy of all materials for any intended or specific purpose or use. NovoPro's sole obligation is to replace the material up to the extent of the purchase price. This warranty applies only to products in original packaging and does not apply to a product which has been tampered with or altered in any way in or which has been misused or damaged by accident or negligence. All claims must be received writing (by fax or email) within 30 days from date when product arrive at the destination city and failure to do so shall constitute a waiver by customers for any and all such claims.

Certified by:



Quality Assurance Department

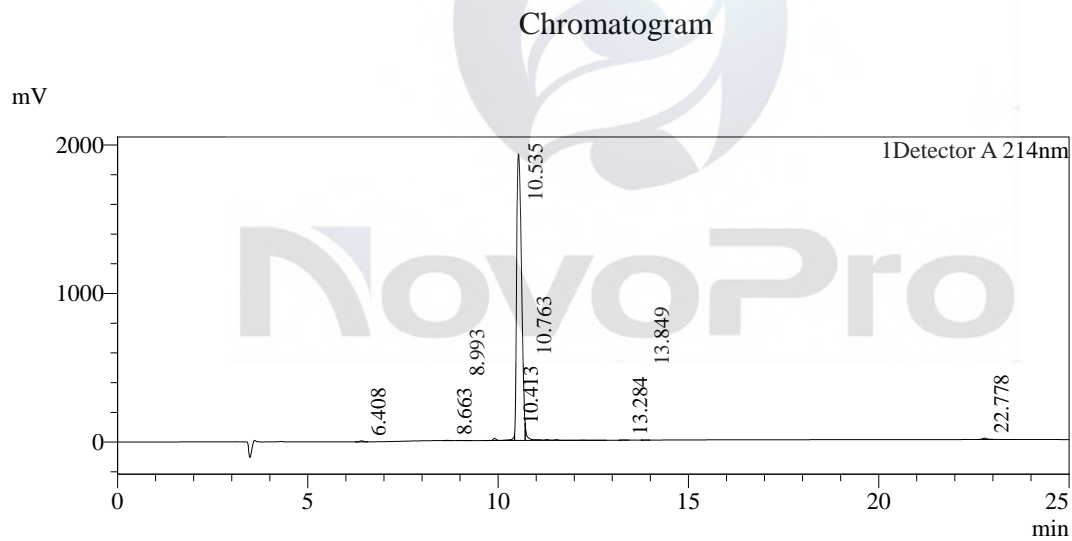
Feb/20/2022



Sample Information

Order ID :GTA33968
 Name :Adropin (34-76)
 Sequence :C*HRSADVDSLSESSPNSSPGPC*PEKAPPPQKPSHEGSYLLQP
 Lot. No :GTA33968-0124
 Pump A :0.1% Trifluoroacetic in 100% water
 Pump B :0.1% Trifluoroacetic in 100% acetonitrile
 Total Flow :1ml/min
 Wavelength :214nm
 Analytical column type :YMC-Triart C18(4.6*250mm*5um)
 Dissolution method :100% H2O
 Inj. Volume : 25ul

Time	Module	Action	Value
0.01	Pumps	B.Conc	20
25.00	Pumps	B.Conc	45
33.00	Pumps	B.Conc	100
38.00	Pumps	B.Conc	100
40.00	Pumps	B.Conc	20
50.00	Controller	Stop	

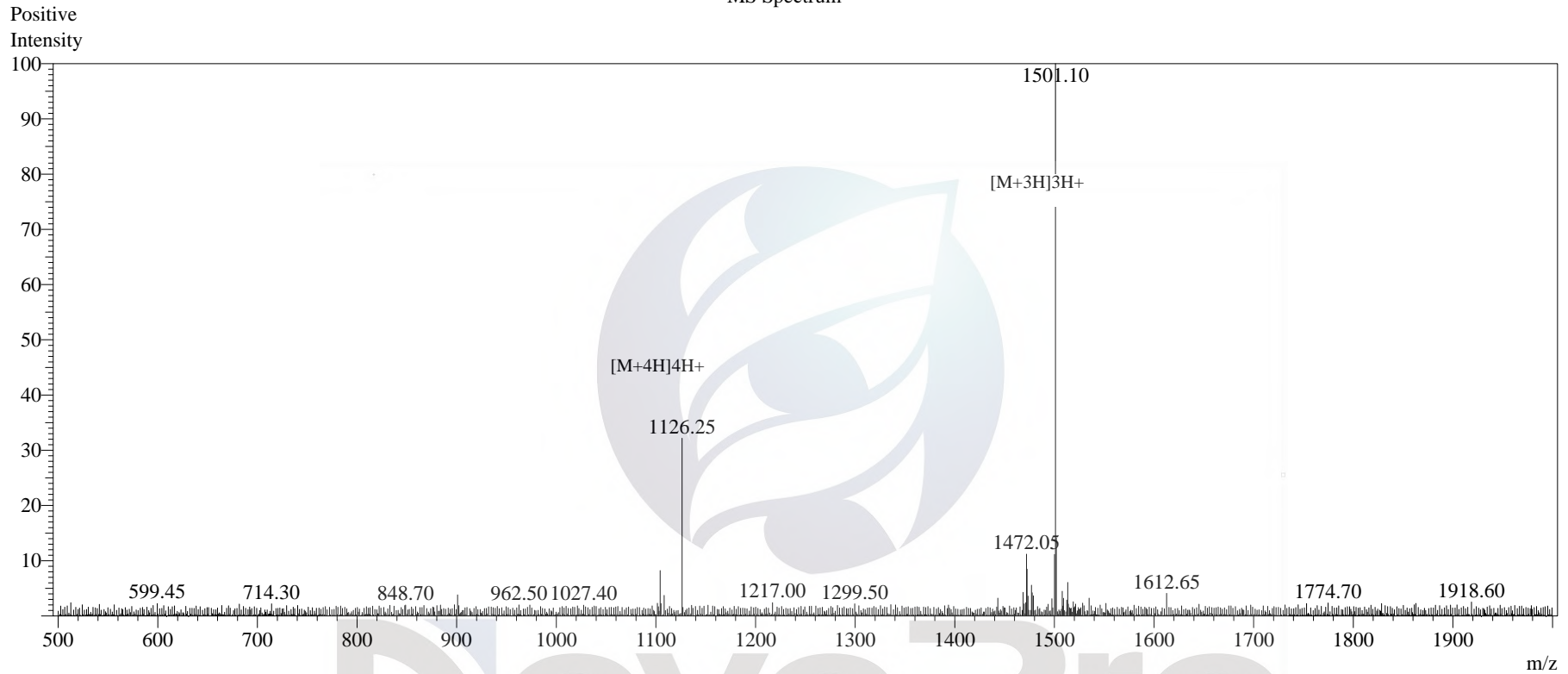


Peak Table

Detector A 214nm

Peak#	Ret. Time	Area	Height	Area%
1	6.408	43566	6515	0.245
2	8.663	9270	1515	0.052
3	8.993	4197	571	0.024
4	10.413	209415	17243	1.175
5	10.535	17013551	1928872	95.490
6	10.763	448293	31144	2.516
7	13.284	8507	1488	0.048
8	13.849	1025	175	0.006
9	22.778	79230	9254	0.445
Total		17817053	1996777	100.000

MS Spectrum



Sample Information

Dissolution method	:5% HAC+8% ACN+87% H2O	Interface	:ESI	Prerod Bias	:+4.5kv
Date Acquired	:2022/02/17 16:43:07	Nebulizing Gas Flow	:1.50L/min	Detector	:-0.2kv
Injection Volume	:0.2ul	CDL Temp	:250C	T.Flow	:0.2ml/min
Block Temp	:200	CDL Volt	:0v	B.conc	:50%H2O/50% MEOH

Order ID	:GTA33968
Name	:Adropin 34-76
Sequence	:C*HSRSADVDSLSESSPNSSPGPC*PEKAPPPQKPSHEGSYLLQP
Lot.No	:GTA33968-0124
Theoretical	:4499.77
Observed	:4500.30