

CERTIFICATE OF ANALYSIS

Product Name	7B2 C-terminal peptide (5-13), Cat.#: 316324 (TFA removed)
Lot No.	MTFA30912-1-0115
Sequence	FSEEEKEPE (Acetate Salt)
Dissolution condition	100%H ₂ O
Length	9AA
Modification	acetate salt
Molecular Weight (MW)	1123.12
Storage	-20°C

Test Items	Specifications	Results
MW by MS	1123.10	Conforms
Purity by HPLC	>95%	98.802%
Peptide content	N/A	N/A
Moisture content	N/A	N/A
Acetic acid content	N/A	N/A
Appearance	White to off-white lyophilized powder	Conforms
Quantity	10mg	5.0mg*2

NovoPro Bioscience Inc. (hereafter NovoPro) warrants material of said quality at the time of sale. It is the sole responsibility of the customers to determine the adequacy of all materials for any intended or specific purpose or use. NovoPro's sole obligation is to replace the material up to the extent of the purchase price. This warranty applies only to products in original packaging and does not apply to a product which has been tampered with or altered in any way in or which has been misused or damaged by accident or negligence. All claims must be received writing (by fax or email) within 30 days from date when product arrive at the destination city and failure to do so shall constitute a waiver by customers for any and all such claims.

Certified by:



Jan/31/2024

Quality Assurance Department

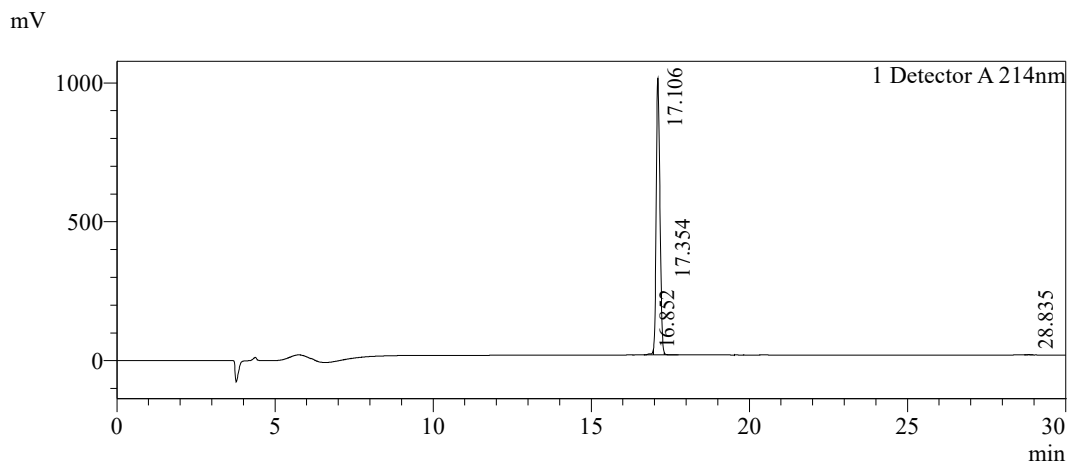


Sample Information

Order ID	:MTFA30912-1
Name	:7B2 C-terminal peptide (5-13)
Sequence	:FSEEEKEPE (Acetate Salt)
Lot. No	:MTFA30912-1-0115
Pump A	:0.1%Trifluoroacetic in 100% water
Pump B	:0.1%Trifluoroacetic in 100% acetonitrile
Total Flow	:1ml/min
Wavelength	:214nm
Analytical column type	:Phenomenex Luna® 5 µm C18 (2) (4.6*250mm*5 µm)
Dissolution method	:100%H2O
Inj. Volume	: 20ul

Time	Module	Action	Value
0.01	Pumps	B.Conc	5
30.00	Pumps	B.Conc	35
33.00	Pumps	B.Conc	100
38.00	Pumps	B.Conc	100
40.00	Pumps	B.Conc	5
50.00	Controller	Stop	

Chromatogram

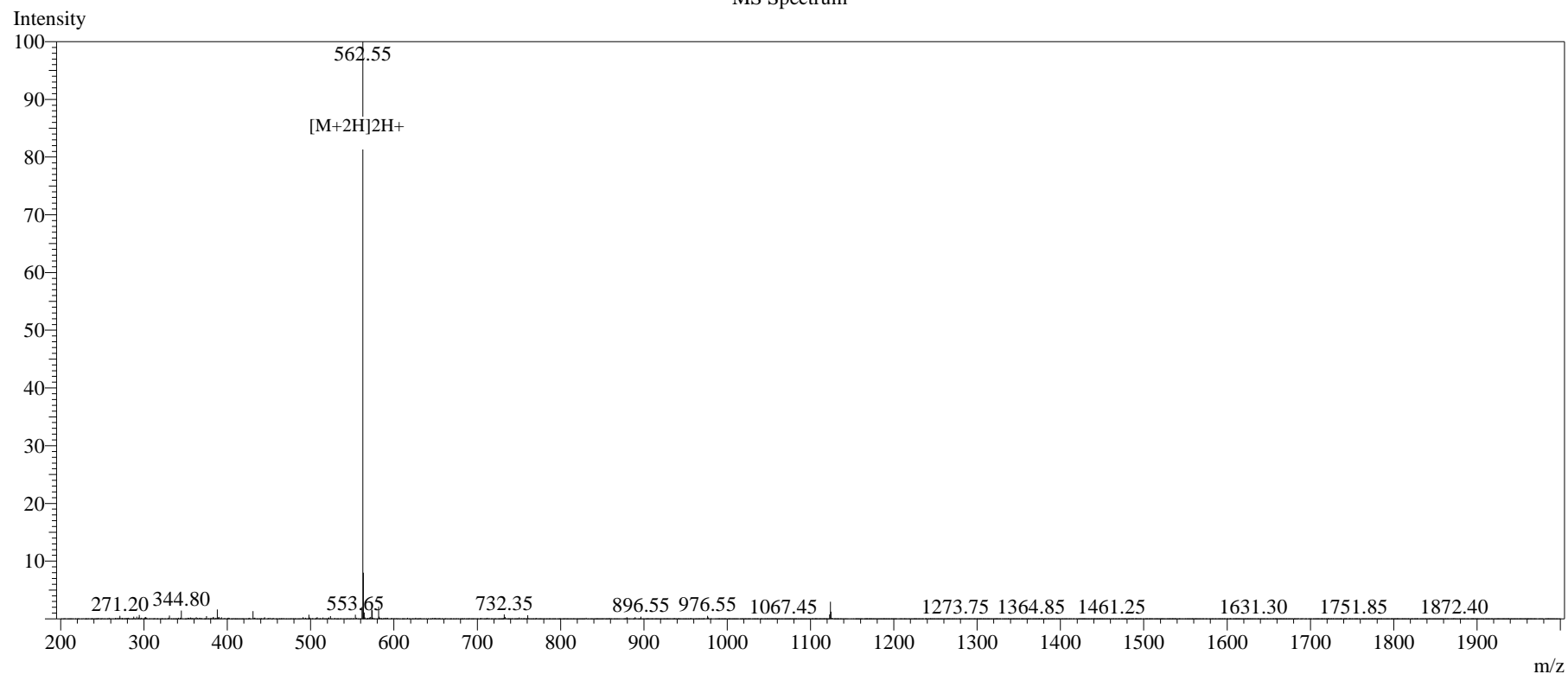


Peak Table

Detector A 214nm

Peak#	Ret. Time	Area	Height	Area%
1	16.852	72647	3985	0.875
2	17.106	8201031	995873	98.802
3	17.354	19951	2261	0.240
4	28.835	6866	1037	0.083
Total		8300495	1003156	100.000

MS Spectrum



Sample Information

Dissolution method	:15% ACN+85% H ₂ O	Interface	:ESI	Prerod Bias	:+4.5kv
Date Acquired	:2024/01/23 13:52:10	Nebulizing Gas Flow	:1.50L/min	Detector	:-0.2kv
Injection Volume	:0.2ul	CDL Temp	:250°C	T.Flow	:0.2ml/min
Block Temp	:200	CDL Volt	:0v	B.conc	:50% H ₂ O/50% MEOH

Order ID	:MTFA30912-1
Name	:7B2 C-terminal peptide (5-13)
Sequence	:FSEEEKEPE (Acetate Salt)
Lot.No	:MTFA30912-1-0115
Theoretical	:1123.12
Observed	:1123.10