

# Tuberin-Specific antibody



Catalog Number: 116485

## Product name

Tuberin-Specific antibody

IHC: 1:20-1:200

IF: 1:10-1:100

## Specificity

Human, Mouse, Rat; other species not tested.

## Antibody description

Tuberin-Specific Rabbit Polyclonal antibody.  
Positive IHC detected in human kidney tissue.  
Positive IF detected in Hela cells. Positive WB detected in mouse lung tissue, mouse liver tissue, mouse skeletal muscle tissue, NIH/3T3 cells.  
Observed molecular weight by Western-blot: 170-180 kDa

## Preparation

This antibody was obtained by immunization of Peptide (Accession Number: NM\_000548).  
Purification method: Antigen affinity purified.

## Formulation

PBS with 0.02% sodium azide and 50% glycerol  
pH 7.3.

## Storage

Store at -20°C. DO NOT ALIQUOT

## Clonality

Polyclonal

## Ig Type

Rabbit IgG

## Applications

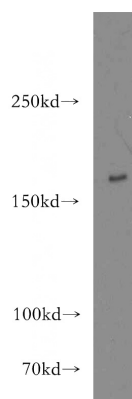
ELISA, WB, IF, IHC

## Dilutions

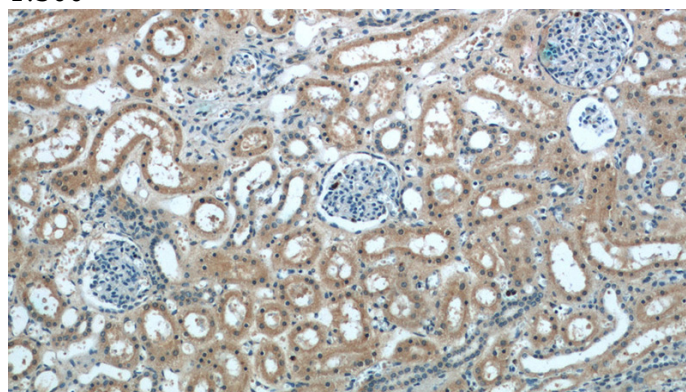
Recommended Dilution:

WB: 1:200-1:2000

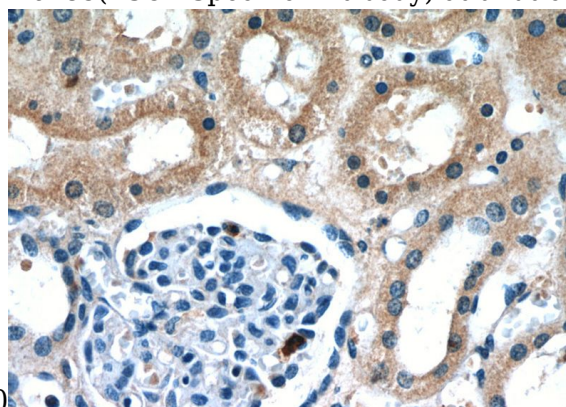
## Validations



mouse lung tissue were subjected to SDS PAGE followed by western blot with Catalog No:116485(TSC2-Specific antibody) at dilution of 1:300



Immunohistochemistry of paraffin-embedded human kidney slide using Catalog No:116485(TSC2-Specific Antibody) at dilution of



1:50

Immunohistochemistry of paraffin-embedded

# Tuberin-Specific antibody

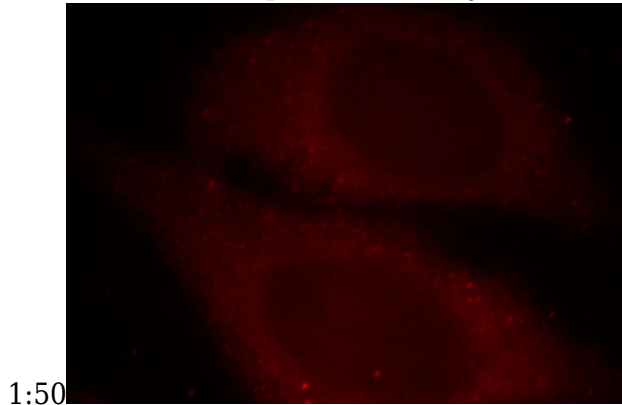


Catalog Number: 116485

---

human kidney slide using Catalog  
No:116485(TSC2-Specific Antibody) at dilution of

Immunofluorescent analysis of Hela cells, using  
TSC2 antibody Catalog No:116485 at 1:25 dilution  
and Rhodamine-labeled goat anti-rabbit IgG (red).



1:50